



Websters
estate agents

Luther Road, Teddington, TW11 8PU

End of terrace 4 double bedroom Victorian house in a popular residential cul-de-sac location only 0.2 miles from Teddington town centre shops, cafes and restaurants and just 0.4 miles from Teddington mainline train station.

Extended, loft converted and refurbished to an impressive standard to offer 1475 sq ft of well proportioned living space over 3 floors with high specification fixtures, fittings and floorings, double glazed windows and doors and modern contemporary decor throughout.

Entrance hallway leads into the dining room with open access to the bay fronted living room, a w.c and pocket sliding doors leading into the stunning kitchen/family room at the rear. This light filled room has a stylish bespoke integrated kitchen, feature brick wall and space for seating/dining. Folding doors open onto the landscaped garden with a patio, astroturf lawn, shed storage and gated side access with covered storage.

On the first floor are 2 double bedrooms with built in storage and the luxury family bathroom. Stairs lead up to 2 more double bedrooms, the master with an en-suite shower room, built in wardrobes and eaves storage

Situated only 150 metres from St Mary's and St Peter's, 0.7 miles from Stanley Primary and just 0.6 miles from beautiful Bushy Park.

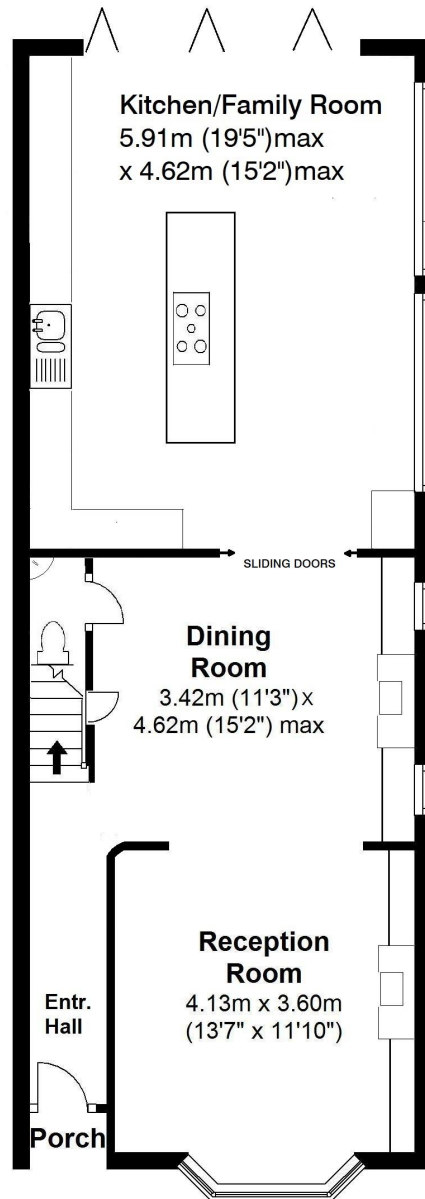
EPC Rating D

- End of Terrace 4 Bedroom Home
- 1475 Sq Ft of Living Space over 3 Floors
- High Specification Throughout
- Open Plan Living Room and Kitchen/Family Room
- Popular Cul-de-Sac Location
- 0.4 Miles from Teddington Station
- Close to Popular Schools

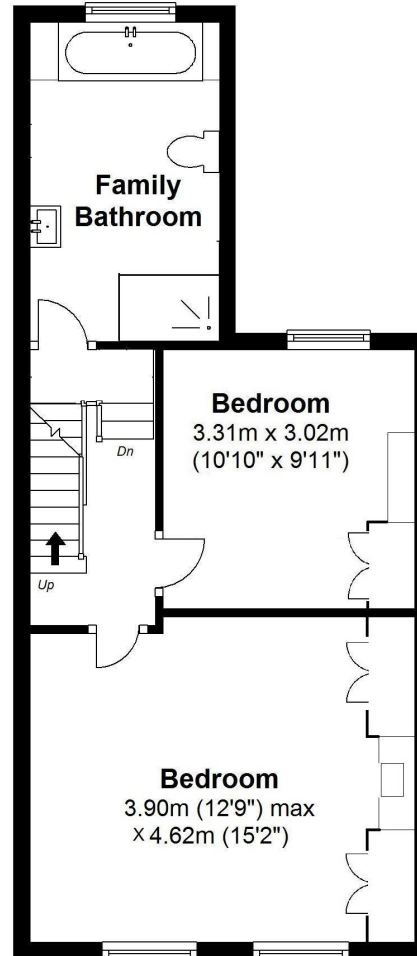


Luther Road, Teddington

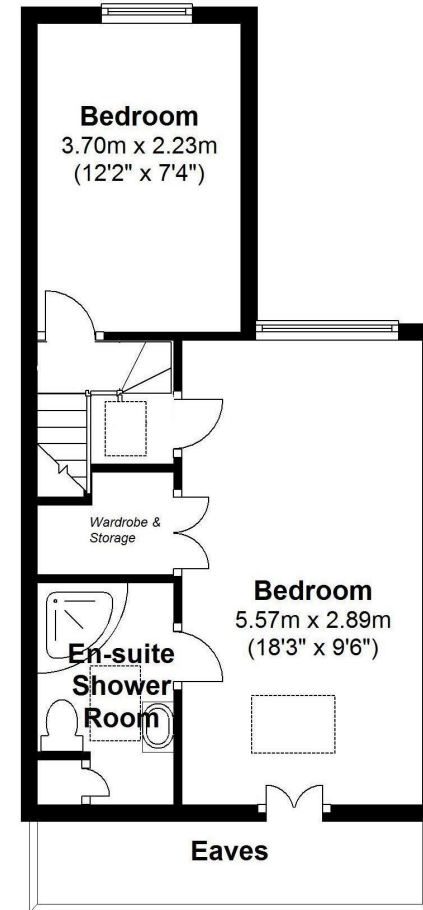
Total Floor Area approx = 1475 Sq Ft (137 sq.m)



Ground Floor



First Floor



Second Floor

a Websters Estate Agents 36 Broad Street, Teddington, Middlesex TW11 8QY

t 020 8614 6000

e sales@mywebsters.co.uk w mywebsters.co.uk

Disclaimer

These particulars, whilst believed to be accurate are set out as a general outline only for guidance and do not constitute any part of an offer or contract. Intending purchasers should not rely on them as statements of representation of fact, but must satisfy themselves by inspection or otherwise as to their accuracy. We have not carried out a detailed survey nor tested the services, appliances and specific fittings. Room sizes should not be relied upon for carpets and furnishings. The measurements given are approximate. No person in this firm's employment has the authority to make or give any representation or warranty in respect of the property.

