



Fieldend, Strawberry Hill, TW1 4TF

End of Terrace 3 bedroom family home in the highly regarded Fieldend Eric Lyons Span Housing Development. Located 0.3 miles from local shops, 0.6 miles from Strawberry Hill village and train station and within 0.8 miles of Teddington town centre shops, cafes and restaurants.

In need of complete modernisation/updating and currently offering 1176 sq ft of living space over 2 floors with potential to extend, reconfigure the layout and create a bespoke family home (subject to Planning Permission and Building Regulations)

Front porch opens into the dual aspect living room with a study area and access to a bathroom and the fitted kitchen. Doors open to the dining room at the rear (currently used as a bedroom) and the low maintenance walled garden with gated side access. On the first floor are 3 bedrooms, the bathroom and a separate w.c.

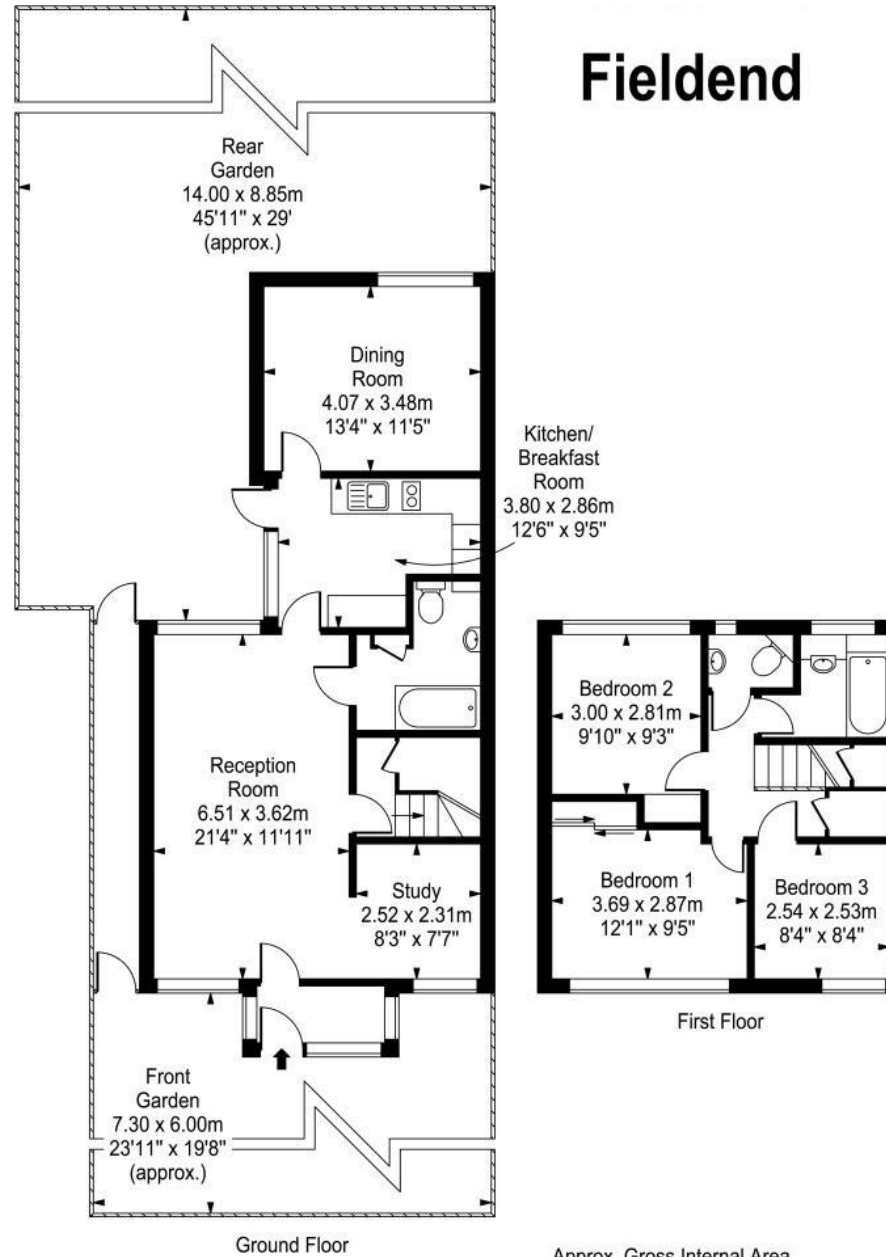
Set within 5 acres of stunning landscaped communal grounds with residents parking and private garages. The 51 Fieldend houses were built 1960– 61, and picked up a number of awards, including a Civic Trust Award and a Housing Gold Award and were more recently given 'Conservation Area' status in recognition of the developments architectural merit and excellent landscaping.

Situated 0.2 miles from Newland House School, 0.6 miles from Stanley and St Mary's & St Peter's Schools and 0.9 miles from Teddington Footbridge across the River Thames with towpath walks towards Richmond and Hampton Court Palace. EPC Rating D

- End of Terrace Eric Lyons Span House
- Popular Fieldend Development
- 3 Bedrooms and 2 Bathrooms
- Stunning 5 Acre Development
- In Need of Modernisation
- Residents Parking and Private Garage
- 0.6 Miles from Strawberry Hill Station
- Close to Popular Schools



Fieldend



Approx. Gross Internal Area
109 Sq M - 1176 Sq Ft

a Websters Estate Agents 164 Heath Road, Twickenham, Middlesex TW1 4BN t 020 8892 3343 e sales@mywebsters.co.uk w mywebsters.co.uk

Disclaimer
These particulars, whilst believed to be accurate are set out as a general outline only for guidance and do not constitute any part of an offer or contract. Intending purchasers should not rely on them as statements of representation of fact, but must satisfy themselves by inspection or otherwise as to their accuracy. We have not carried out a detailed survey nor tested the services, appliances and specific fittings. Room sizes should not be relied upon for carpets and furnishings. The measurements given are approximate. No person in this firm's employment has the authority to make or give any representation or warranty in respect of the property.

