





# Broad Street, Teddington, TW11 8QT

Large Third Floor 1 bedroom apartment with entry phone access, well maintained communal areas and an allocated parking space at the rear. Situated in central Teddington less than 0.1 mile from town centre shops, restaurants and cafes, 0.2 miles from Teddington station and just 0.4 miles from Bushy Park.

Spacious and well proportioned 739 sq ft of living space on the top floor of a modern style building with wood flooring, double glazed windows, views across rooftops and potential to update and create a stylish bespoke home.

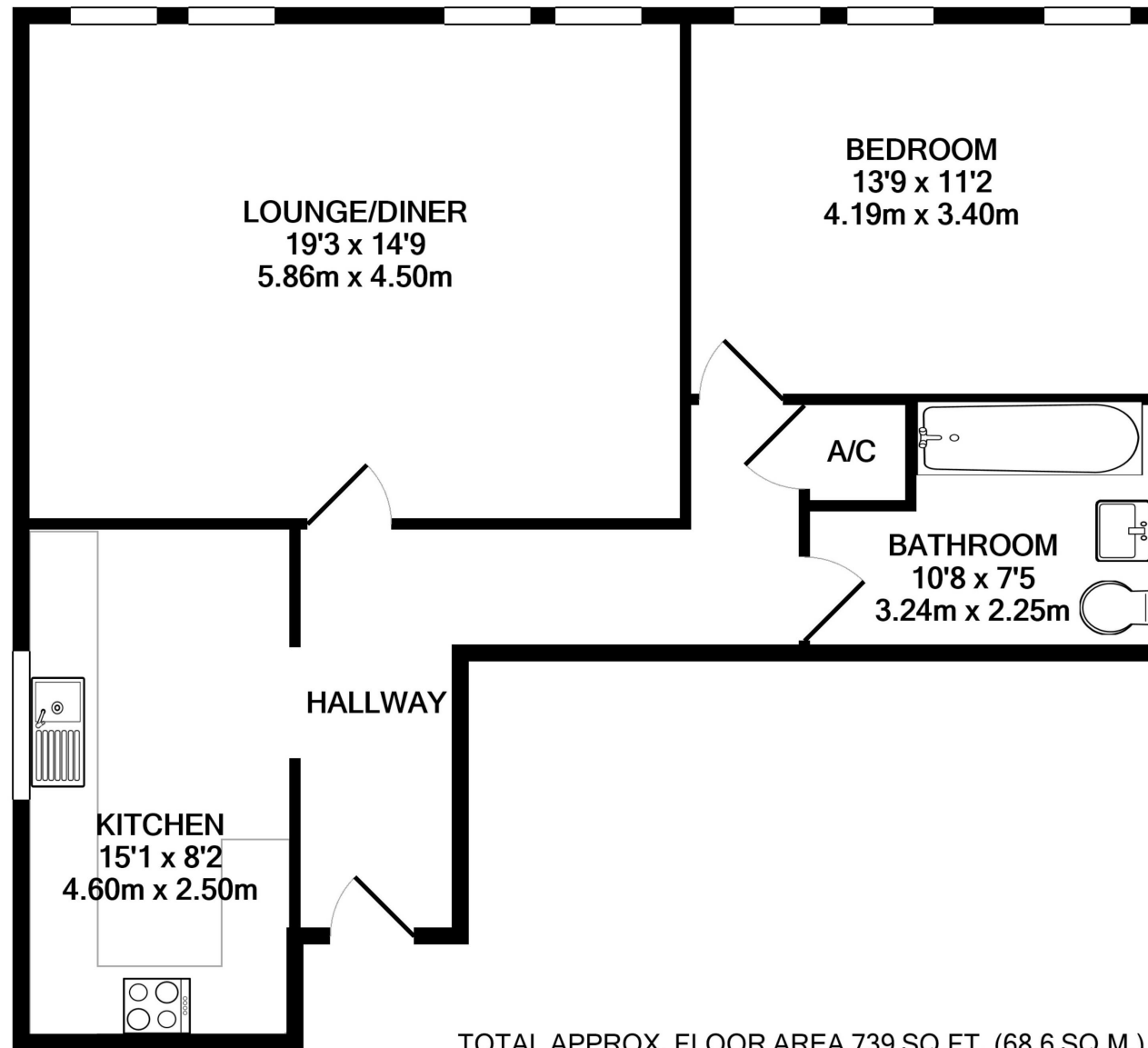
Entrance hallway leads to the living/dining room, the seperate fitted kitchen/breakfast room, the double bedroom and the bathroom

Located 0.7 miles from Teddington Footbridge across the Thames to the Lock, Ham Lands and towpath walks to Hampton Court Palace and Richmond.

EPC Rating E

- Large 1 Bedroom Apartment
- 739 Sq Ft of Living Space
- Private Parking Space
- Living/Dining Room and Seperate Kitchen
- Central Teddington Location
- 0.4 Miles from Bushy Park
- 0.2 Miles from Teddington Station





[a](#) Websters Estate Agents 36 Broad Street, Teddington, Middlesex TW11 8QY

[t](#) 020 8614 6000

[e](#) [sales@mywebsters.co.uk](mailto:sales@mywebsters.co.uk) [w](#) [mywebsters.co.uk](http://mywebsters.co.uk)

**Disclaimer**

These particulars, whilst believed to be accurate are set out as a general outline only for guidance and do not constitute any part of an offer or contract. Intending purchasers should not rely on them as statements of representation of fact, but must satisfy themselves by inspection or otherwise as to their accuracy. We have not carried out a detailed survey nor tested the services, appliances and specific fittings. Room sizes should not be relied upon for carpets and furnishings. The measurements given are approximate. No person in this firm's employment has the authority to make or give any representation or warranty in respect of the property.



