



SOLD
ANTONY
ROBERTS
020 8891 3309
www.websters.co.uk

Websters
estate agents
020 8892 3340 For Sale
mywebsters.co.uk

Websters
estate agents

Elmsleigh Road, Twickenham, TW2 5EF

First Floor purpose built 2 bedroom Maisonette in a popular and quiet cul-de-sac location with a Share of Freehold and a private rear garden. Situated 0.3 miles from Twickenham Green, local shops, restaurants and Crane Park with a bike/footpath along the river to Twickenham station.

Immaculately presented to offer 625sq ft of well proportioned living space with high specification fixtures fittings and floorings, double glazed windows, charming period features and potential to loft convert (subject to Planning Permission and Building Regulations)

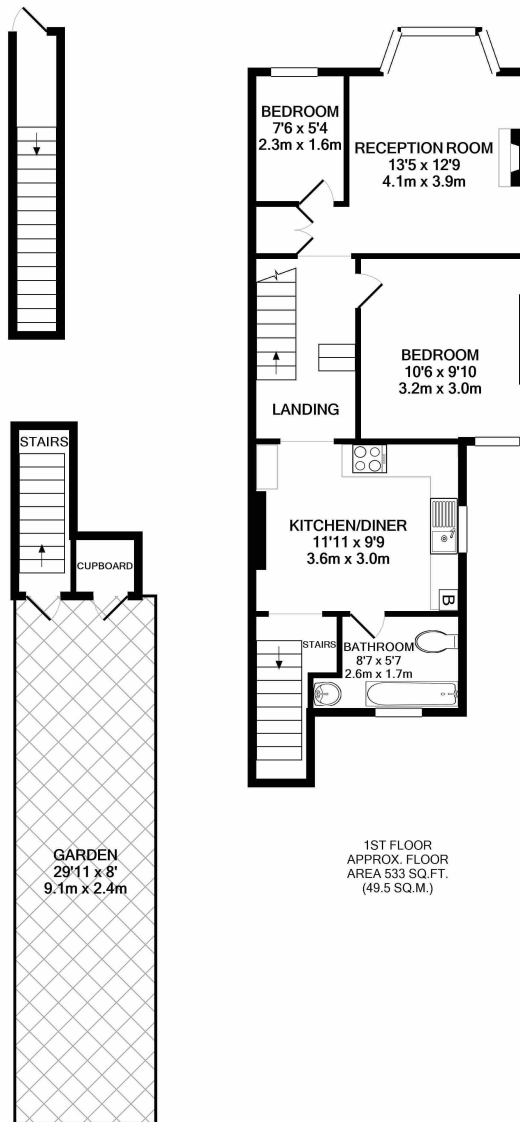
Private front door leads upstairs to the landing with access to the bay fronted living room, storage, the bedrooms and the kitchen/breakfast room at the rear. A door opens to the family bathroom and stairs lead down to the private garden with patio areas, lawn, storage cupboard and gated rear access.

Located 0.7 miles from Twickenham town centre and Strawberry Hill village and train station.

EPC Rating D

- First Floor 2 Bedroom Maisonette
- Share of Freehold
- Private 30 Ft Rear Garden
- Potential to Loft Convert (stpp)
- Residential Cul-de-Sac Location
- Immaculately Presented Throughout
- 0.3 Miles from Twickenham Green





1ST FLOOR
APPROX. FLOOR
AREA 533 SQ.FT.
(49.5 SQ.M.)

ENTRANCE FLOOR
APPROX. FLOOR
AREA 91 SQ.FT.
(8.5 SQ.M.)

TOTAL APPROX. FLOOR AREA 625 SQ.FT. (58.0 SQ.M.)

a Websters Estate Agents 164 Heath Road, Twickenham, Middlesex TW1 4BN **t** 020 8892 3343 **e** sales@mywebsters.co.uk **w** mywebsters.co.uk

Disclaimer

These particulars, whilst believed to be accurate are set out as a general outline only for guidance and do not constitute any part of an offer or contract. Intending purchasers should not rely on them as statements of representation of fact, but must satisfy themselves by inspection or otherwise as to their accuracy. We have not carried out a detailed survey nor tested the services, appliances and specific fittings. Room sizes should not be relied upon for carpets and furnishings. The measurements given are approximate. No person in this firm's employment has the authority to make or give any representation or warranty in respect of the property.

