



P Permit
holders only
Mon-Sat
8.30 am - 6.30 pm

44

44

Websters
estate agents

Warwick Road, Twickenham, TW2 6SW

Mid Terrace Victorian 3 bedroom home in a popular cul-de-sac location with a west facing garden. Situated 0.3 miles from Twickenham Green, local shops and restaurants, 0.4 miles from Archdeacon Primary and St Richard Reynolds and 0.6 miles from Trafalgar Primary Schools.

With no onward chain and in need of complete modernisation.

Currently offering 707 sq ft of living space over 2 floors with potential to substantially extend on the ground floor, reconfigure the layout and create a stylish bespoke home (subject to Planning Permission and Building Regulations)

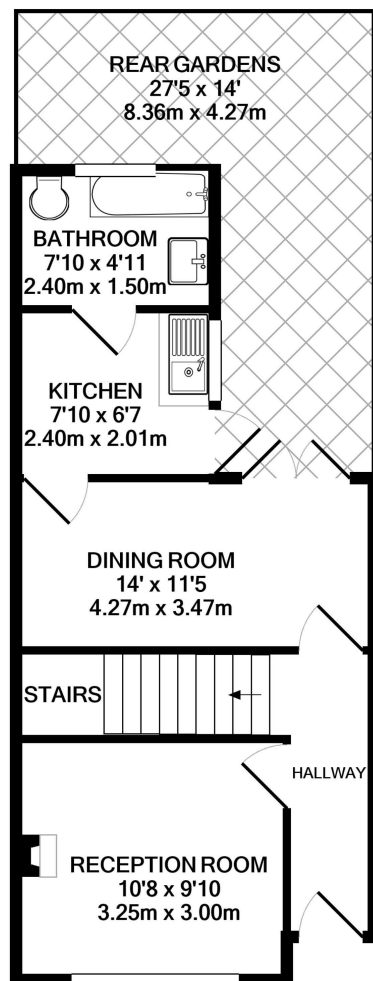
Entrance hallway leads to the living room at the front and the dining room with access to the kitchen and bathroom at the rear. Double doors in the dining room and a door in the kitchen open onto the south facing garden. On the first floor are 3 bedrooms and hatch access to loft storage.

Located 0.5 miles from Twickenham town centre and just 0.7 miles from Strawberry Hill and Twickenham mainline train stations.

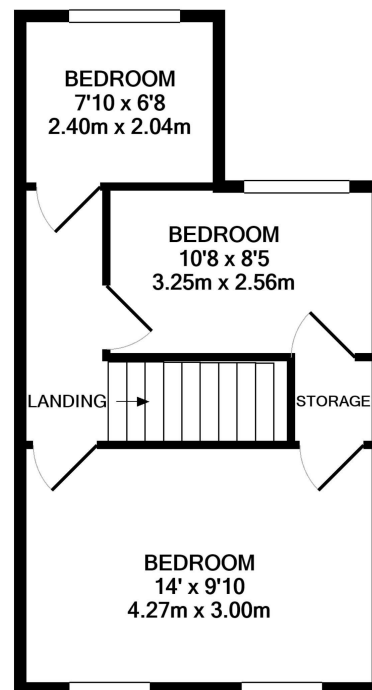
EPC Rating D

- Mid Terrace Victorian Home
- In Need of Complete Modernisation
- West Facing Garden
- No Onward Chain
- Quiet Cul-de-Sac Location
- Within 0.6 Miles of Popular Schools
- 0.3 Miles from Twickenham Green





GROUND FLOOR
APPROX. FLOOR
AREA 372 SQ.FT.
(34.6 SQ.M.)



1ST FLOOR
APPROX. FLOOR
AREA 335 SQ.FT.
(31.1 SQ.M.)

TOTAL APPROX. FLOOR AREA 707 SQ.FT. (65.7 SQ.M.)

a Websters Estate Agents 36 Broad Street, Teddington, Middlesex TW11 8QY

t 020 8614 6000

e sales@mywebsters.co.uk **w** mywebsters.co.uk

Disclaimer

These particulars, whilst believed to be accurate are set out as a general outline only for guidance and do not constitute any part of an offer or contract. Intending purchasers should not rely on them as statements of representation of fact, but must satisfy themselves by inspection or otherwise as to their accuracy. We have not carried out a detailed survey nor tested the services, appliances and specific fittings. Room sizes should not be relied upon for carpets and furnishings. The measurements given are approximate. No person in this firm's employment has the authority to make or give any representation or warranty in respect of the property.

