



Websters  
estate agents  
020 8862 3343  
mywebsters.co.uk For Sale

Websters  
estate agents



# Warwick Road, Twickenham, TW2 6SW

End of Terrace Victorian 2 double bedroom cottage in a popular cul-de-sac location with a larger than average west facing garden. Situated 0.3 miles from Twickenham Green, local shops and restaurants, 0.4 miles from Archdeacon Primary and St Richard Reynolds and 0.6 miles from Trafalgar Primary Schools.

Immaculately presented to offer 805 sq ft of well proportioned living space over 2 floors with high specification fixtures, fittings and floorings, double glazed windows and doors, charming period features and modern decor throughout.

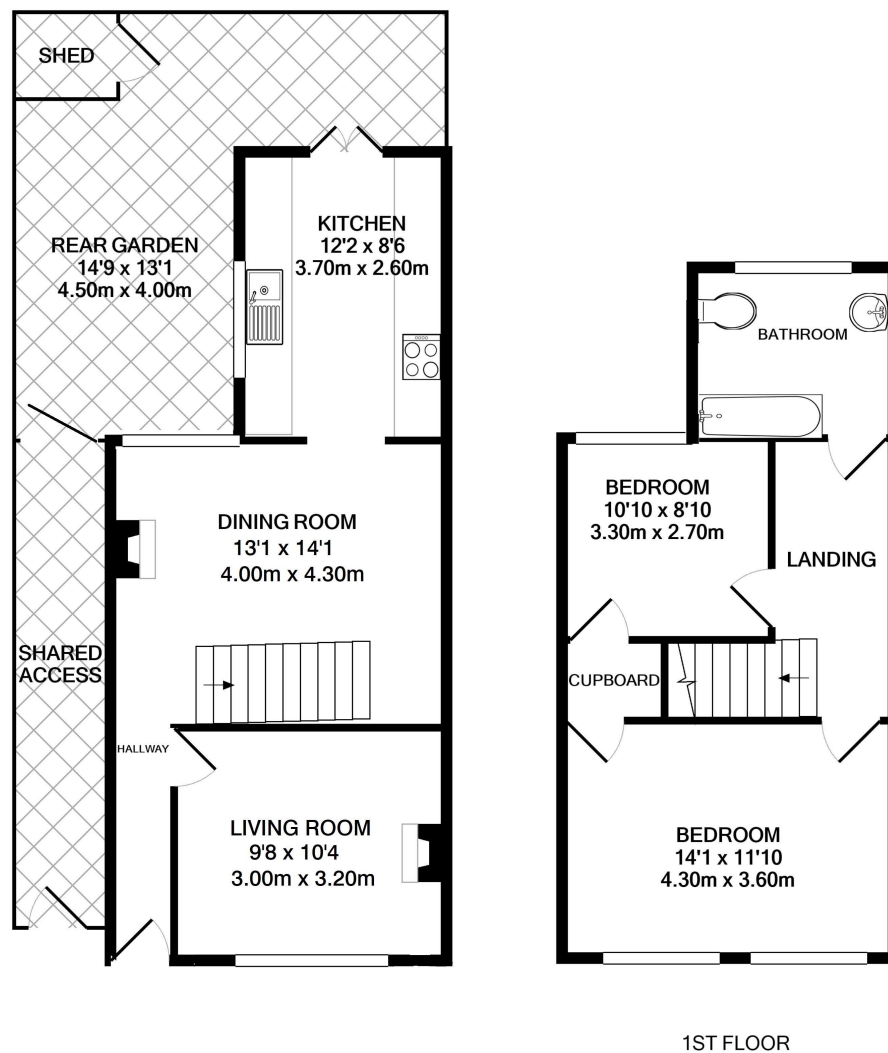
Entrance hallway leads to the living room and the separate dining/family room with access to the stylish fitted kitchen at the rear. Double doors open onto the garden with a patio, astroturf lawn, shed storage and gated side access. On the first floor are 2 bedrooms, the luxury family bathroom and hatch access to loft storage.

Located 0.5 miles from Twickenham town centre and just 0.7 miles from Strawberry Hill and Twickenham mainline train stations.

EPC Rating E

- End of Terrace Victorian Family Home
- 2 Bedrooms and Upstairs Bathroom
- Immaculately Presented Throughout
- 805 Sq Ft of Living Space over 2 Floors
- Popular Residential Area
- High Specification Fixtures, Fittings and Floorings
- 0.7 Miles from Twickenham Station





GROUND FLOOR

1ST FLOOR

TOTAL APPROX. FLOOR AREA 805 SQ.FT. (74.8 SQ.M.)

[a](#) Websters Estate Agents 164 Heath Road, Twickenham, Middlesex TW1 4BN

[t](#) 020 8892 3343

[e](#) [sales@mywebsters.co.uk](mailto:sales@mywebsters.co.uk) [w mywebsters.co.uk](http://mywebsters.co.uk)

**Disclaimer**

These particulars, whilst believed to be accurate are set out as a general outline only for guidance and do not constitute any part of an offer or contract. Intending purchasers should not rely on them as statements of representation of fact, but must satisfy themselves by inspection or otherwise as to their accuracy. We have not carried out a detailed survey nor tested the services, appliances and specific fittings. Room sizes should not be relied upon for carpets and furnishings. The measurements given are approximate. No person in this firm's employment has the authority to make or give any representation or warranty in respect of the property.



