



Websters  
estate agents



# Mereway Road, Twickenham, TW2 6RG

End of Terrace 3 bedroom Victorian cottage with a south west facing garden in a popular residential location. Situated 0.2 miles from Twickenham Green, local shops, cafes and restaurants and just 0.8 miles from Twickenham town centre and mainline train station.

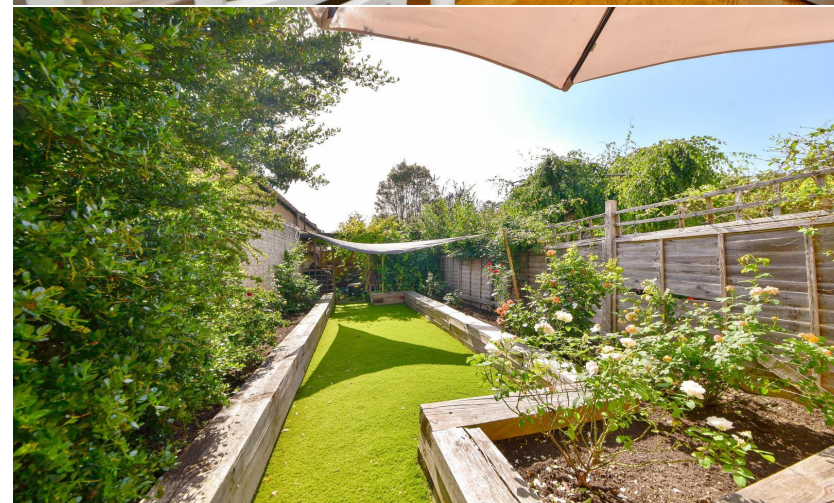
Tastefully presented to offer 738sq ft of living space over 2 floors with charming period features, high specification fixtures, fittings and floorings, double glazed windows and doors and potential to extend at the rear/side of the property and loft convert (subject to Planning Permission and Building Regulations)

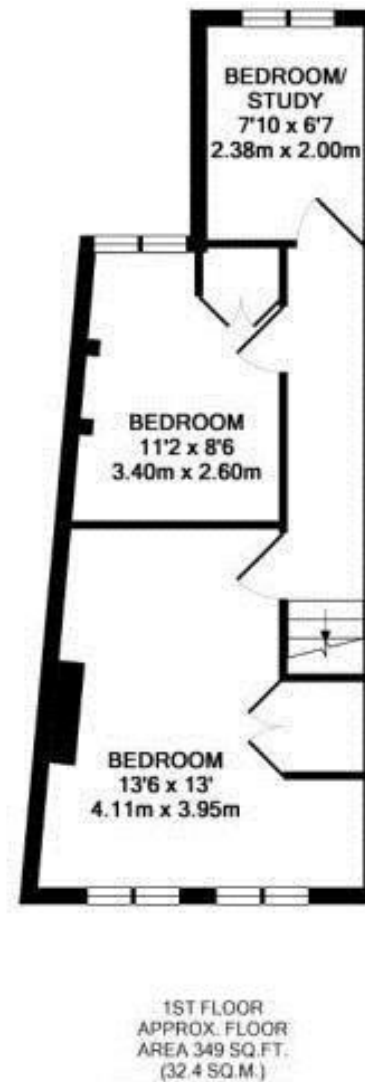
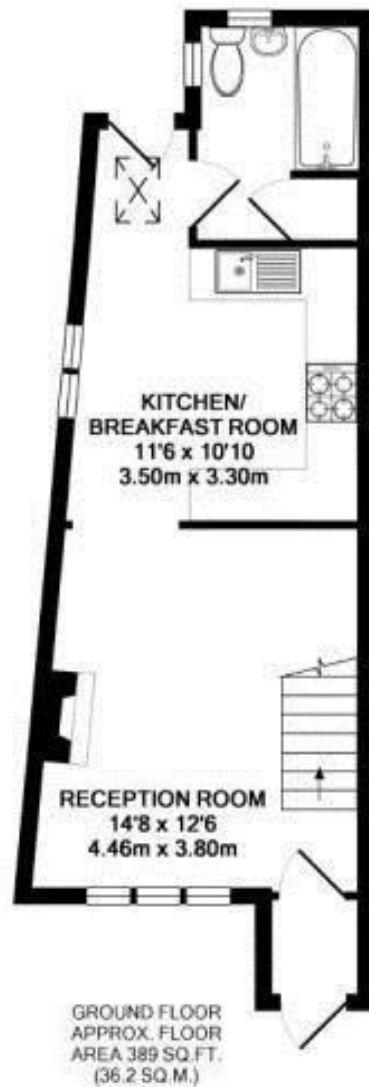
Front porch opens into the living room with open access to the kitchen/dining room at the rear. This well planned room has a stylish fitted kitchen, adequate space for dining and a lobby with access to the family bathroom. A door opens directly onto the fabulous garden with a patio area, astroturf lawn, shed storage and secure gated side access. On the first floor are 3 bedrooms and hatch access to loft storage.

Situated only 40 metres from Kneller Gardens and the River Thames, 0.4 miles from Archdeacon and Trafalgar Primary Schools and only 0.7 miles from St Richard Reynolds and Waldegrave Girls School/Co-ed Sixth Form.

EPC Rating D

- End of Terrace 3 Bedroom Victorian Home
- South West Facing Garden
- Potential to Extend (stpp)
- Living Room and Kitchen/Dining Room
- Tastefully Presented Throughout
- 0.2 Miles from Twickenham Green
- Within 0.7 Miles of Popular Schools





MEREWAY ROAD, TW2  
TOTAL APPROX. FLOOR AREA 738 SQ.FT. (68.6 SQ.M.)

**a** Websters Estate Agents 36 Broad Street, Teddington, Middlesex TW11 8QY

**t** 020 8614 6000

**e** sales@mywebsters.co.uk **w** mywebsters.co.uk

**Disclaimer**

These particulars, whilst believed to be accurate are set out as a general outline only for guidance and do not constitute any part of an offer or contract. Intending purchasers should not rely on them as statements of representation of fact, but must satisfy themselves by inspection or otherwise as to their accuracy. We have not carried out a detailed survey nor tested the services, appliances and specific fittings. Room sizes should not be relied upon for carpets and furnishings. The measurements given are approximate. No person in this firm's employment has the authority to make or give any representation or warranty in respect of the property.



