



Websters
estate agents

Copthall Gardens, Twickenham, TW1 4HJ

Mid Terrace 3 bedroom Edwardian family home in a highly desirable Twickenham location. Situated 0.1 mile from St Richard Reynolds and within 0.7 miles of Archdeacon, St Marys Primary and Orleans Schools/Sixth Form.

Tastefully presented to offer 1123 sq ft of well balanced living space over 2 floors with period features, original sash windows, high ceilings and potential to extend, reconfigure the layout and loft convert to create a stunning bespoke family home (subject to Planning Permission and Building Regulations)

Entrance hallway leads to the bay fronted living room, the dining room and the kitchen/breakfast room with fitted units, space for dining and storage. Doors in the kitchen and dining room open onto the 98ft garden with a patio, lawn, mature planting and shed storage.

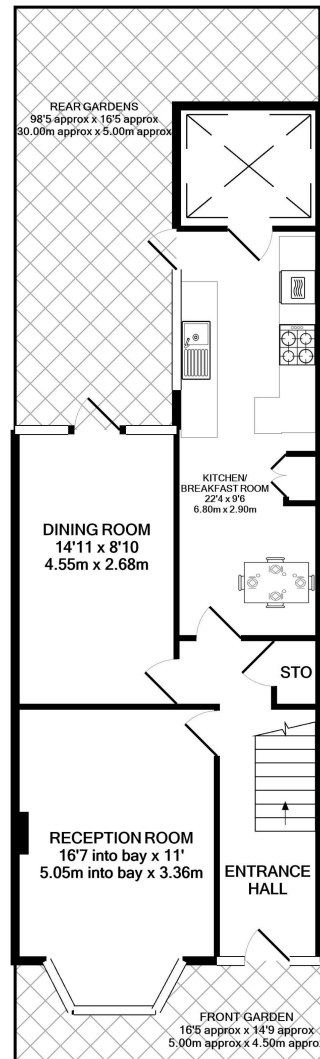
On the first floor are 3 bedrooms, the family bathroom and hatch access to loft storage.

Located less than 0.2 miles from High Street shops, bars and restaurants and 0.4 miles from Twickenham Green, Twickenham mainline train station, Church Street and the River Thames with a towpath walk past Marble Hill Park to Richmond.

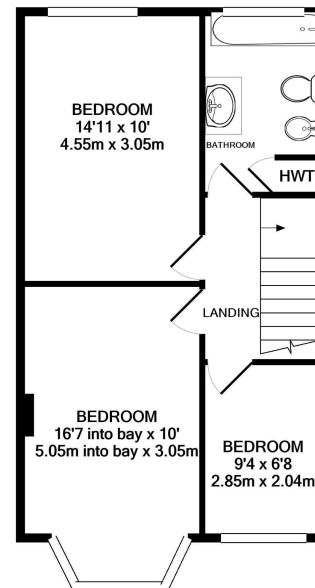
EPC Rating D

- Mid Terrace 3 Bedroom Edwardian Home
- Central Twickenham Location
- 2 Living Rooms and Kitchen/Breakfast Room
- Potential to Extend and Loft Convert (stpp)
- 98 Ft Mature Rear Garden
- Well Balanced Living Space over 2 Floors
- Close to Numerous Popular Schools
- 0.4 Miles from Twickenham Station





GROUND FLOOR
APPROX. FLOOR
AREA 633 SQ.FT.
(58.8 SQ.M.)



1ST FLOOR
APPROX. FLOOR
AREA 490 SQ.FT.
(45.6 SQ.M.)

TOTAL APPROX. FLOOR AREA 1123 SQ.FT. (104.3 SQ.M.)

a Websters Estate Agents 36 Broad Street, Teddington, Middlesex TW11 8QY

t 020 8614 6000

e sales@mywebsters.co.uk **w** mywebsters.co.uk

Disclaimer

These particulars, whilst believed to be accurate are set out as a general outline only for guidance and do not constitute any part of an offer or contract. Intending purchasers should not rely on them as statements of representation of fact, but must satisfy themselves by inspection or otherwise as to their accuracy. We have not carried out a detailed survey nor tested the services, appliances and specific fittings. Room sizes should not be relied upon for carpets and furnishings. The measurements given are approximate. No person in this firm's employment has the authority to make or give any representation or warranty in respect of the property.

