



Websters
estate agents

Cambridge Park, East Twickenham ,TW1 2JU

Fabulous Second Floor 2 bedroom apartment in a stunning detached Victorian property in the highly desirable Cambridge Park area just 0.1 mile from East Twickenham shops, cafes and restaurants and 0.3 miles from Marble Hill Park and the River Thames.

Converted in 2011 to create a high specification development of luxury apartments with allocated residents parking, communal gardens, lockable cycle storage and secure entryphone access to the stunning communal hallway.

Immaculately presented to offer an impressive 914 sq ft of living space with modern fixtures, fittings and floorings, energy efficient heating, lighting and appliances, sash windows, high ceilings and neutral decor throughout.

Entrance hallway leads to the fabulous L-shaped living/dining room, the separate stylish integrated kitchen, the bathroom and the 2 bedrooms, both with built in and eaves storage and the main bedroom with an en-suite shower room

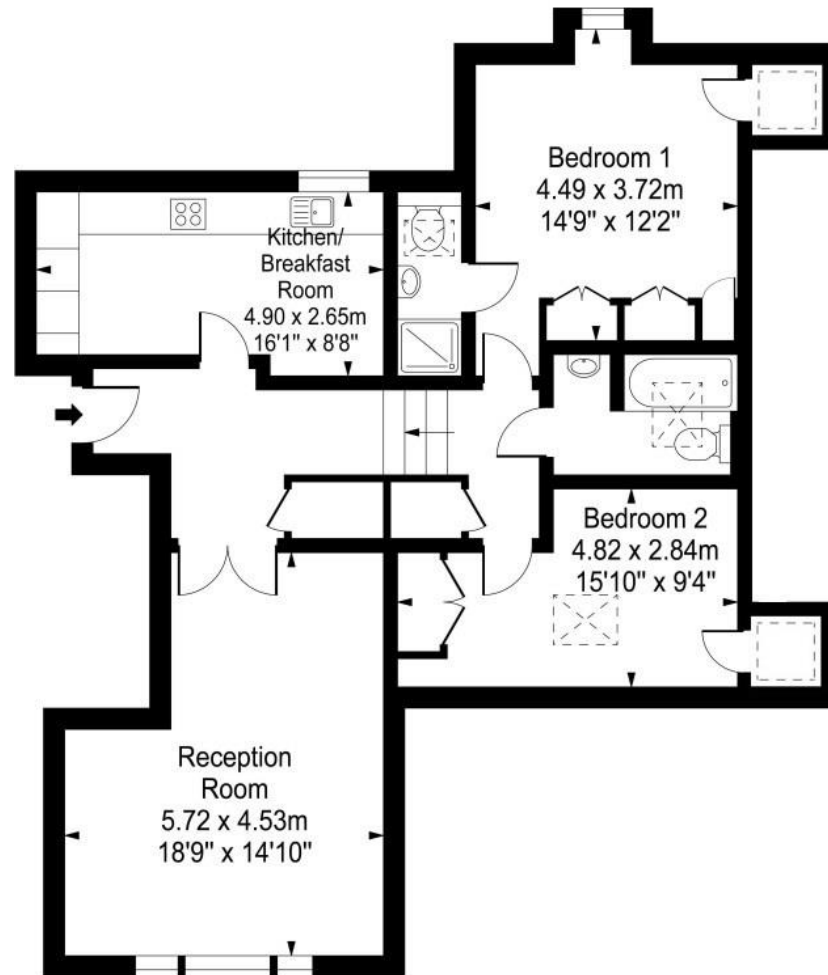
Located within 0.5 miles of St Margarets Village and train station and historic Richmond upon Thames.

EPC Rating C

- Fabulous Large Second Floor Apartment
- 2 Bedrooms and 2 Bathrooms
- 914 Sq Ft of Living Space
- Living/Dining Room and Separate Kitchen
- Allocated Residents Parking
- Immaculately Presented Throughout
- 0.5 Miles from St Margarets Village and Train Station
- 0.2 Miles from Richmond Bridge



Flat 14 Hatfield House



Second Floor

Total Approx Floor Area 85 sq m (914 sq ft)

a Websters Estate Agents 36 Broad Street, Teddington, Middlesex TW11 8QY

t 020 8614 6000

e sales@mywebsters.co.uk **w** mywebsters.co.uk

Disclaimer

These particulars, whilst believed to be accurate are set out as a general outline only for guidance and do not constitute any part of an offer or contract. Intending purchasers should not rely on them as statements of representation of fact, but must satisfy themselves by inspection or otherwise as to their accuracy. We have not carried out a detailed survey nor tested the services, appliances and specific fittings. Room sizes should not be relied upon for carpets and furnishings. The measurements given are approximate. No person in this firm's employment has the authority to make or give any representation or warranty in respect of the property.

