



Popesgrove Mansions, Twickenham, TW1 4AX

Spacious Second Floor 2 double bedroom apartment in a popular well maintained development with secure entryphone access, private front door from an external walkway and lovely communal gardens at the rear. Situated in central Twickenham with immediate access to shops and public transport and just 0.5 miles from Twickenham mainline train station.

With no onward chain and tastefully presented to offer 684 sq ft of well proportioned living space with high specification fixtures, fittings and floorings, large double glazed windows, built in storage, gas central heating and neutral decor throughout.

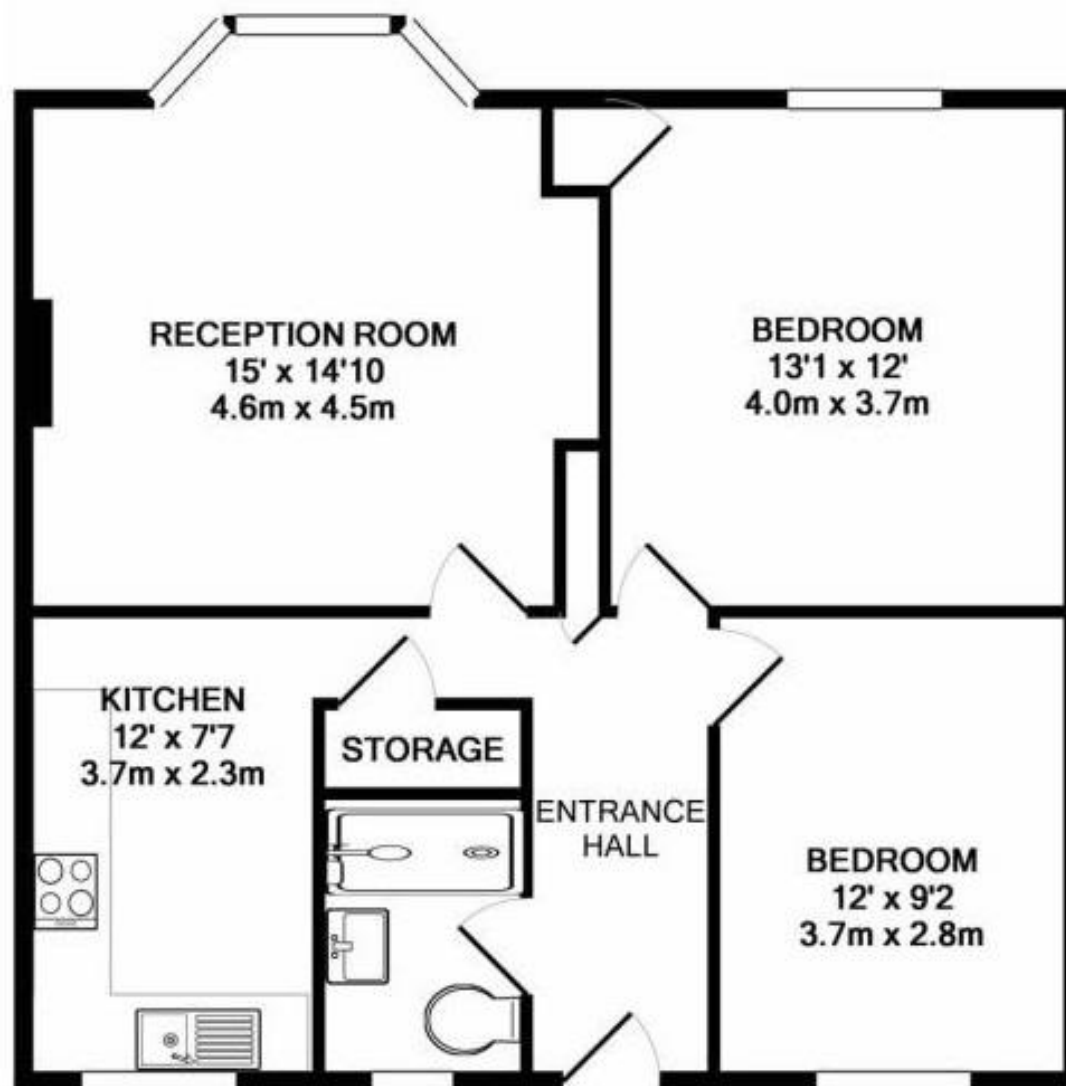
Entrance hallway leads to the 2 double bedrooms, the bathroom, the bay fronted living room with wood flooring and the separate stylish fitted kitchen with space for dining.

Located 0.4 miles from Twickenham Green and only 0.2 miles from popular Church Street bars and restaurants and Twickenham Riverside with a towpath walk along the Thames past Marble Hill House to Richmond.

EPC Rating D

- Second Floor Purpose Built Apartment
- 2 Double Bedrooms
- No Onward Chain
- Central Twickenham Location
- Entry Phone Access and Communal Gardens
- Tastefully Presented Throughout
- 0.5 Miles from Twickenham Station





TOTAL APPROX. FLOOR AREA 684 SQ.FT. (63.6 SQ.M.)

a Websters Estate Agents 36 Broad Street, Teddington, Middlesex TW11 8QY

t 020 8614 6000

e sales@mywebsters.co.uk **w** mywebsters.co.uk

Disclaimer

These particulars, whilst believed to be accurate are set out as a general outline only for guidance and do not constitute any part of an offer or contract. Intending purchasers should not rely on them as statements of representation of fact, but must satisfy themselves by inspection or otherwise as to their accuracy. We have not carried out a detailed survey nor tested the services, appliances and specific fittings. Room sizes should not be relied upon for carpets and furnishings. The measurements given are approximate. No person in this firm's employment has the authority to make or give any representation or warranty in respect of the property.

