



Laurel Avenue, Twickenham, TW1 4HZ

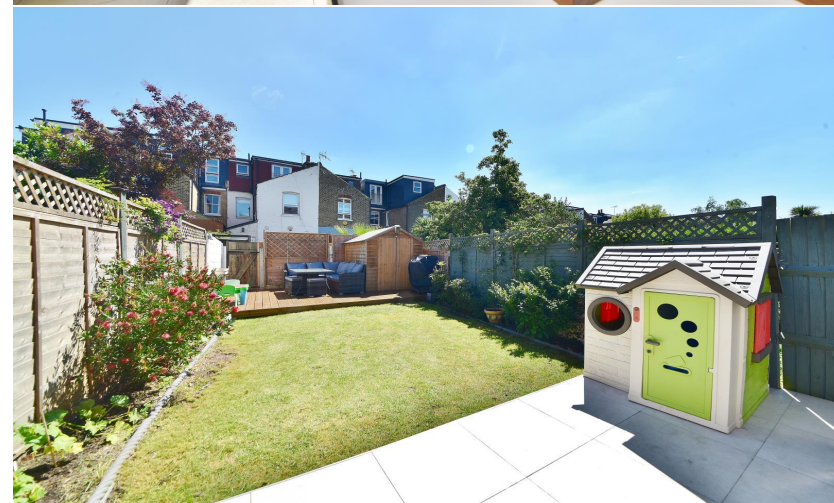
Mid Terrace 3 double bedroom Victorian family home in a popular residential location only 0.2 miles from Twickenham Green, local shops, bars and restaurants and 0.5 miles from Twickenham town centre and mainline train station.

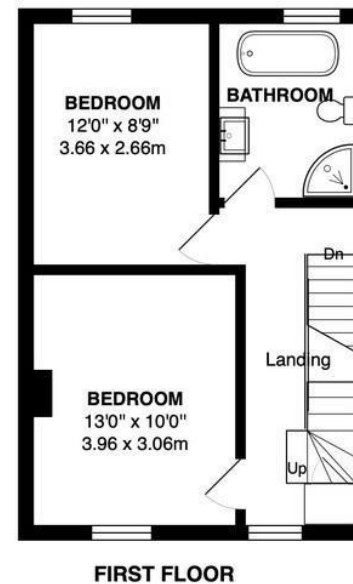
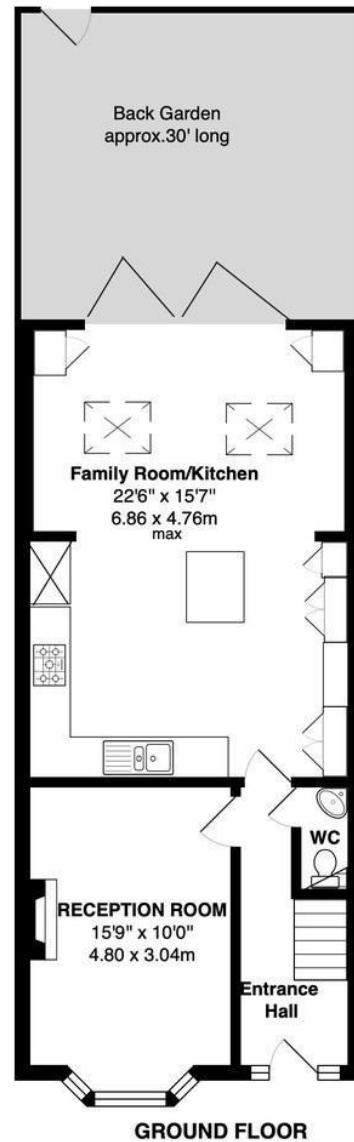
Extended and loft converted to an impressive standard to offer 1216 sq ft of well balanced living space over 3 floors with high specification fixtures, fittings and floorings, charming period features, double glazed sash style windows with shutters and neutral decor throughout.

Entrance hallway leads to the bay fronted living room, the w.c and the stunning open plan kitchen/family room. This light filled room has a stone tiled floor, stylish integrated kitchen with central island, velux roof windows, a feature brick wall and adequate room for dining and seating. Folding doors open onto the garden with a patio, lawn, shed storage and gated rear access. On the first floor are 2 bedrooms, the luxury family bathroom and stairs up to the master bedroom with built in and eaves storage and an en-suite shower room.

Located just 0.4 miles from Archdeacon Primary and Sir Richard Reynolds School, 0.6 miles from Trafalgar Infants and only 0.8 miles from Waldegrave Girls School/Co-ed Sixth Form. EPC Rating D

- Mid Terrace Victorian Family Home
- 3 Double Bedrooms and 2 Bathrooms
- Living Room and Kitchen/Family Room
- High Specification Throughout
- 1216 Sq Ft of Living Space over 3 Floors
- 0.5 Miles from Twickenham Station
- Close to Numerous Popular Schools





TOTAL FLOOR AREA approx 1216 Sq Feet (113 Sq M)

[a](#) Websters Estate Agents 36 Broad Street, Teddington, Middlesex TW11 8QY

[t](#) 020 8614 6000

[e](#) sales@mywebsters.co.uk [w](#) mywebsters.co.uk

Disclaimer

These particulars, whilst believed to be accurate are set out as a general outline only for guidance and do not constitute any part of an offer or contract. Intending purchasers should not rely on them as statements of representation of fact, but must satisfy themselves by inspection or otherwise as to their accuracy. We have not carried out a detailed survey nor tested the services, appliances and specific fittings. Room sizes should not be relied upon for carpets and furnishings. The measurements given are approximate. No person in this firm's employment has the authority to make or give any representation or warranty in respect of the property.

