



Websters  
estate agents



# Fourth Cross Road, Twickenham, TW2 5EP

Mid Terrace 4 bedroom family home in a popular residential area. Situated 0.2 miles from Trafalgar Primary and Waldegrave Girls/Co-ed Sixth Form, 0.5 miles from Archdeacon and St James Primary Schools and 0.7 miles from Strawberry Hill train station.

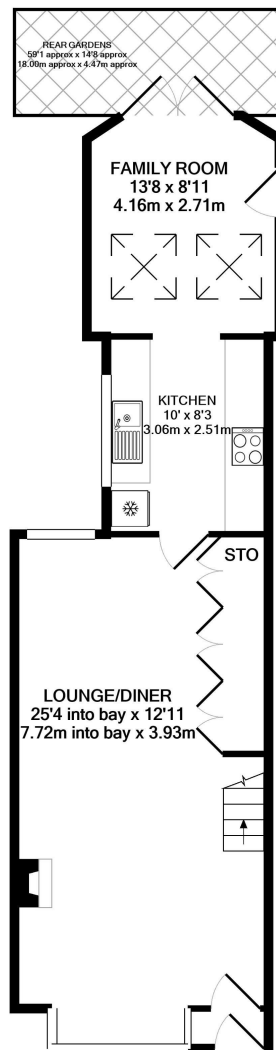
Extended at the rear, loft converted and tastefully presented to offer 1459 sq ft of well proportioned living space over 3 floors with modern fixtures, fittings and floorings, charming period features, sash windows and larger than average rooms on the first and second floors.

Entrance porch opens into the dual aspect living room with a feature fireplace, wood flooring and space for seating and dining. A door at the rear leads to the fitted kitchen and the family/garden room with double doors directly onto the 60ft garden with patios, a lawn and mature planting. On the first floor are 2 double bedrooms, the large family bathroom and stairs up to the shower room and 2 further bedrooms, the larger with access to eaves storage.

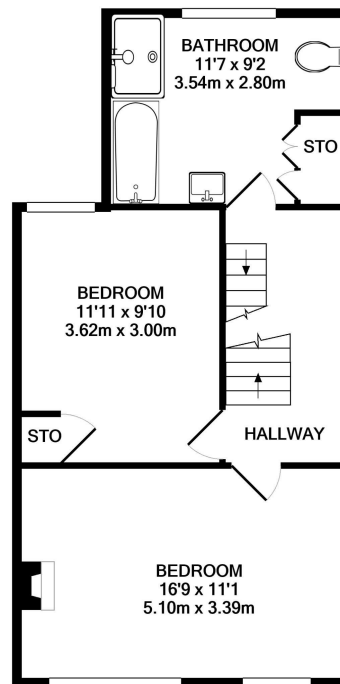
Located 0.3 miles from Crane Park with a foot/bike path along the River Crane into Twickenham and 0.4 miles from Twickenham Green, local shops, cafes and restaurants. EPC Rating D

- Mid Terrace Victorian Family Home
- 4 Bedrooms and 2 Bathrooms
- 1459 Sq Ft of Living Space over 3 Floors
- Open Plan Living Room and Separate Kitchen
- Tastefully presented Throughout
- 0.4 Miles from Twickenham Green
- Within 0.5 Miles of Popular Schools

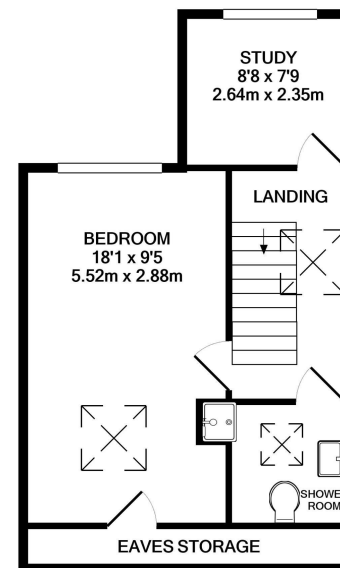




GROUND FLOOR  
APPROX. FLOOR  
AREA 523 SQ.FT.  
(48.6 SQ.M.)



1ST FLOOR  
APPROX. FLOOR  
AREA 526 SQ.FT.  
(48.9 SQ.M.)



2ND FLOOR  
APPROX. FLOOR  
AREA 410 SQ.FT.  
(38.1 SQ.M.)

TOTAL APPROX. FLOOR AREA 1459 SQ.FT. (135.6 SQ.M.)

[a](#) Websters Estate Agents 36 Broad Street, Teddington, Middlesex TW11 8QY

[t](#) 020 8614 6000

[e](#) [sales@mywebsters.co.uk](mailto:sales@mywebsters.co.uk) [w mywebsters.co.uk](http://mywebsters.co.uk)

**Disclaimer**

These particulars, whilst believed to be accurate are set out as a general outline only for guidance and do not constitute any part of an offer or contract. Intending purchasers should not rely on them as statements of representation of fact, but must satisfy themselves by inspection or otherwise as to their accuracy. We have not carried out a detailed survey nor tested the services, appliances and specific fittings. Room sizes should not be relied upon for carpets and furnishings. The measurements given are approximate. No person in this firm's employment has the authority to make or give any representation or warranty in respect of the property.



