



16

Websters  
estate agents



# Lion Road, Twickenham, TW1 4JF

Mid Terrace 3 double bedroom Victorian family home with a 60ft rear garden. Situated in a popular residential location just 0.2 miles from Twickenham Green, local shops, bars and restaurants and 0.6 miles from Twickenham town centre and mainline train station.

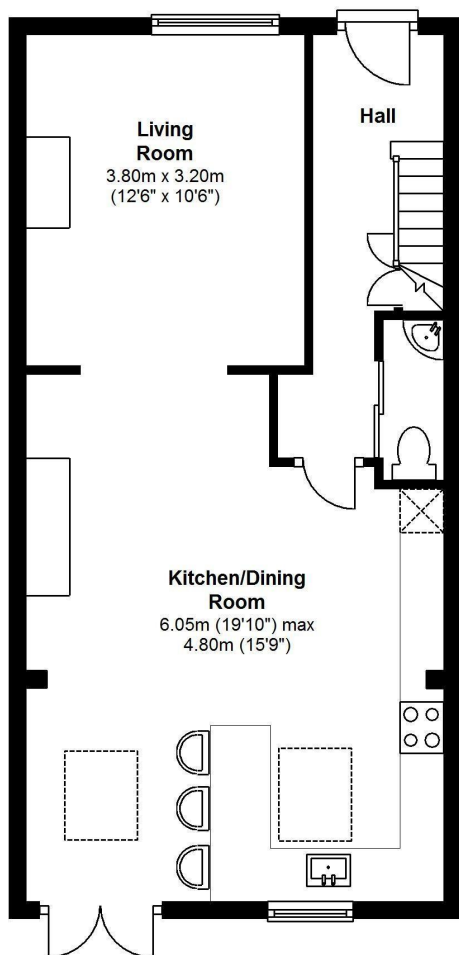
Extended at the rear, loft converted and tastefully presented to offer 1130 sq ft of well proportioned living space over 3 floors with high specification fixtures, fittings and flooring, double glazed windows and doors, charming period features and neutral decor throughout.

Entrance hallway leads to a w.c and the spacious kitchen/family room at the rear. This light filled room has a stylish fitted kitchen, wood flooring, velux roof windows, space for dining and access to the living room with a wood burning stove and plantation style shutters. Doors in the dining area open onto the 60ft part walled garden with a patio, lawn and shed storage. On the first floor are 2 double bedrooms and the luxury family bathroom with stairs up to the master bedroom with an en-suite shower room, juliet balcony and eaves storage.

Located 0.4 miles from Archdeacon Primary and St Richard Reynolds Schools, 0.6 miles from Trafalgar Primary School and 0.8 miles from Waldegrave Girls/Co-ed Sixth Form. EPC Rating D

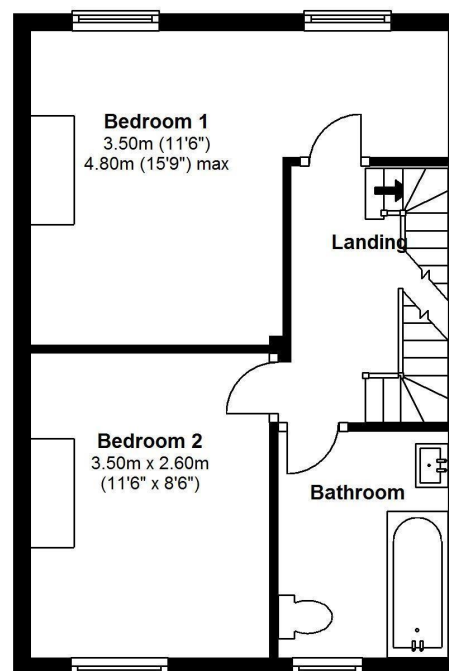
- Mid Terrace Victorian Family Home
- 3 Double Bedrooms and 2 Bathrooms
- Part Walled 60ft Rear Garden
- Living Room and Kitchen/Family Room
- Tastefully Presented Throughout
- 0.2 Miles from Twickenham Green
- Within 0.6 Miles of Popular Schools





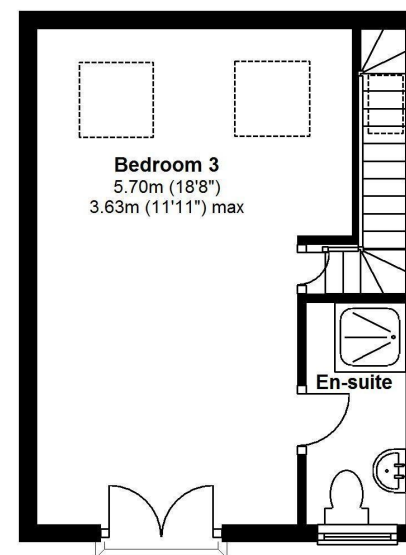
**Ground Floor**

*Approx.area 487 Sq.Feet (45 sq.metres)*



**First Floor**

*Approx.area 364 Sq.Feet (34 sq.metres)*



**Second Floor**

*Approx.area 279 Sq.Feet (26 sq.metres)*

*Total Floor Area Approx. 1,130 Sq.Feet (105 sq.metres)*

**a** Websters Estate Agents 164 Heath Road, Twickenham, Middlesex TW1 4BN

**t** 020 8892 3343

**e** sales@mywebsters.co.uk **w** mywebsters.co.uk

**Disclaimer**

These particulars, whilst believed to be accurate are set out as a general outline only for guidance and do not constitute any part of an offer or contract. Intending purchasers should not rely on them as statements of representation of fact, but must satisfy themselves by inspection or otherwise as to their accuracy. We have not carried out a detailed survey nor tested the services, appliances and specific fittings. Room sizes should not be relied upon for carpets and furnishings. The measurements given are approximate. No person in this firm's employment has the authority to make or give any representation or warranty in respect of the property.



