



Websters
estate agents

Popes Avenue, Strawberry Hill, TW2 5TD

Lower Ground Floor 2 bedroom apartment in an attractive Victorian property with a private front door entrance, garden and an outside storage cupboard. Situated just 0.2 miles from Twickenham Green and Strawberry Hill village shops and train station.

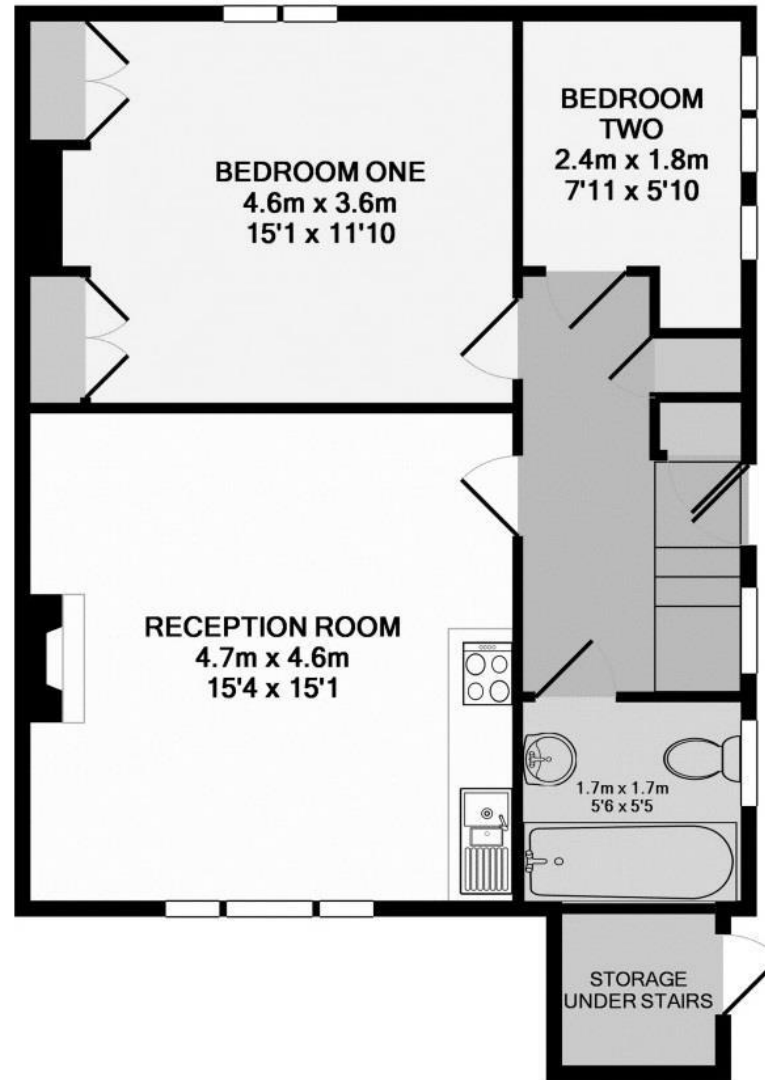
Tastefully presented to offer 633 sq ft of well balanced living space with high specification fixtures and fittings, wood flooring, neutral decor, gas central heating and charming period features.

Front door at the side of the property leads downstairs to the entrance hallway with doors to the bathroom, storage cupboards, the 2 bedrooms, the main with built in wardrobes and the spacious living room with a modern fitted kitchen, space for dining and seating and a feature fireplace.

Located 0.4 miles from Thames riverside Radnor Gardens and just 0.7 miles from Twickenham town centre and Church Street shops, bars and restaurants
EPC Rating D

- 2 Bedroom Apartment in a Victorian Property
- Private Front Door Entrance and Garden
- Lower Ground Floor
- Charming Period Features
- Well Balanced 633 Sq Ft of Living Space
- 0.7 Miles from Twickenham Town Centre
- 0.2 Miles from Strawberry Hill Station





TOTAL APPROX. FLOOR AREA 58.8 SQ.M. (633 SQ.FT.)

a Websters Estate Agents 36 Broad Street, Teddington, Middlesex TW11 8QY

t 020 8614 6000

e sales@mywebsters.co.uk **w** mywebsters.co.uk

Disclaimer

These particulars, whilst believed to be accurate are set out as a general outline only for guidance and do not constitute any part of an offer or contract. Intending purchasers should not rely on them as statements of representation of fact, but must satisfy themselves by inspection or otherwise as to their accuracy. We have not carried out a detailed survey nor tested the services, appliances and specific fittings. Room sizes should not be relied upon for carpets and furnishings. The measurements given are approximate. No person in this firm's employment has the authority to make or give any representation or warranty in respect of the property.

