



Websters
estate agents

Meadway, Twickenham, TW2 6PG

End of Terrace 3 bedroom family home with driveway parking and a south west facing garden. Situated just 0.3 miles from Twickenham Green, local shops, bars and restaurants, 0.1 mile from Trafalgar Nursery, less than 0.6 miles from Trafalgar Primary, Archdeacon Primary and Waldegrave Girls School/Co-ed Sixth Form.

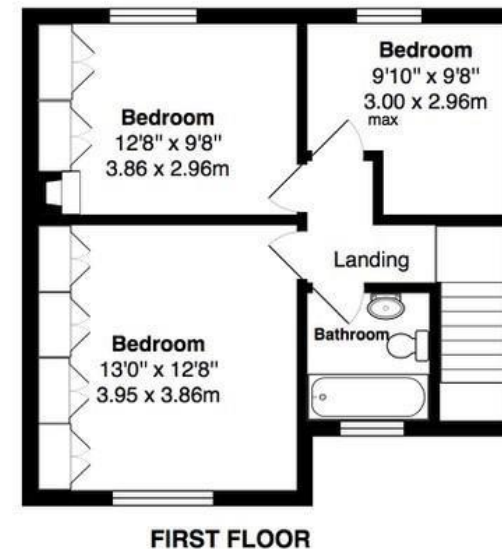
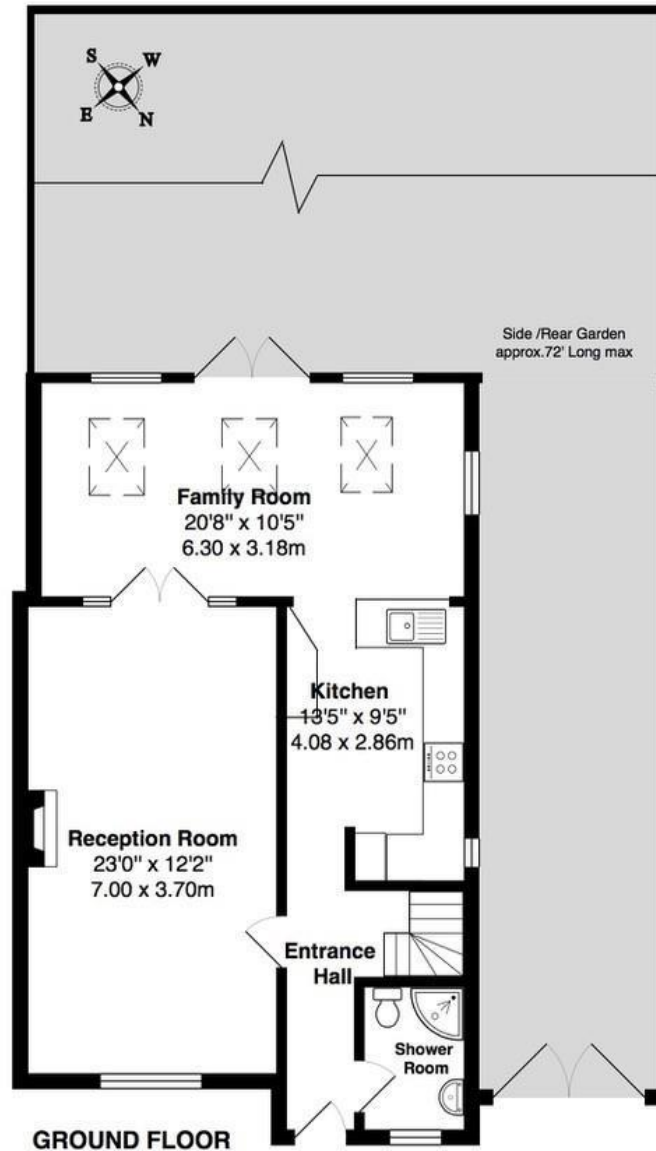
Extended at the rear and tastefully presented to offer 1260sq ft of well balanced living space over 2 floors with modern fixtures, fittings and floorings, double glazed windows and doors, neutral decor throughout and potential to further extend and loft convert (subject to Planning Permission and Building Regulations)

Entrance hallway leads to the living room, a shower room and the fitted kitchen with access into the family room at the rear. This light filled room has velux roof windows and space for seating and dining. Double doors open onto the 72 ft rear garden with a patio, lawn, shed storage and secure gated side access. On the first floor are 3 bedrooms, 2 with built in storage and the family bathroom.

Located 0.5 miles from Whitton town centre and mainline train station, 0.7 miles from Strawberry Hill village and station and only 0.3 miles from the A316 with direct access to the M3/M25 and into central London.
EPC Rating D

- End of Terrace 3 Bedroom Home
- 72 Ft South West Facing garden
- Potential to Extend/Loft Convert (stpp)
- Driveway Parking
- Spacious Living Room and Family Room
- Close to Popular Schools
- 0.3 Miles from Twickenham Green





TOTAL FLOOR AREA approx. = 1,260 Sq. Feet (117 sq metres)

a Websters Estate Agents 164 Heath Road, Twickenham, Middlesex TW1 4BN t 020 8892 3343 e sales@mywebsters.co.uk w mywebsters.co.uk

Disclaimer

These particulars, whilst believed to be accurate are set out as a general outline only for guidance and do not constitute any part of an offer or contract. Intending purchasers should not rely on them as statements of representation of fact, but must satisfy themselves by inspection or otherwise as to their accuracy. We have not carried out a detailed survey nor tested the services, appliances and specific fittings. Room sizes should not be relied upon for carpets and furnishings. The measurements given are approximate. No person in this firm's employment has the authority to make or give any representation or warranty in respect of the property.

