



Websters
estate agents

Richmond Road, Twickenham ,TW1 3AW

New Build 4 bedroom Detached family home with a front and rear garden. Situated just 0.5 miles from Twickenham town centre shops and mainline train station, 0.1 mile from Orleans Secondary/Sixth Form, 0.2 miles from Orleans and St Mary's Primary Schools and 0.3 miles from Thames Riverside Marble Hill Park.

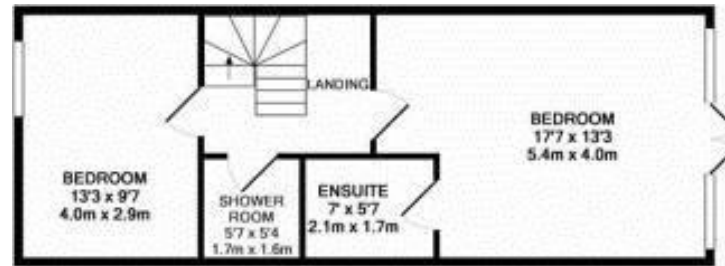
Brand new high specification, energy efficient home offering 1409 sq ft of well proportioned living space over 3 floors. Sympathetically designed to compliment the existing street scene with sash style double glazed windows and doors, stylish contemporary fixtures and fittings, oak flooring, tasteful neutral decor throughout and a 10 year new build warranty.

Door at the side of the property leads to the entrance hallway with access to the living room, a w.c and the kitchen/family room at the rear. This stunning room has a fabulous vaulted ceiling with roof lights, space for seating and dining and an integrated kitchen with a central island/breakfast bar. A door opens onto the walled garden with a patio, astroturf lawn and secure gated side access. Stairs lead down to the master bedroom with an en-suite bathroom, a separate shower room and a double bedroom. On the first floor are 2 bedrooms and the family bathroom.

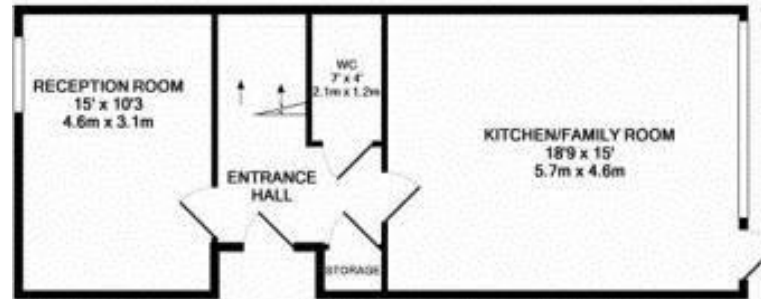
Located only 0.5 miles from St Margarets village boutique shops, restaurants and train station and 0.6 miles from the A316 with direct access to the M3/M25 and into central London. EPC Rating tbc

- Detached New Build Home
- 4 Bedrooms and 3 Bathrooms
- Living Room and Kitchen/Family Room
- Front and Rear Garden
- Impressive High Specification Throughout
- Available Now with No Chain
- Close to Popular Schools
- 0.5 Miles from Twickenham and St margarets Stations

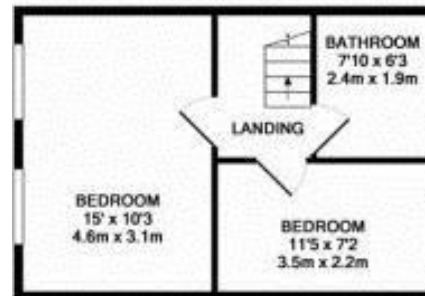




BASEMENT LEVEL



GROUND FLOOR



1ST FLOOR

TOTAL APPROX. FLOOR AREA 1409 SQ.FT. (130.9 SQ.M.)

a Websters Estate Agents 164 Heath Road, Twickenham, Middlesex TW1 4BN **t** 020 8892 3343 **e** sales@mywebsters.co.uk **w** mywebsters.co.uk

Disclaimer

These particulars, whilst believed to be accurate are set out as a general outline only for guidance and do not constitute any part of an offer or contract. Intending purchasers should not rely on them as statements of representation of fact, but must satisfy themselves by inspection or otherwise as to their accuracy. We have not carried out a detailed survey nor tested the services, appliances and specific fittings. Room sizes should not be relied upon for carpets and furnishings. The measurements given are approxiamte. No person in this firms employment has the authority to make or give any representation or warranty in respect of the property.

