



Websters  
estate agents



# Broom Park, Teddington, TW11 9RT

Sixth Floor Thames Riverside 920 sq ft, 2 double bedroom apartment in a popular residential development with stunning panoramic views across Surrey, entry phone access, lift service to all floors, communal riverside gardens, residents parking and a private garage in a separate block. Situated just 0.6 miles from Hampton Wick Village and train station.

Available with vacant possession, no onward chain and a newly extended long lease. This fabulous light filled apartment offers 920 sq ft of newly decorated living space with large double glazed windows, new carpet underlay and the opportunity to update and create a stylish bespoke home.

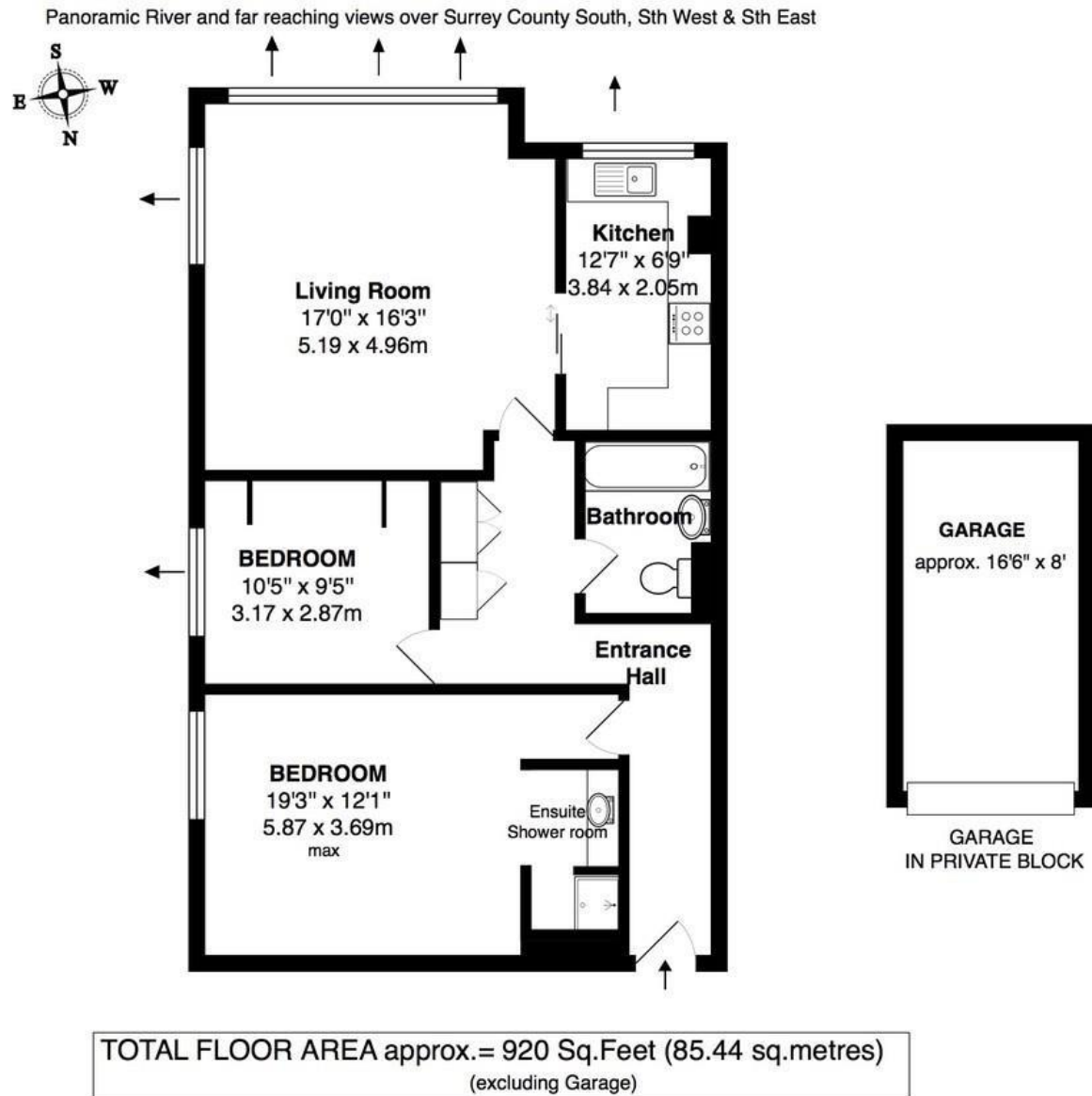
Entrance hallway leads to the 2 double bedrooms, the master with an en-suite shower, built in storage in the hallway, the family bathroom and the stunning living/dining room with a picture window and access to the fitted kitchen.

Located 0.9 miles from Bushy Park and Kingston Bridge across the Thames to the Town Centre and towpath walks along the river towards Hampton Court Palace and Richmond.

EPC Rating C

- Thames Riverside Apartment
- 920 Sq Ft of Living Space
- Panoramic River Views
- 2 Double Bedrooms
- Private Garage and Residents Parking
- Vacant Possession and No Chain
- Newly Extended Long Lease
- 0.6 Miles from Hampton Wick Station





**a** Websters Estate Agents 36 Broad Street, Teddington, Middlesex TW11 8QY

**t** 020 8614 6000

**e** sales@mywebsters.co.uk **w** mywebsters.co.uk

**Disclaimer**

These particulars, whilst believed to be accurate are set out as a general outline only for guidance and do not constitute any part of an offer or contract. Intending purchasers should not rely on them as statements of representation of fact, but must satisfy themselves by inspection or otherwise as to their accuracy. We have not carried out a detailed survey nor tested the services, appliances and specific fittings. Room sizes should not be relied upon for carpets and furnishings. The measurements given are approximate. No person in this firm's employment has the authority to make or give any representation or warranty in respect of the property.



