



Websters  
estate agents



# King Edwards Grove, Teddington, TW11 9LY

Semi Detached 6 double bedroom Edwardian family home with a part walled garden and driveway parking. Situated in a desirable Teddington River Roads location less than 0.4 miles from Collis Primary, Sacred Heart Primary and Teddington Secondary/Sixth Form and 0.7 miles from Hampton Wick Infants and St John the Baptist Junior Schools.

Stunning 2293 sq ft home with well proportioned living space over 3 floors, a 150 sq ft useable storage cellar and a delightful front garden with parking space. Tastefully presented with modern fixtures and fittings, some double glazing, high ceilings, charming period features and neutral decor throughout.

Front porch opens into the reception hallway with doors to the bay fronted living room, cellar, dining room, w.c and the kitchen/breakfast room. Doors in the dining room and kitchen open onto the part walled, north westerly facing garden with a patio, lawn, mature planting and secure gated side access.

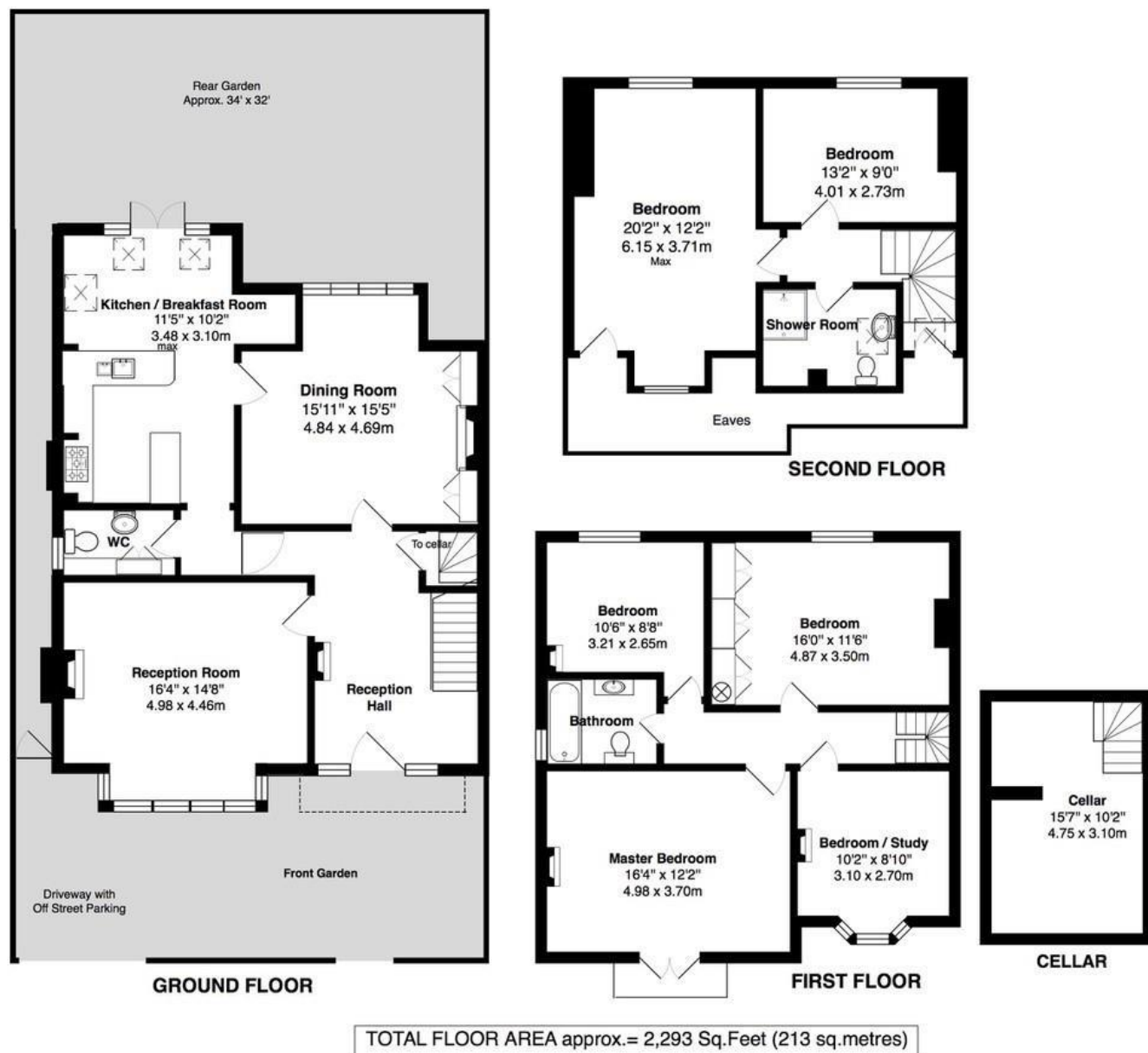
On the first floor are 4 bedrooms and the family bathroom with stairs up to 2 further bedrooms, a shower room and extensive eaves storage.

Located 0.6 miles from Teddington town centre shops, mainline train station, Bushy Park and Teddington Footbridge across the River Thames to Teddington Lock, Ham Lands and towpath walks to Hampton Court Palace and Richmond.

EPC Rating D

- Semi Detached Edwardian Family Home
- 6 Double Bedrooms
- 2293 Sq Ft of Living Space over 3 Floors
- Teddington River Roads Location
- Driveway Parking and West Facing Garden
- 0.6 Miles from Teddington Train Station
- Close to Numerous Popular Schools





a Websters Estate Agents 36 Broad Street, Teddington, Middlesex TW11 8QY

t 020 8614 6000

e sales@mywebsters.co.uk w mywebsters.co.uk

**Disclaimer**

These particulars, whilst believed to be accurate are set out as a general outline only for guidance and do not constitute any part of an offer or contract. Intending purchasers should not rely on them as statements of representation of fact, but must satisfy themselves by inspection or otherwise as to their accuracy. We have not carried out a detailed survey nor tested the services, appliances and specific fittings. Room sizes should not be relied upon for carpets and furnishings. The measurements given are approximate. No person in this firm's employment has the authority to make or give any representation or warranty in respect of the property.



