



Websters
estate agents

Manor Road, Twickenham, TW2 5DJ

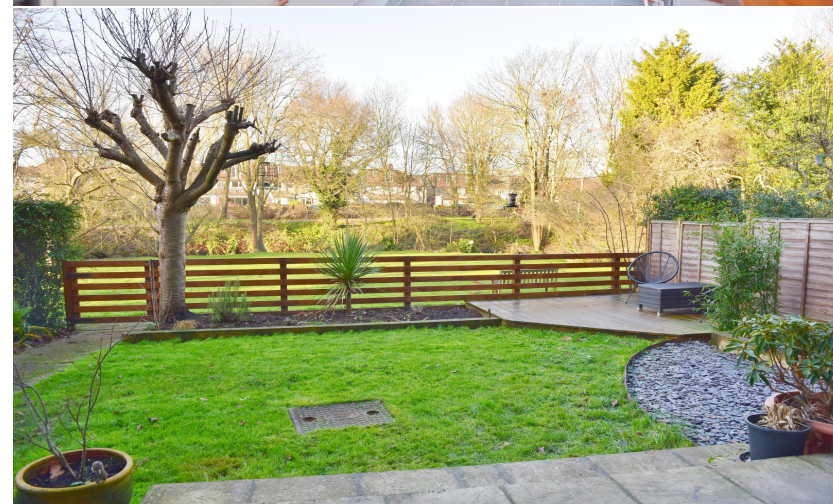
Ground Floor 2 double bedroom apartment in a highly regarded development with with a Share of Freehold, private front door, garage and garden, direct access to landscaped riverside communal gardens and a parking space. Situated at the end of a quiet residential road just 0.6 miles from Twickenham Green, local shops, bars and restaurants.

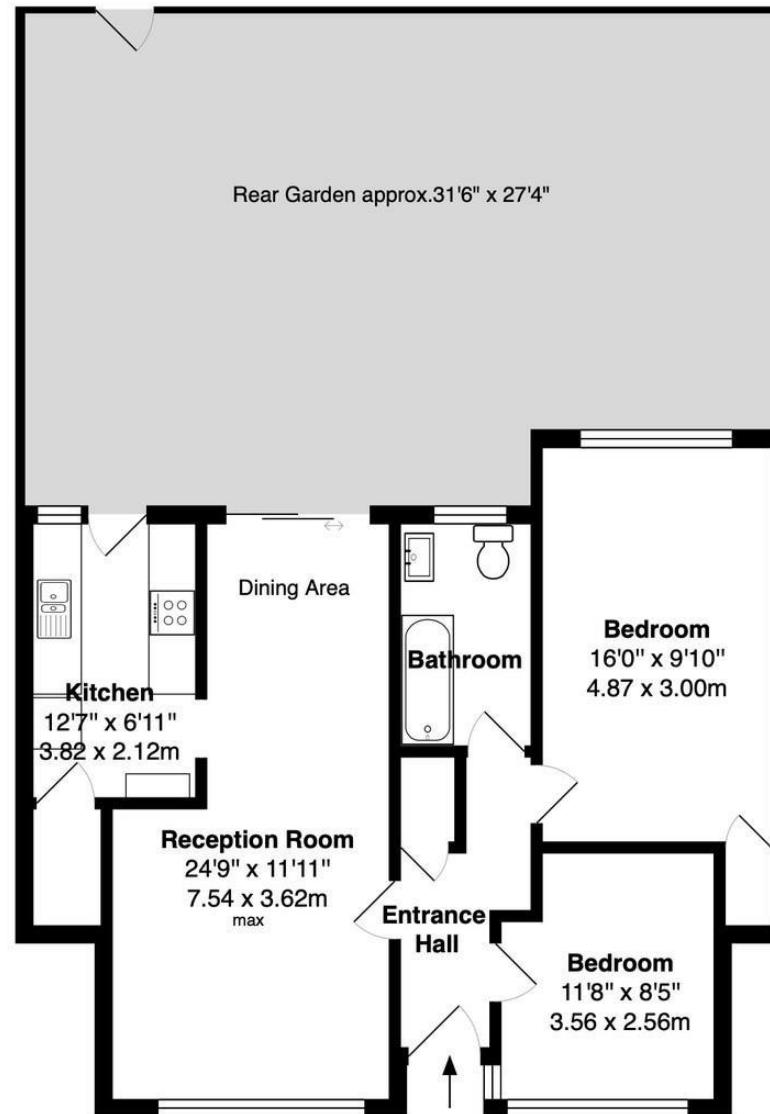
Immaculately presented to offer 732 sq ft of well proportioned living space with high specification fixtures and fittings, parquet wood flooring, double glazed windows and doors and modern decor throughout.

Entrance hallway leads to the 2 double bedrooms, storage, the luxury family bathroom and the dual aspect living room. This stunning room has space for seating and dining with access into the stylish fitted kitchen. Doors in the dining area and kitchen open onto the private garden with a patio, lawn, gated access to the communal gardens and views of the River Crane.

Located within 0.9 miles of Strawberry Hill Village and Station, Twickenham town centre and the A316 with direct access to the M3/M25 and into central London.
EPC Rating C

- Ground Floor 2 Double Bedroom Apartment
- Private Front Door and Garden
- Share of Freehold
- Riverside Communal Gardens
- 732 Sq Ft of Living Space
- Garage and Parking Space
- 0.6 Miles from Twickenham Green





TOTAL FLOOR AREA approx.= 732 Sq.Feet (68 sq.metres)

a Websters Estate Agents 36 Broad Street, Teddington, Middlesex TW11 8QY

t 020 8614 6000

e sales@mywebsters.co.uk **w** mywebsters.co.uk

Disclaimer

These particulars, whilst believed to be accurate are set out as a general outline only for guidance and do not constitute any part of an offer or contract. Intending purchasers should not rely on them as statements of representation of fact, but must satisfy themselves by inspection or otherwise as to their accuracy. We have not carried out a detailed survey nor tested the services, appliances and specific fittings. Room sizes should not be relied upon for carpets and furnishings. The measurements given are approximate. No person in this firm's employment has the authority to make or give any representation or warranty in respect of the property.

