



Websters
estate agents

Lisbon Avenue, Twickenham, TW2 5HP

Mid Terrace 3 bedroom family home with a westerly aspect 60ft garden and shared vehicular access at the rear. Situated in a popular residential area 0.3 miles from Crane Park and the River Crane and less than 0.4 miles from Waldegrave Girls School/Co-ed Sixth Form, St James Primary and Trafalgar Nursery/Infant Schools.

With vacant possession, no onward chain and in need of some modernisation. Well maintained throughout with neutral decor and double glazed windows and doors. Currently offering 797 sq ft of living space over 2 floors with potential to extend, reconfigure the layout and loft convert (subject to Planning Permission and Building Regulations).

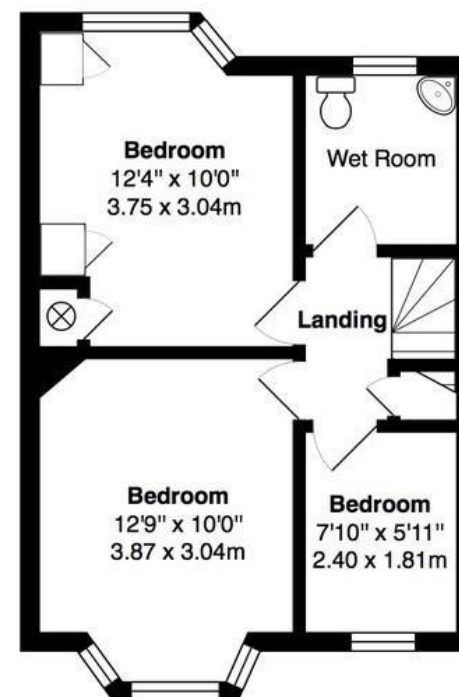
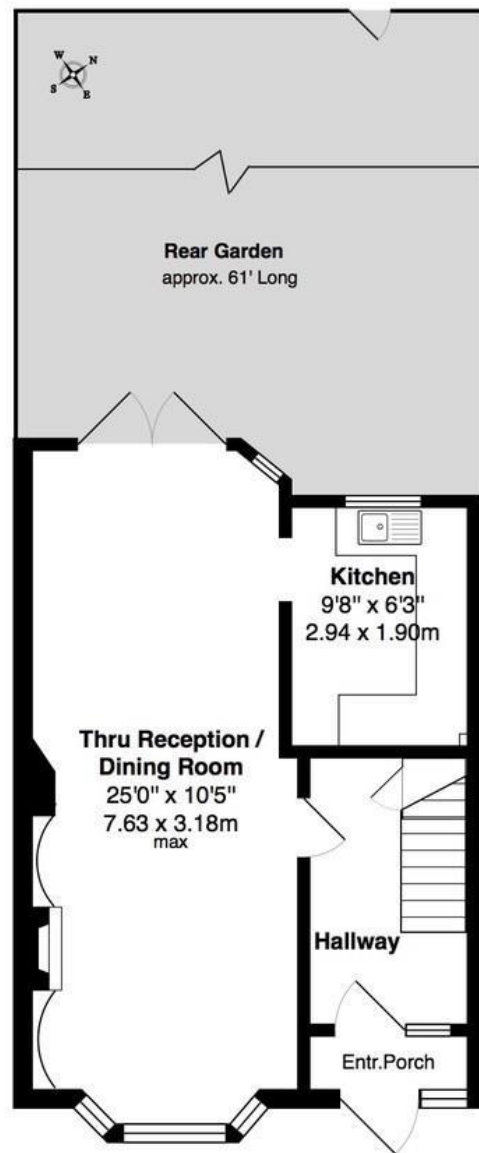
Front porch opens into the hallway with a door into the dual aspect living/dining room with access to the fitted kitchen. Double doors open onto the garden with a patio, lawn, mature planting, shed storage and gated rear access. On the first floor are 3 bedrooms, the walk in shower room and hatch access to loft storage.

Located 0.6 miles from the A316 with direct access to the M3/M25 and into central London, 0.5 miles from Twickenham Green and 0.9 miles from Strawberry Hill train station.

EPC Rating

- Mid Terrace 3 Bedroom Home
- Vacant Possession and No Chain
- Potential to Extend/Loft Convert (stpp)
- Mature Westerly Aspect 60Ft Garden
- Well Maintained Throughout
- Popular Residential Location
- Within 0.4 Miles of Popular Schools





TOTAL FLOOR AREA approx.= 797 Sq.Feet (74 sq.metres)

a Websters Estate Agents 164 Heath Road, Twickenham, Middlesex TW1 4BN

t 020 8892 3343

e sales@mywebsters.co.uk **w** mywebsters.co.uk

Disclaimer

These particulars, whilst believed to be accurate are set out as a general outline only for guidance and do not constitute any part of an offer or contract. Intending purchasers should not rely on them as statements of representation of fact, but must satisfy themselves by inspection or otherwise as to their accuracy. We have not carried out a detailed survey nor tested the services, appliances and specific fittings. Room sizes should not be relied upon for carpets and furnishings. The measurements given are approximate. No person in this firm's employment has the authority to make or give any representation or warranty in respect of the property.

