



Websters  
estate agents



# Sunnyside Road, Teddington, TW11 0RT

First and Second Floor 2 double bedroom Share of Freehold conversion apartment in an attractive Victorian semi detached property with a private front garden and own entrance. Situated in a quiet residential location just 0.4 miles from Fulwell train station and Bushy Park, 0.5 miles from Hampton Hill High Street and 0.7 miles from popular Teddington town centre shops, bars and restaurants.

Refurbished by the current owners and immaculately presented to offer 777sq ft of well proportioned living space over 2 floors with high specification fixtures, fittings and floorings, a new kitchen and bathroom, original period features and modern neutral decor throughout.

The private front door opens to the entrance hallway with stairs leading up to the first floor landing. Doors open to the south facing living room with large sash windows, wooden flooring and a feature fireplace, a double bedroom, the family bathroom and the stylish fitted kitchen. Stairs lead up to the spacious, light and airy master bedroom with velux windows and eaves storage.

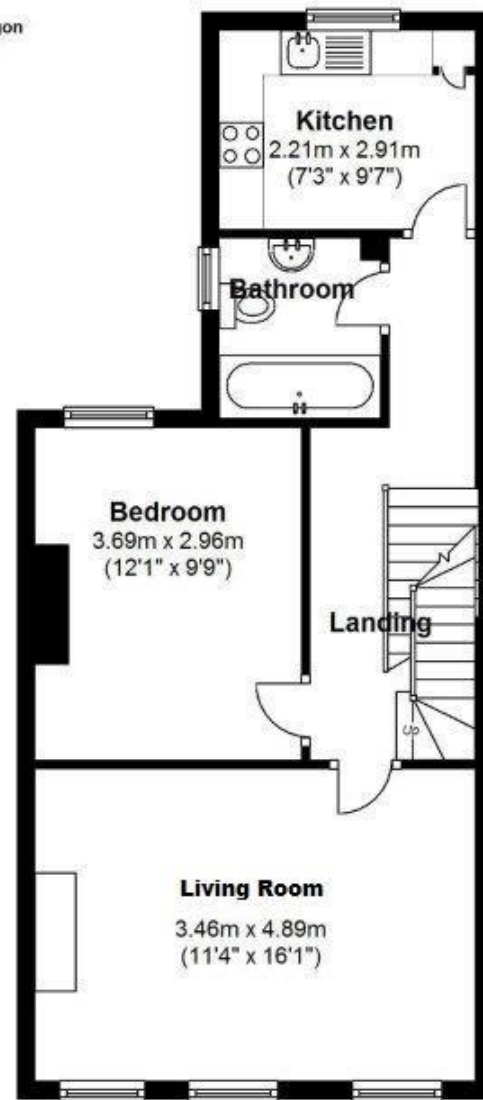
Located 0.4 miles from Stanley and St Mary's & St Peter's Primary Schools and just 0.6 miles from St James Primary and Waldegrave Girls School/Co-ed Sixth Form.

EPC Rating D

- First and Second Floor Apartment
- Share of Freehold
- 2 Double Bedrooms
- Newly Fitted Kitchen and Bathroom
- Private Front Door Entrance
- 777 Sq Ft of Living Space
- Immaculately Presented Throughout
- Within 0.7 Miles of Teddington and Hampton Hill



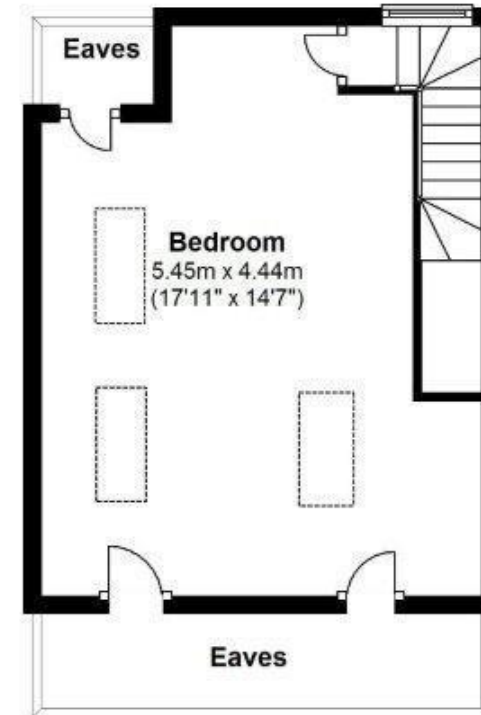
Sunnyside Road, Teddington



**First Floor**



**Ground Floor Entrance**



**Second Floor**

Total Floor Area approx. = 777 Sq. Feet (72.14sq.metres)

Copyright epcertificate.com

**a** Websters Estate Agents 36 Broad Street, Teddington, Middlesex TW11 8QY

**t** 020 8614 6000

**e** sales@mywebsters.co.uk **w** mywebsters.co.uk

**Disclaimer**

These particulars, whilst believed to be accurate are set out as a general outline only for guidance and do not constitute any part of an offer or contract. Intending purchasers should not rely on them as statements of representation of fact, but must satisfy themselves by inspection or otherwise as to their accuracy. We have not carried out a detailed survey nor tested the services, appliances and specific fittings. Room sizes should not be relied upon for carpets and furnishings. The measurements given are approximate. No person in this firm's employment has the authority to make or give any representation or warranty in respect of the property.



