



19

Yale

Websters
estate agents
0201 8882 3143
mywebsters.co.uk For Sale

P Permit
holders
only
Mon - Sat
8.30 am - 6.30 pm

Websters
estate agents

Gould Road, Twickenham, TW2 6RN

First and Second Floor 2 bedroom conversion apartment in an attractive Edwardian property with a separate private garden and a Share of Freehold. Situated in a popular residential road with residents permit parking and just 0.2 miles from Twickenham Green, local shops, bars and restaurants.

Refurbished by the current owners and tastefully presented to offer 700 sq ft of light and airy living space over 2 floors with modern fixtures and fittings, wood flooring, a recently fitted kitchen and bathroom, period features and neutral decor throughout

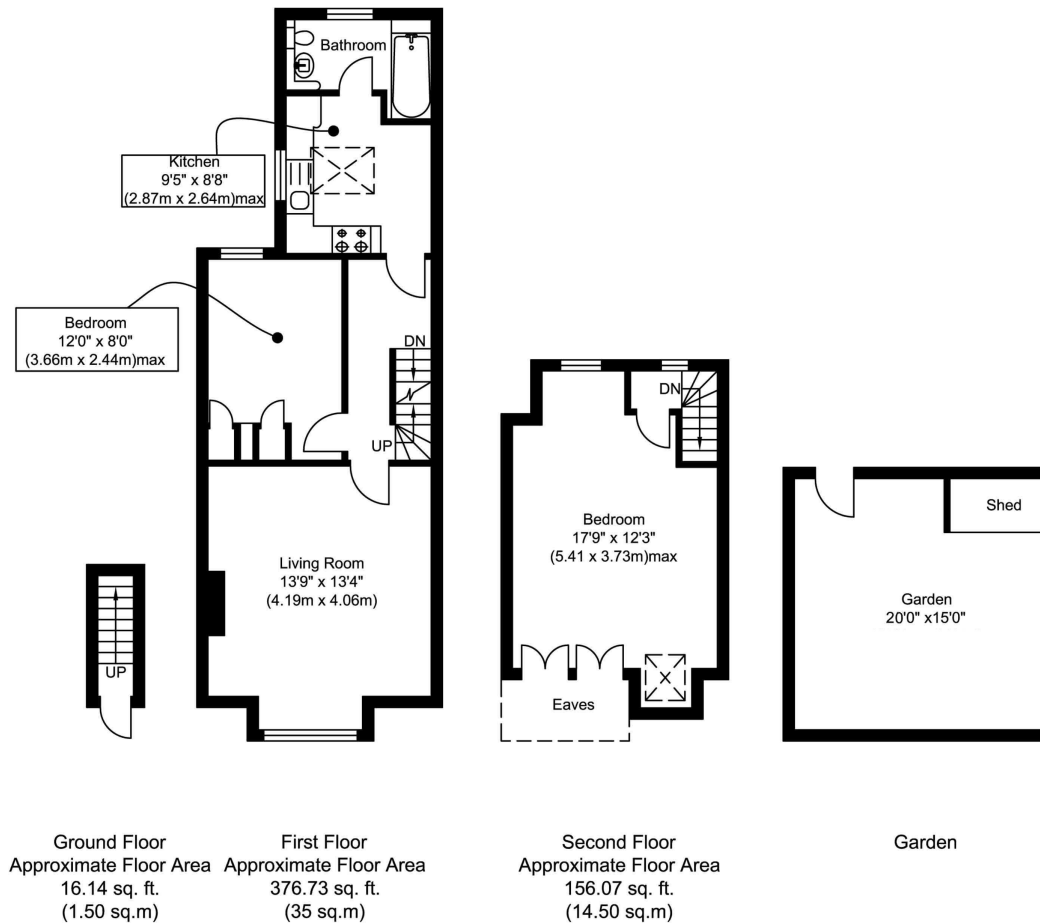
Private stairs lead up to the hallway with doors to the bay fronted living/dining room, a double bedroom and the stylish fitted kitchen and bathroom at the rear. Stairs lead up to the master bedroom with eaves storage and garden views. The secluded garden is accessed from the side of the property and has a secure gate, space for seating, planting and a storage shed.

Located 0.4 miles from Twickenham town centre, less than 0.9 miles from Strawberry Hill and Twickenham train stations and within 0.4 miles of Archdeacon and Trafalgar Nursery/Primary Schools.

EPC Rating D

- First and Second Floor Apartment
- 2 Double Bedrooms
- Private Garden at Rear
- Recently Fitted Kitchen and Bathroom
- Share of Freehold
- 700 Sq Ft of Living Space over 2 Floors
- 0.2 Miles from Twickenham Green





Total Gross Internal Area
700 sq. ft.
(65 sq. m)

Gould Road Twickenham TW2 6 RN

[a](#) Websters Estate Agents 164 Heath Road, Twickenham, Middlesex TW1 4BN [t](#) 020 8892 3343 [e](#) sales@mywebsters.co.uk [w mywebsters.co.uk](http://mywebsters.co.uk)

Disclaimer

These particulars, whilst believed to be accurate are set out as a general outline only for guidance and do not constitute any part of an offer or contract. Intending purchasers should not rely on them as statements of representation of fact, but must satisfy themselves by inspection or otherwise as to their accuracy. We have not carried out a detailed survey nor tested the services, appliances and specific fittings. Room sizes should not be relied upon for carpets and furnishings. The measurements given are approximate. No person in this firm's employment has the authority to make or give any representation or warranty in respect of the property.

