



Websters
estate agents
020 8892 3343
mywebsters.co.uk For Sale

Websters
estate agents

Meadway, Twickenham, TW2 6PF

Ground Floor 2 double bedroom Maisonette with front and rear gardens. Situated just 0.3 miles from Twickenham Green, local shops, bars and restaurants, 0.1 mile from Trafalgar Nursery, less than 0.6 miles from Trafalgar Primary, Archdeacon Primary and Waldegrave Girls School/Co-ed Sixth Form.

Tastefully presented 689 sq ft of well balanced living space with modern fixtures, fittings and floorings, double glazed windows and doors and neutral decor throughout.

Private front door opens to the hallway with access to the 2 double bedrooms, family bathroom, the fitted kitchen and the living/dining room. Doors in the kitchen and living room open directly onto the south facing, low maintenance rear garden.

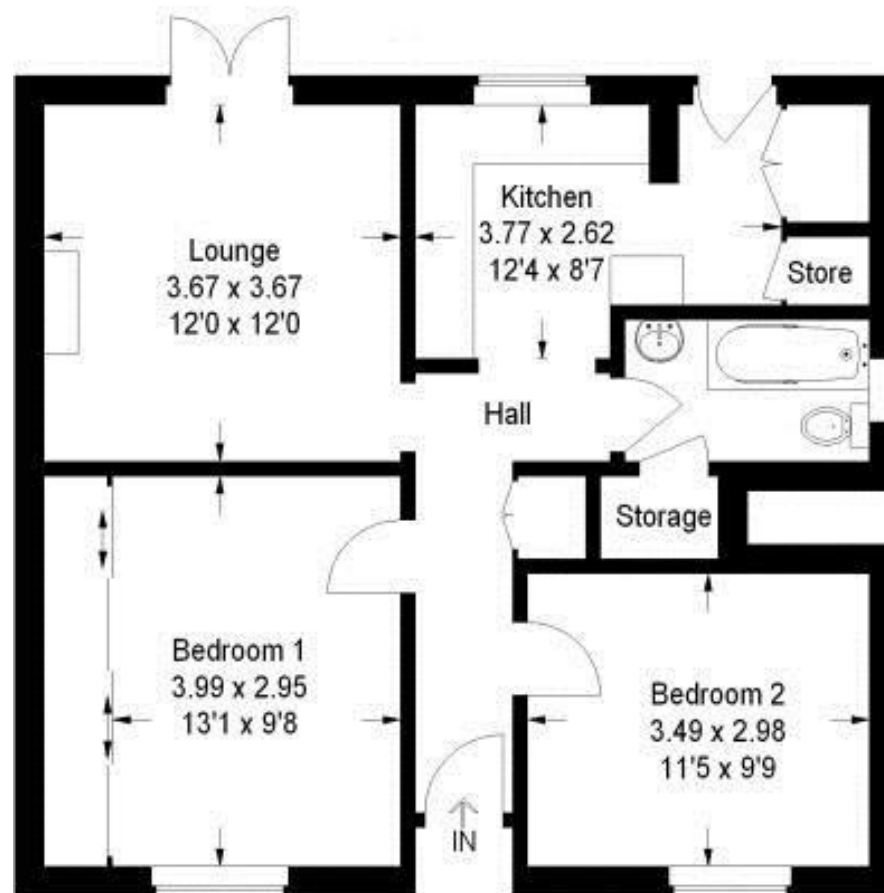
Located 0.5 miles from Whitton town centre and mainline train station, 0.7 miles from Strawberry Hill village and station and only 0.3 miles from the A316 with direct access to the M3/M25 and into central London.

EPC Rating D

- Ground Floor 2 Double Bedroom Maisonette
- Front and Rear Gardens
- Living Room and Separate Kitchen
- Modern Fixtures and Fittings
- 689 Sq Ft of Living Space
- Tastefully Presented Throughout
- 0.3 Miles from Twickenham Green
- Close to Popular Schools



Meadway, TW2 6PF



Approx . Gross Internal Area :- 64 sq mt / 689 sq ft

a Websters Estate Agents 164 Heath Road, Twickenham, Middlesex TW1 4BN

t 020 8892 3343

e sales@mywebsters.co.uk w mywebsters.co.uk

Disclaimer

These particulars, whilst believed to be accurate are set out as a general outline only for guidance and do not constitute any part of an offer or contract. Intending purchasers should not rely on them as statements of representation of fact, but must satisfy themselves by inspection or otherwise as to their accuracy. We have not carried out a detailed survey nor tested the services, appliances and specific fittings. Room sizes should not be relied upon for carpets and furnishings. The measurements given are approximate. No person in this firm's employment has the authority to make or give any representation or warranty in respect of the property.

