



Websters  
estate agents



# Tennyson Avenue, Twickenham, TW1 4QX

Mid Terrace 5 bedroom family home in a popular central Twickenham residential location. Situated 0.4 miles from Twickenham Green and town centre shops, bars and restaurants and less than 0.7 miles from Strawberry Hill and Twickenham train stations.

Extended, loft converted and in need of some modernisation with potential to create a stylish bespoke family home. Currently offering 1713 sq ft of well proportioned light and airy living space over 3 floors with double glazed windows and doors.

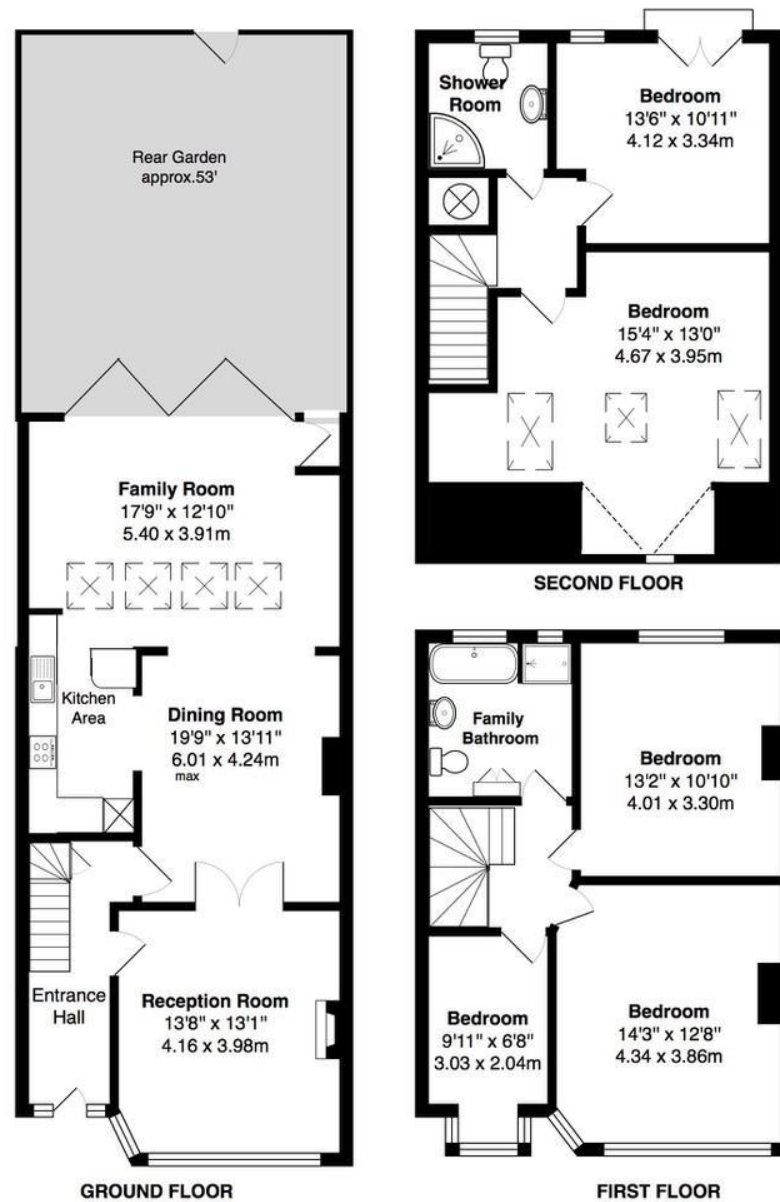
Entrance hallway leads to the bay fronted living room with double doors into the open plan kitchen/family room with a dining area, fitted kitchen and a family seating area with velux roof windows. Full width sliding doors open onto the garden with a lawn, mature planting and gated rear access. On the first floor are 3 bedrooms and the family bathroom. Stairs lead up to a shower room and 2 further bedrooms the rear with a juliet balcony overlooking the garden.

Located 0.3 miles from St Richards Reynolds Primary/Secondary, 0.6 miles from Archdeacon Primary, 0.8 miles from Orleans Primary/Secondary Schools and just 0.5 miles from Church Street and Twickenham Riverside with a towpath walk along the Thames past Marble Hill Park towards Richmond upon Thames.

EPC Rating D

- Mid Terrace Family Home
- 5 Bedrooms and 2 Bathrooms
- 1713 Sq Ft of Living over 3 Floors
- Open Plan Kitchen/Family Room
- Desirable Twickenham Location
- Close to Numerous Popular Schools
- 0.7 Miles from Strawberry Hill and Twickenham Station





TOTAL FLOOR AREA approx. = 1,713 Sq.Feet ( 161 sq.metres)

**a** Websters Estate Agents 164 Heath Road, Twickenham, Middlesex TW1 4BN

**t** 020 8892 3343

**e** sales@mywebsters.co.uk **w** mywebsters.co.uk

**Disclaimer**

These particulars, whilst believed to be accurate are set out as a general outline only for guidance and do not constitute any part of an offer or contract. Intending purchasers should not rely on them as statements of representation of fact, but must satisfy themselves by inspection or otherwise as to their accuracy. We have not carried out a detailed survey nor tested the services, appliances and specific fittings. Room sizes should not be relied upon for carpets and furnishings. The measurements given are approximate. No person in this firm's employment has the authority to make or give any representation or warranty in respect of the property.



