



Websters
estate agents

Denmark Road, Twickenham, TW2 5EN

Mid Terrace Victorian 2 double bedroom cottage in a popular residential location just 0.4 miles from Twickenham Green and local shops and 0.5 miles from Fulwell and Strawberry Hill train stations.

With vacant possession and no onward chain.

Tastefully presented with modern fixtures, fittings and flooring, charming period features, low maintenance courtyard garden and neutral decor throughout with potential to extend at the side on the ground floor (subject to Building Regulations and Planning Permission)

Front door opens into the open plan, dual aspect living space with wood flooring, a log burning stove, stylish fitted kitchen with garden views and a door to the utility room and the family bathroom. At the side is a door to the low maintenance garden with shed storage. On the first floor are 2 bedrooms both with built in cupboards and access to loft storage.

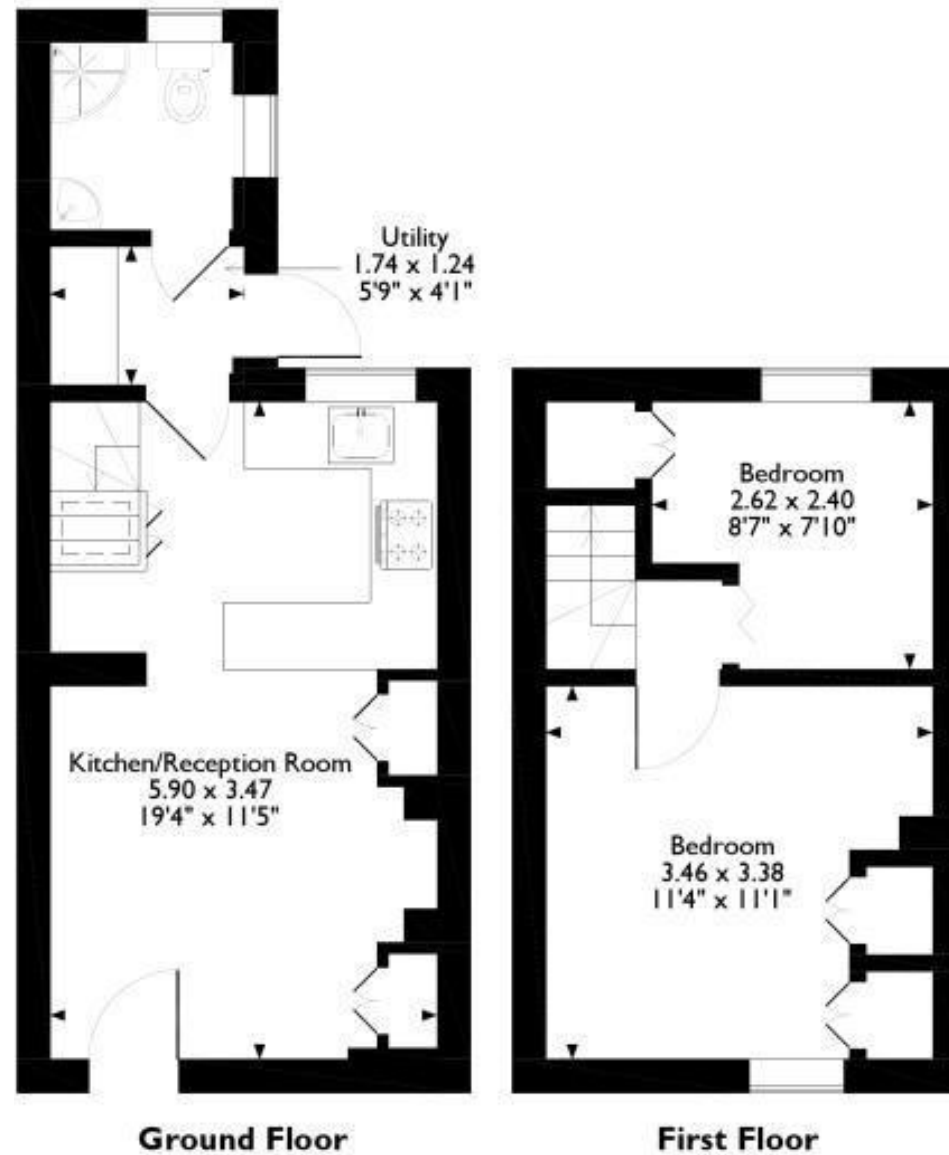
Located 0.2 miles from St James Primary, 0.4 miles from Stanley, Trafalgar and Archdeacon Primary Schools and just 0.1 mile from Waldegrave Girls School/Co-ed Sixth Form.

EPC Rating D

- Mid Terrace Victorian Cottage
- 2 Double Bedrooms
- Open Plan Living Space
- No Onward Chain
- Popular Twickenham Location
- Private Courtyard Garden
- 0.4 Miles from Twickenham Green



Denmark Road, Twickenham



a Websters Estate Agents 36 Broad Street, Teddington, Middlesex TW11 8QY

t 020 8614 6000

e sales@mywebsters.co.uk **w** mywebsters.co.uk

Disclaimer

These particulars, whilst believed to be accurate are set out as a general outline only for guidance and do not constitute any part of an offer or contract. Intending purchasers should not rely on them as statements of representation of fact, but must satisfy themselves by inspection or otherwise as to their accuracy. We have not carried out a detailed survey nor tested the services, appliances and specific fittings. Room sizes should not be relied upon for carpets and furnishings. The measurements given are approximate. No person in this firm's employment has the authority to make or give any representation or warranty in respect of the property.

