



PARSONS MEAD

Websters
estate agents

Holmesdale Road, Teddington, TW11 9LG

First Floor 2 bedroom apartment with a Share of Freehold, private garage and large communal south facing garden. Situated in the highly regarded River Roads area of Teddington just 0.2 miles from local shops and less than 0.9 miles from Teddington town centre, mainline train station and Teddington footbridge across the River Thames to the Lock/Ham Lands with towpath walks to Hampton Court Palace and Richmond.

With no onward chain

Offering 551 sq ft of well proportioned living space with double glazed windows, neutral decor and potential to modernise internally.

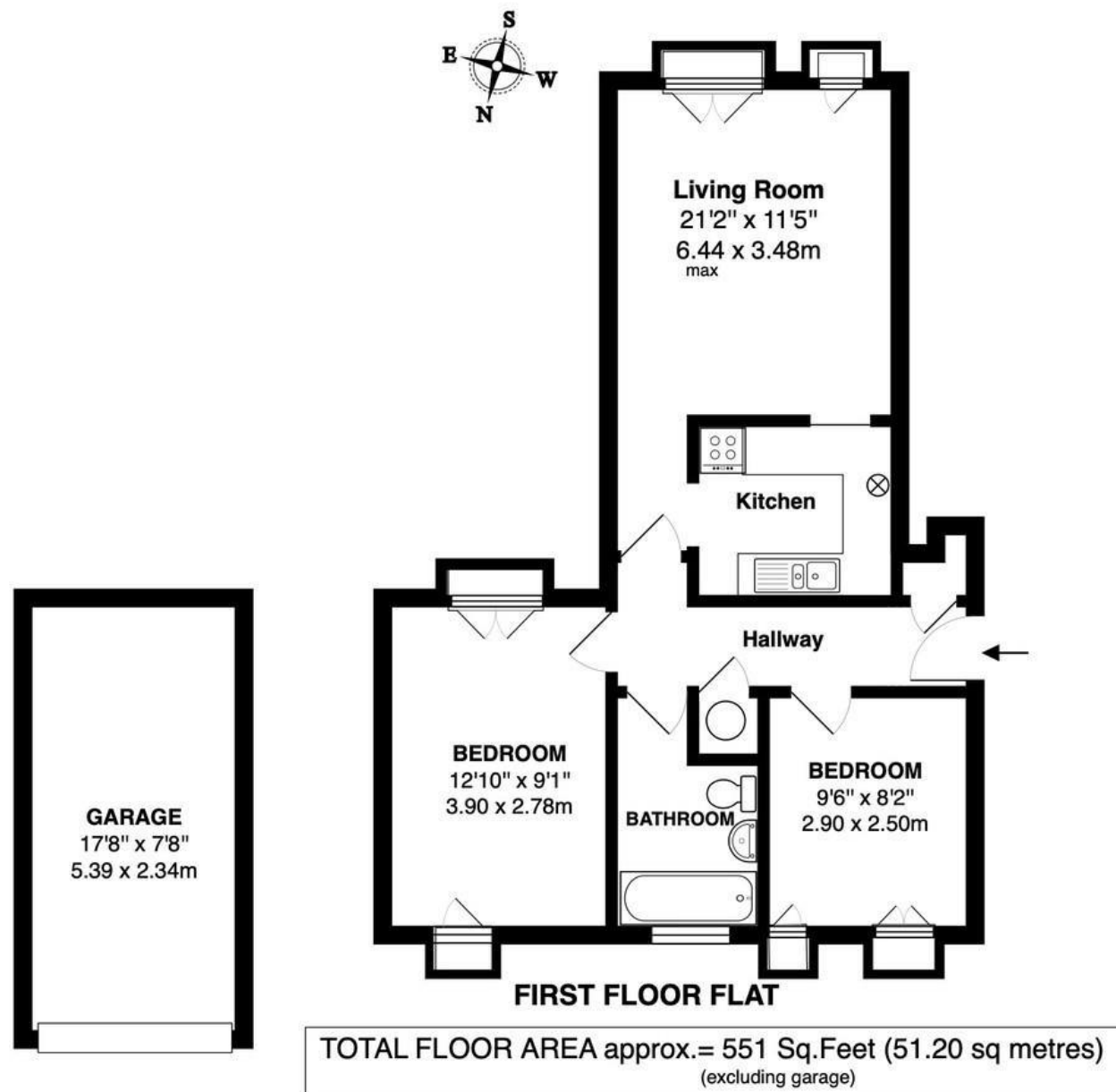
Entrance hallway leads to the 2 bedrooms, the bathroom and the living room with space for seating and dining, access to the kitchen area and large windows with stunning garden views. At the front of the property is limited residents parking and the garages with secure gated access at the side to the fully maintained communal garden with a large lawn and mature planting..

Located 0.5 miles from Bushy Park, Hampton Wick Infants, St John the Baptist, Sacred Heart and Collis Primary Schools.

EPC Rating D

- First Floor 2 Bedroom Apartment
- Private Garage and Communal Gardens
- Vacant with No Chain
- Desirable River Roads Location
- Share of Freehold
- 0.5 Miles from Bushy Park
- 0.9 Miles from Teddington Town and Station





a Websters Estate Agents 36 Broad Street, Teddington, Middlesex TW11 8QY

t 020 8614 6000

e sales@mywebsters.co.uk **w** mywebsters.co.uk

Disclaimer

These particulars, whilst believed to be accurate are set out as a general outline only for guidance and do not constitute any part of an offer or contract. Intending purchasers should not rely on them as statements of representation of fact, but must satisfy themselves by inspection or otherwise as to their accuracy. We have not carried out a detailed survey nor tested the services, appliances and specific fittings. Room sizes should not be relied upon for carpets and furnishings. The measurements given are approximate. No person in this firm's employment has the authority to make or give any representation or warranty in respect of the property.

