



Websters  
estate agents



# Knights Place, Twickenham, TW2 6QT

First Floor 2 double bedroom Maisonette in a private modern development with residents parking. Situated less than 0.1 mile from Twickenham Green, local shops, bars and restaurants and 0.5 miles from Twickenham Town Centre.

Larger than average, tastefully presented and newly redecorated throughout to offer an impressive 915 sq ft of well proportioned living space with high specification fixtures, fittings and floorings and double glazed windows.

Private front door entrance leads upstairs to the open plan living room/kitchen with a stylish fitted kitchen, storage and roof lights. The inner hallway leads to the bathroom, storage and the 2 double bedrooms both with built in wardrobes/storage and the master with an en-suite shower room.

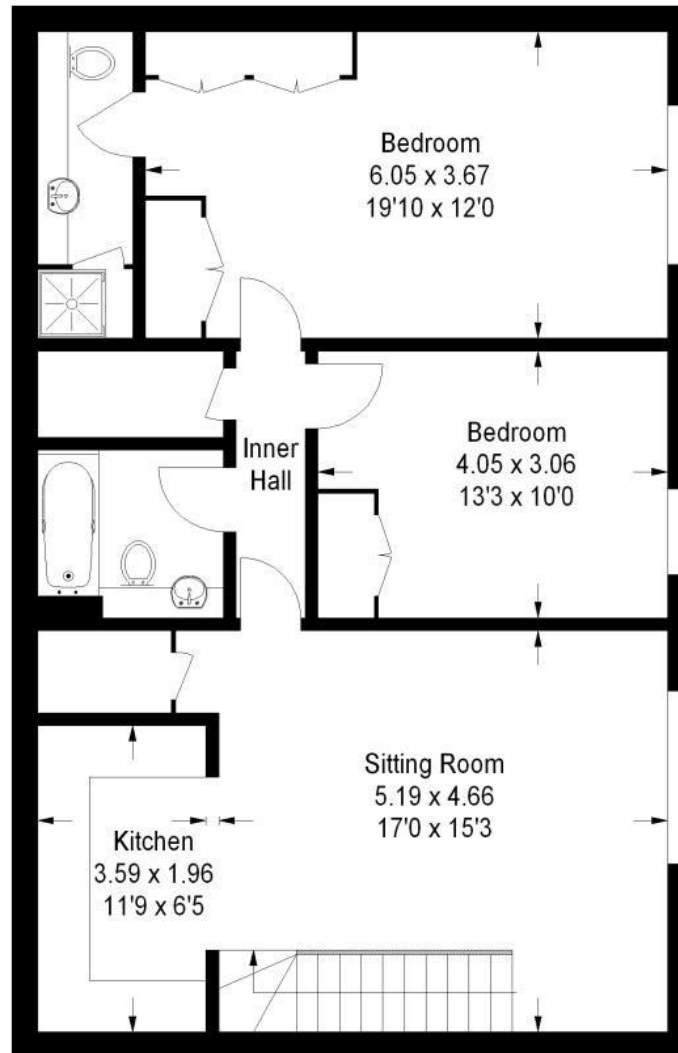
Located 0.6 miles from Strawberry Hill Village and train station and 0.9 miles from Twickenham mainline station, Chuch Street and Twickenham Riverside with a towpath walk through Marble Hill Park to Richmond upon Thames.

EPC Rating C

- Large First Floor Maisonette
- 2 Double Bedrooms and 2 Bathrooms
- 915 Sq Ft of Living Space
- Private Modern Development
- Allocated Parking Space
- Newly Decorated Throughout
- 0.1 Mile from Twickenham Green



# Knights Place



Approx . Gross Internal Area :- 85 sq mt / 915 sq ft

**a** Websters Estate Agents 36 Broad Street, Teddington, Middlesex TW11 8QY

**t** 020 8614 6000

**e** [sales@mywebsters.co.uk](mailto:sales@mywebsters.co.uk) **w** [mywebsters.co.uk](http://mywebsters.co.uk)

**Disclaimer**

These particulars, whilst believed to be accurate are set out as a general outline only for guidance and do not constitute any part of an offer or contract. Intending purchasers should not rely on them as statements of representation of fact, but must satisfy themselves by inspection or otherwise as to their accuracy. We have not carried out a detailed survey nor tested the services, appliances and specific fittings. Room sizes should not be relied upon for carpets and furnishings. The measurements given are approximate. No person in this firm's employment has the authority to make or give any representation or warranty in respect of the property.



