



Websters  
estate agents



# Staines Road, Twickenham, TW2 5AY

Semi Detached New Build 4/5 bedroom family home with a landscaped front garden, gated off street parking and a south facing garden at the rear. Situated just 0.1 mile from Waldegrave Girls School/Co-ed Sixth Form, 0.3 miles from Trafalgar Primary and less than 0.6 miles from St James, Stanley and Archdeacon Primary Schools.

Brand new high specification home offering 2142 sq ft of impressive living space over 4 floors with stylish contemporary fixtures and fittings, oak flooring on the lower floors, large double glazed windows and doors, energy efficient heating (some underfloor), led lighting and tasteful neutral decor throughout.

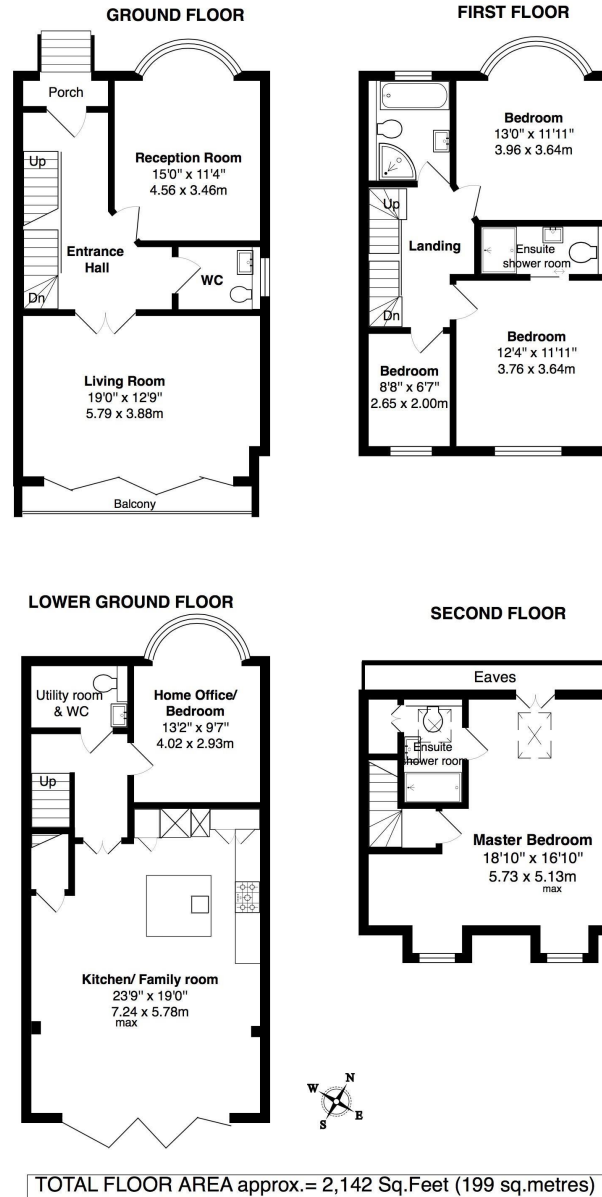
Ground floor entrance leads to the bay fronted living room, a w.c and the family room at the rear with full height folding doors opening onto the sun terrace. Stairs lead down to the utility room/w.c, home office/bedroom 5 and the stunning open plan kitchen/family room. This light filled room has a bespoke fitted kitchen with quartz worktops and central island/breakfast bar, Siemens integrated appliances, induction hob, American style fridge freezer and folding doors opening onto the lower patio. Steps lead up the the garden with a patio, lawn, side access and secure gated rear access to the parking area. On the first floor are 3 bedrooms, one with an en-suite shower room, the family bathroom and stairs up to the master bedroom suite with an en-suite shower room, eaves storage and garden views.

Located 0.4 miles from Twickenham Green, local shops bars and restaurants and only 0.6 miles from Fulwell and Strawberry Hill train stations.

EPC Rating tbc

- Semi Detached New Build Home
- 4/5 Bedrooms and 3 Bathrooms
- Impressive High Specification
- South Facing Garden
- Gated Off Street Parking
- 2142 Sq Ft of Living Space over 4 Floors
- 0.4 Miles from Twickenham Green
- Close to Numerous Popular Schools





**a** Websters Estate Agents 164 Heath Road, Twickenham, Middlesex TW1 4BN **t** 020 8892 3343 **e** sales@mywebsters.co.uk **w** mywebsters.co.uk

**Disclaimer**

These particulars, whilst believed to be accurate are set out as a general outline only for guidance and do not constitute any part of an offer or contract. Intending purchasers should not rely on them as statements of representation of fact, but must satisfy themselves by inspection or otherwise as to their accuracy. We have not carried out a detailed survey nor tested the services, appliances and specific fittings. Room sizes should not be relied upon for carpets and furnishings. The measurements given are approximate. No person in this firm's employment has the authority to make or give any representation or warranty in respect of the property.



