



Websters
estate agents

Blyth Close, Twickenham, TW1 1AZ

First Floor 2 bedroom apartment in a purpose built development with secure entry phone access and an allocated parking space. Situated in a quiet residential location only 0.3 miles from Twickenham mainline train station and the A316 with direct access to the M3/M25 and into Central London.

Tastefully presented to offer 514 sq ft of light and airy, well proportioned living space with modern fixtures, fittings and flooring, large double glazed windows and pleasing neutral decor throughout.

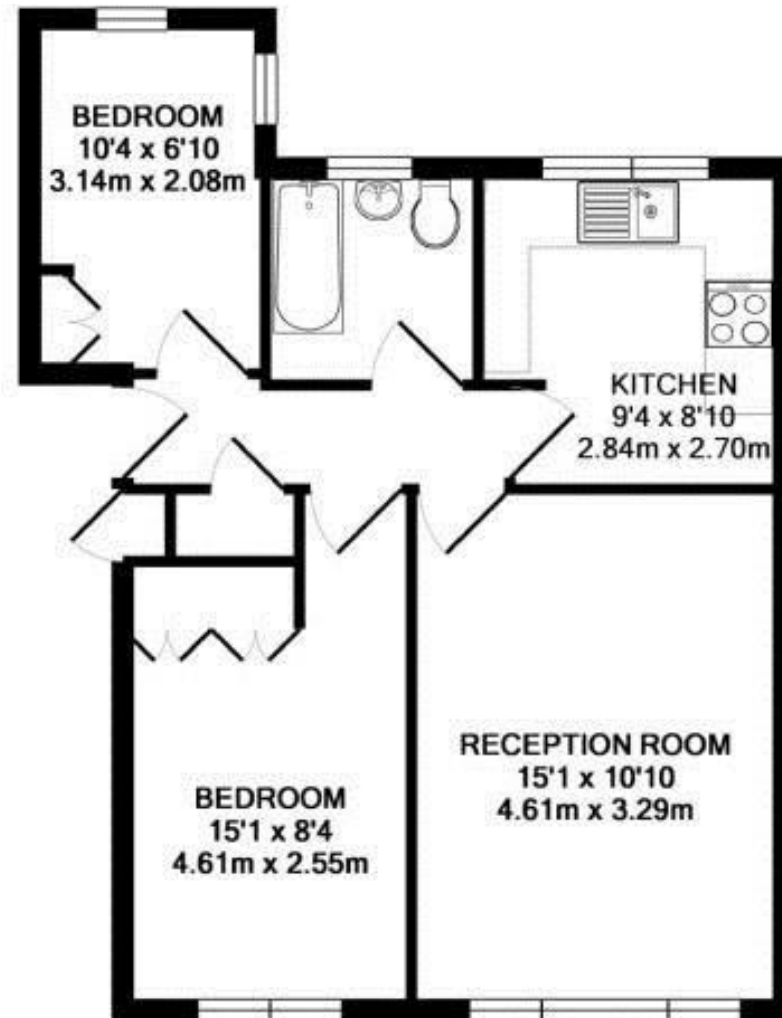
Entrance hallway leads to built in storage, 2 bedrooms with built in wardrobes, the bathroom, the stylish fitted kitchen and the living room with space for seating and dining.

Located 0.4 miles from Twickenham town centre shops, bars and restaurants and 0.7 miles from Church Street and Twickenham Riverside with a towpath walk leading past Marble Hill Park to Richmond upon Thames.

EPC Rating C

- First Floor 2 Bedroom Apartment
- Allocated Parking Space
- Quiet Residential Location
- Living Room and Separate Kitchen
- Tastefully Presented Throughout
- Well Proportioned Living Space
- 0.3 Miles from Twickenham Train Station





BLYTH CLOSE, TW1
TOTAL APPROX. FLOOR AREA 514 SQ.FT. (47.7 SQ.M.)

a Websters Estate Agents 36 Broad Street, Teddington, Middlesex TW11 8QY

t 020 8614 6000

e sales@mywebsters.co.uk **w** mywebsters.co.uk

Disclaimer

These particulars, whilst believed to be accurate are set out as a general outline only for guidance and do not constitute any part of an offer or contract. Intending purchasers should not rely on them as statements of representation of fact, but must satisfy themselves by inspection or otherwise as to their accuracy. We have not carried out a detailed survey nor tested the services, appliances and specific fittings. Room sizes should not be relied upon for carpets and furnishings. The measurements given are approximate. No person in this firm's employment has the authority to make or give any representation or warranty in respect of the property.

