



Websters
estate agents

Ormond Drive, Hampton, TW12 2TP

Semi Detached 4 bedroom family home with driveway parking and a fabulous 120 ft+ rear garden. Situated in the highly regarded 'Ormonds' residential area 0.3 miles from Carlisle Infant School and less than 0.7 miles from Hampton Hill Junior, Lady Eleanor Hollis and Hampton Boys Schools.

Extended at the rear and loft converted to offer 1456 sq ft of well proportioned living space over 3 floors with modern fixtures and fittings, double glazed windows, energy efficient heating and lighting and pleasing neutral decor.

Entrance hallway leads to a w.c, the bay fronted living room with wood flooring, built in storage and plantation shutters and the open plan kitchen/family room at the rear. This stunning light filled room has a stylish 'Callaghan Interiors' kitchen, underfloor heating, roof lights, space for family seating and dining and a door into the large utility/storage room at the side. Two sets of doors open directly onto the garden with a patio, lawn, beautiful mature planting, shed storage and secure gated side access. On the first floor are 3 double bedrooms and the luxury family bathroom with stairs leading up to a further double bedroom with an en-suite shower room and walk-in eaves storage.

Located just 0.4 miles from Hampton Hill High Street, Bushy Park and the Hampton Pool and only 0.6 miles from Hampton train station and village shops.
EPC Rating D

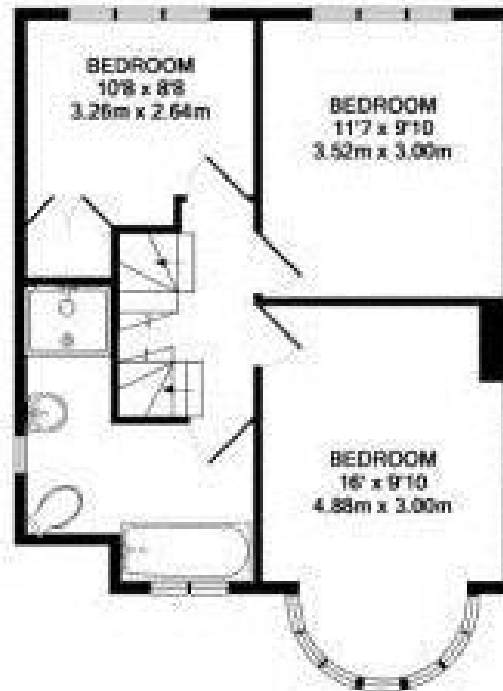
- Semi Detached 4 Double Bedroom Home
- Desirable Hampton 'Ormonds' Location
- 1456 Sq Ft of Living Space over 3 Floors
- Fabulous 120Ft + Rear Garden
- Living Room and Kitchen/Family/Dining Room
- 0.6 Miles from Hampton Train Station
- Close to Numerous Popular Schools





GROUND FLOOR
APPROX. FLOOR
AREA 717 SQ. FT.
(66.4 SQ. M.)

ORMOND DRIVE TW12
TOTAL APPROX. FLOOR AREA 1455 SQ. FT. (135.2 SQ. M.)



1ST FLOOR
APPROX. FLOOR
AREA 481 SQ. FT.
(44.7 SQ. M.)



2ND FLOOR
APPROX. FLOOR
AREA 257 SQ. FT.
(23.9 SQ. M.)

a Websters Estate Agents 36 Broad Street, Teddington, Middlesex TW11 8QY

t 020 8614 6000

e sales@mywebsters.co.uk **w** mywebsters.co.uk

Disclaimer

These particulars, whilst believed to be accurate are set out as a general outline only for guidance and do not constitute any part of an offer or contract. Intending purchasers should not rely on them as statements of representation of fact, but must satisfy themselves by inspection or otherwise as to their accuracy. We have not carried out a detailed survey nor tested the services, appliances and specific fittings. Room sizes should not be relied upon for carpets and furnishings. The measurements given are approximate. No person in this firm's employment has the authority to make or give any representation or warranty in respect of the property.

