



Websters  
estate agents



# Copthall Gardens, Twickenham, TW1 4HH

Mid Terrace 3 bedroom family home in a highly desirable Twickenham location with a west facing garden. Situated 100 metres from Sir Richard Reynolds Catholic College, 0.4 miles from St Marys Primary and 0.7 miles from Archdeacon and Orleans Primary and Orleans Park Secondary/Sixth Form.

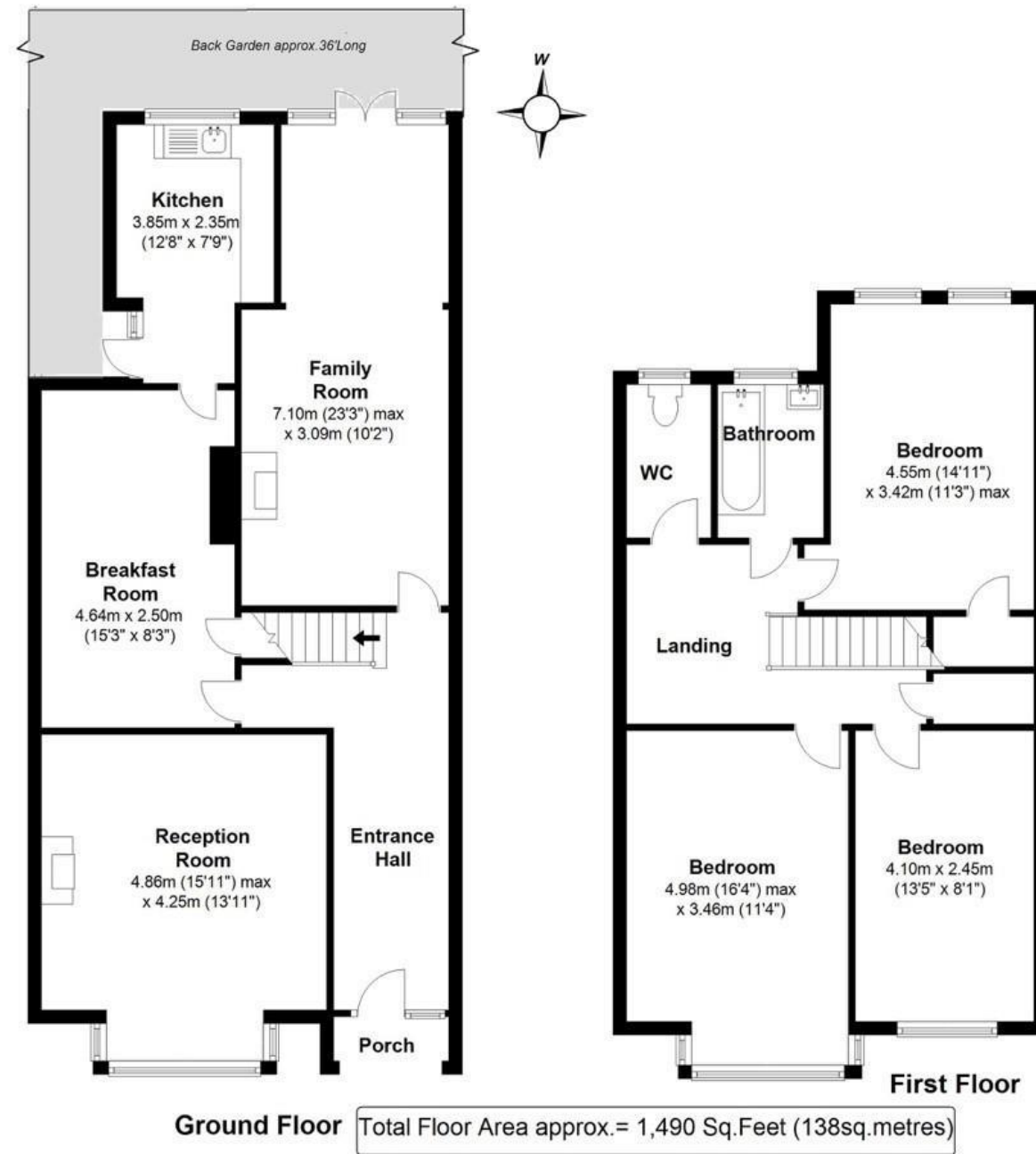
With vacant possession and no onward chain, this substantial family home offers 1490 sq ft of living space over 2 floors with some original period windows and internal features. Extended at the rear and in need of modernisation with potential to loft convert and re configure the layout to create a bespoke family home (subject to Planning Permission and Building Regulations).

The original covered porchway opens into the entrance hallway with doors to the bay fronted living room, the dining room with access to the separate kitchen and the family room at the rear. This spacious room has large windows and doors directly onto the garden with a patio, lawn area and mature planting. On the first floor are 3 bedrooms, the bathroom, separate w.c and access to loft storage.

Located less than 0.2 miles from High Street shops, bars and restaurants and 0.4 miles from Twickenham Green, Twickenham mainline train station, Church Street and the River Thames with a towpath walk past Marble Hill Park to Richmond.  
EPC Rating D

- Mid Terrace Edwardian Family Home
- Vacant Possession and No Chain
- Highly Regarded Twickenham Location
- Potential to Extend/Loft Convert (stpp)
- 1490 sq ft of Living Space over 2 Floors
- 0.4 Miles from Twickenham Station
- Within 0.7 Miles of Numerous Popular Schools





**a** Websters Estate Agents 164 Heath Road, Twickenham, Middlesex TW1 4BN

**t** 020 8892 3343

**e** sales@mywebsters.co.uk **w** mywebsters.co.uk

**Disclaimer**

These particulars, whilst believed to be accurate are set out as a general outline only for guidance and do not constitute any part of an offer or contract. Intending purchasers should not rely on them as statements of representation of fact, but must satisfy themselves by inspection or otherwise as to their accuracy. We have not carried out a detailed survey nor tested the services, appliances and specific fittings. Room sizes should not be relied upon for carpets and furnishings. The measurements given are approximate. No person in this firm's employment has the authority to make or give any representation or warranty in respect of the property.



