



ALBION
COTTAGES

17

Websters
estate agents

Latimer Road, Teddington, TW11 8QA

End of Terrace 2 double bedroom Victorian Cottage in a popular residential cul-de-sac. Situated 0.3 miles from Teddington town centre, 0.1 mile from St Mary's and St Peter's Primary, 0.6 miles from Stanley Primary and less than 0.9 miles from Collis and St James Primary Schools.

Extended at the rear to offer 695 sq ft of living space over 2 floors with potential to further extend (subject to Planning Permission and Building Regulations). Tastefully presented with high specification fixtures, fittings and flooring, pleasing neutral decor, double glazed sash windows at the front and charming period features.

Front door opens into the living room with wood flooring, a feature fireplace and access into the stylish fitted kitchen/dining room. An internal lobby leads to the utility area and the large family bathroom at the rear. A door to the side opens onto the attractive, low maintenance garden with high fences and shed storage. On the first floor are 2 double bedrooms and access to loft storage.

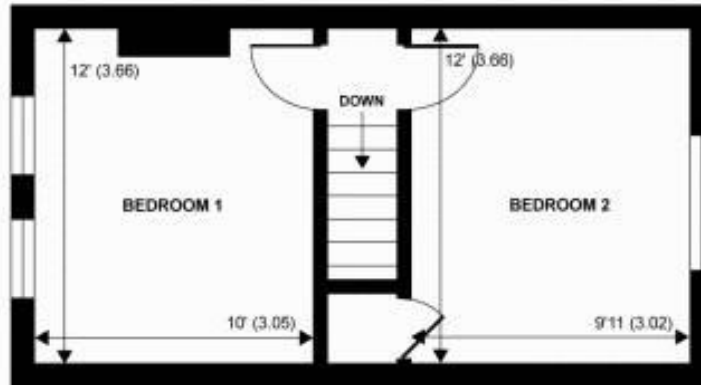
Located 0.5 miles from Teddington mainline train station and only 0.6 miles from beautiful Bushy Park.

EPC Rating E

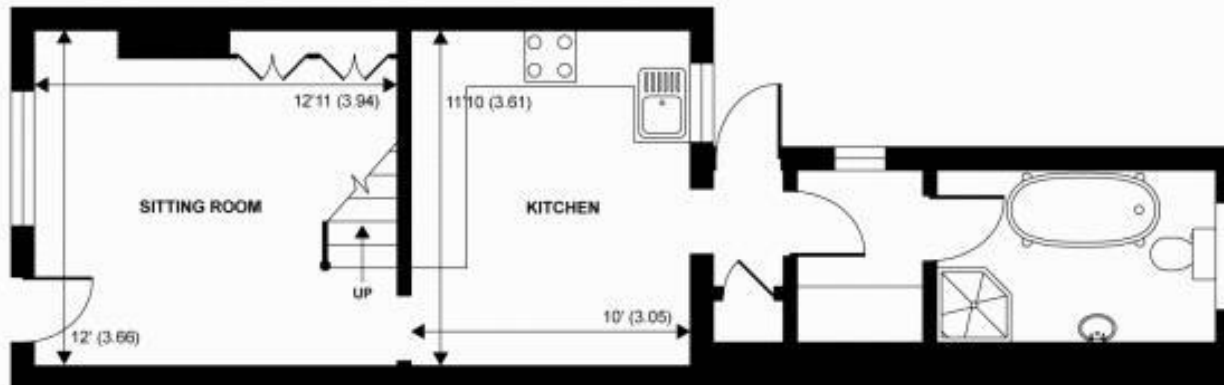
- End Of Terrace Victorian Cottage
- 2 Double Bedrooms
- Popular Cul-de-Sac Location
- Beautifully Presented Throughout
- Living Room and Separate Kitchen/Dining Room
- Low Maintenance Rear Garden
- Potential to Extend (stpp)
- 0.5 Miles from Teddington Train Station



15 Latimer Road, Teddington



FIRST FLOOR
abt 343 SQFT (EXTERNAL)



GROUND FLOOR
abt 507 SQFT (EXTERNAL)

Approx Gross Internal Area 695 sqft 64.5 sqm

a Websters Estate Agents 36 Broad Street, Teddington, Middlesex TW11 8QY

t 020 8614 6000

e sales@mywebsters.co.uk **w** mywebsters.co.uk

Disclaimer

These particulars, whilst believed to be accurate are set out as a general outline only for guidance and do not constitute any part of an offer or contract. Intending purchasers should not rely on them as statements of representation of fact, but must satisfy themselves by inspection or otherwise as to their accuracy. We have not carried out a detailed survey nor tested the services, appliances and specific fittings. Room sizes should not be relied upon for carpets and furnishings. The measurements given are approximate. No person in this firm's employment has the authority to make or give any representation or warranty in respect of the property.

