



Websters
estate agents

Camac Road, Twickenham, TW2 6NY

First and Second Floor 2 bedroom conversion apartment with a Share of Freehold and an outside storage area in a quiet cul-de-sac location 0.1 mile from Twickenham Green, local shops and excellent bus routes and only 0.5 miles from Twickenham town centre.

Loft converted and refurbished by the current owners to an impressive standard to offer 670sq ft of well proportioned living space over 2 floors with high specification fixtures, fittings and flooring, double glazed windows, a feature staircase, charming period features and pleasing neutral decor.

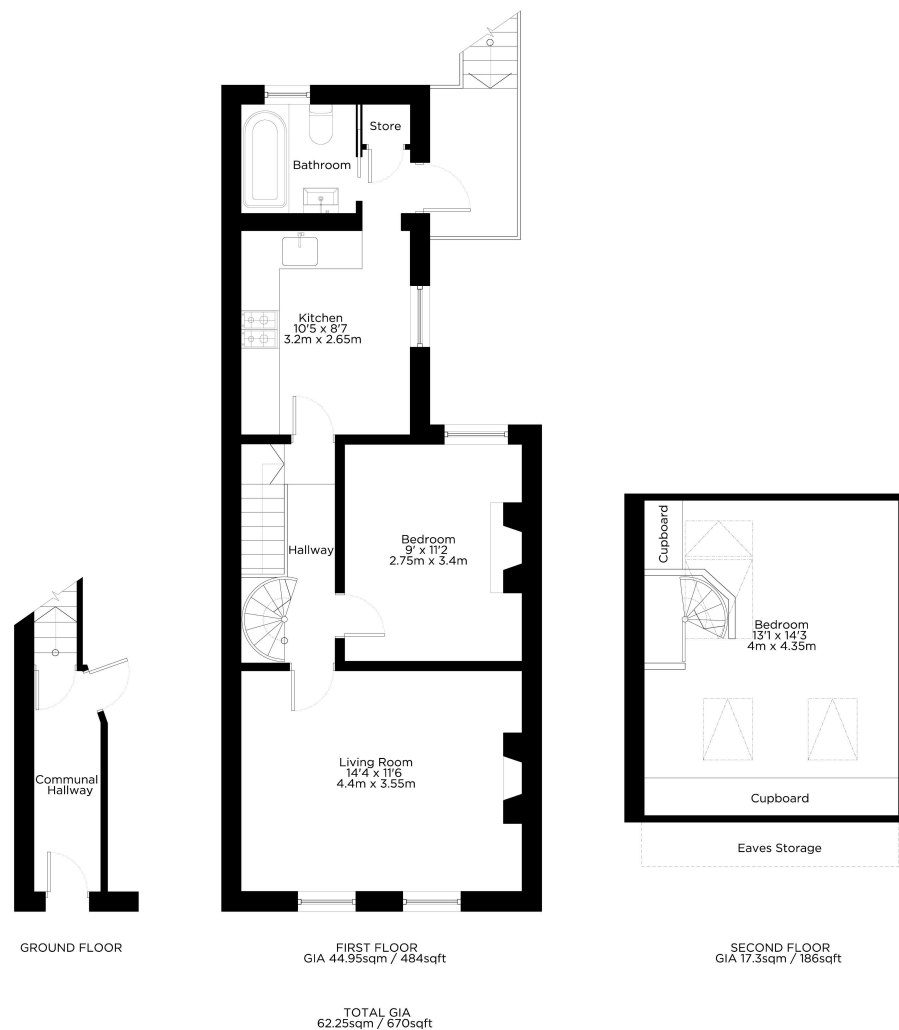
Communal entrance access leads to the front door with stairs up to the hallway and doors to the spacious living room, double bedroom and the fitted kitchen/dining room. A lobby at the rear opens to the luxury bathroom, storage and the external staircase leading to the private garden area with storage. A stylish spiral staircase in the hallway leads up to the second bedroom with built in cupboards, a velux juliet balcony and eaves storage.

With unrestricted road parking and located 0.2 miles from Trafalgar and Archdeacon Primary Schools, 0.6 miles from Strawberry Hill Station and less than 1 mile from Twickenham mainline train station, Church street shops, bars and restaurants and the River Thames.

EPC Rating

- First and Second Floor Apartment
- 2 Double Bedrooms and Luxury Bathroom
- Refurbished and Loft Converted
- High Specification Throughout
- Spacious Living Room and Separate Kitchen
- Highly Regarded Residential Location
- 0.1 Mile from Twickenham Green





a Websters Estate Agents 164 Heath Road, Twickenham, Middlesex TW1 4BN

t 020 8892 3343

e sales@mywebsters.co.uk **w** mywebsters.co.uk

Disclaimer

These particulars, whilst believed to be accurate are set out as a general outline only for guidance and do not constitute any part of an offer or contract. Intending purchasers should not rely on them as statements of representation of fact, but must satisfy themselves by inspection or otherwise as to their accuracy. We have not carried out a detailed survey nor tested the services, appliances and specific fittings. Room sizes should not be relied upon for carpets and furnishings. The measurements given are approximate. No person in this firm's employment has the authority to make or give any representation or warranty in respect of the property.

