



Websters
estate agents

Heath Road, Twickenham, TW1 4BN

Ground Floor 1 bedroom apartment with a private west facing garden in a central Twickenham location just 0.2 miles from Twickenham Green, local shops, bars and restaurants and 0.7 miles from Strawberry Hill and Twickenham mainline train stations.

Tastefully presented 366 sq ft of well proportioned living space with modern fixtures, fittings and floorings, pleasing decor and large double glazed doors in 2 rooms opening onto the low maintenance walled garden.

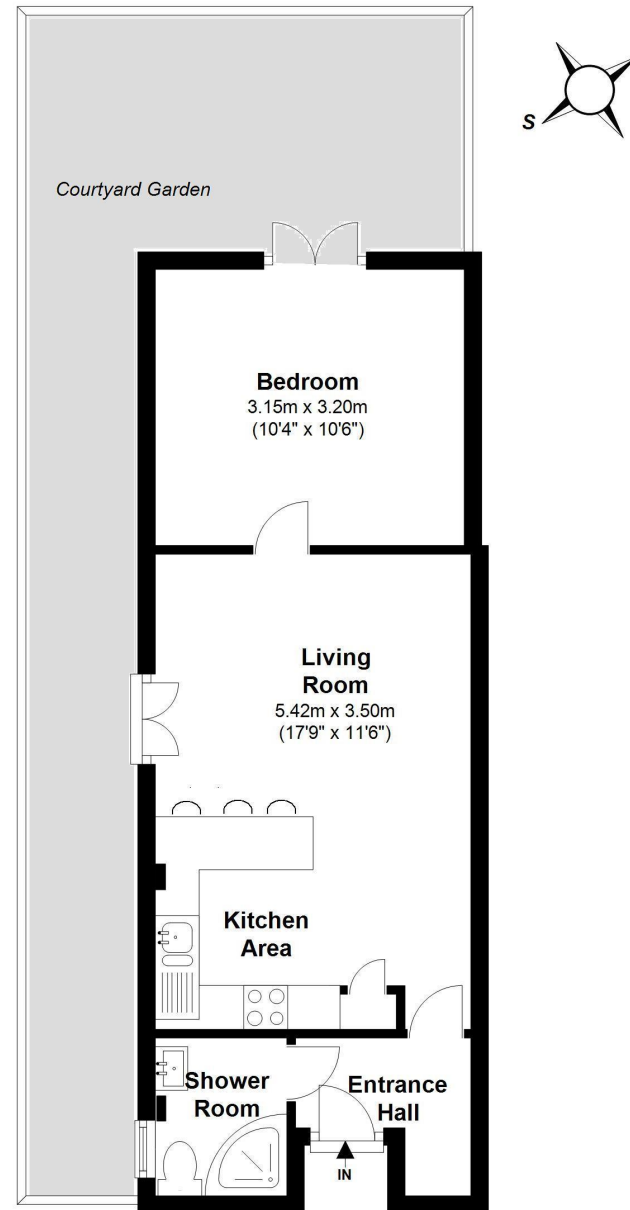
With entry phone access through well maintained communal areas. Front door opens to the entrance hallway with doors to the shower room and into the open plan living room. This light filled room has a stylish integrated kitchen with granite worktops, a breakfast bar, space for seating, doors onto the garden and a door into the large double bedroom at the rear.

Located 0.4 miles from Twickenham town centre, Church Street and the River Thames with towpath walks to Richmond upon Thames.

EPC Rating D

- Ground Floor 1 Bedroom Apartment
- Private West Facing Walled Garden
- Secure Entry Phone Access to Communal Areas
- Modern Fixtures, Fittings and Flooring
- Popular Twickenham Location
- Double Glazed Doors onto Garden
- 0.2 Miles from Twickenham Green





Ground Floor Flat

Total Floor Area approx.= 366 Sq.Feet (34sq.metres)

a Websters Estate Agents 164 Heath Road, Twickenham, Middlesex TW1 4BN **t** 020 8892 3343 **e** sales@mywebsters.co.uk **w** mywebsters.co.uk

Disclaimer

These particulars, whilst believed to be accurate are set out as a general outline only for guidance and do not constitute any part of an offer or contract. Intending purchasers should not rely on them as statements of representation of fact, but must satisfy themselves by inspection or otherwise as to their accuracy. We have not carried out a detailed survey nor tested the services, appliances and specific fittings. Room sizes should not be relied upon for carpets and furnishings. The measurements given are approximate. No person in this firm's employment has the authority to make or give any representation or warranty in respect of the property.

