



Websters  
estate agents



# Norcutt Road, Twickenham, TW2 6SR

Attractive mid terrace 2 bedroom cottage in a highly regarded location just 300 metres from Twickenham Green, shops and restaurants.

Immaculately presented throughout with period charm, character and light neutral décor, this pleasing home offers 672sq ft of living space over 2 floors with potential to extend at the side/rear and loft convert (subject to planning permission).

Front door opens into the living room with pine flooring, shutters and a wood burning gas stove. Doorway leads to the stairs and into the dining room with open access into the superb modern fitted kitchen and a door directly onto the courtyard garden.

Upstairs are 2 bedrooms and the luxury family bathroom.

Located in a quiet road with unrestricted parking just 700 metres from Twickenham mainline and Strawberry Hill train stations.

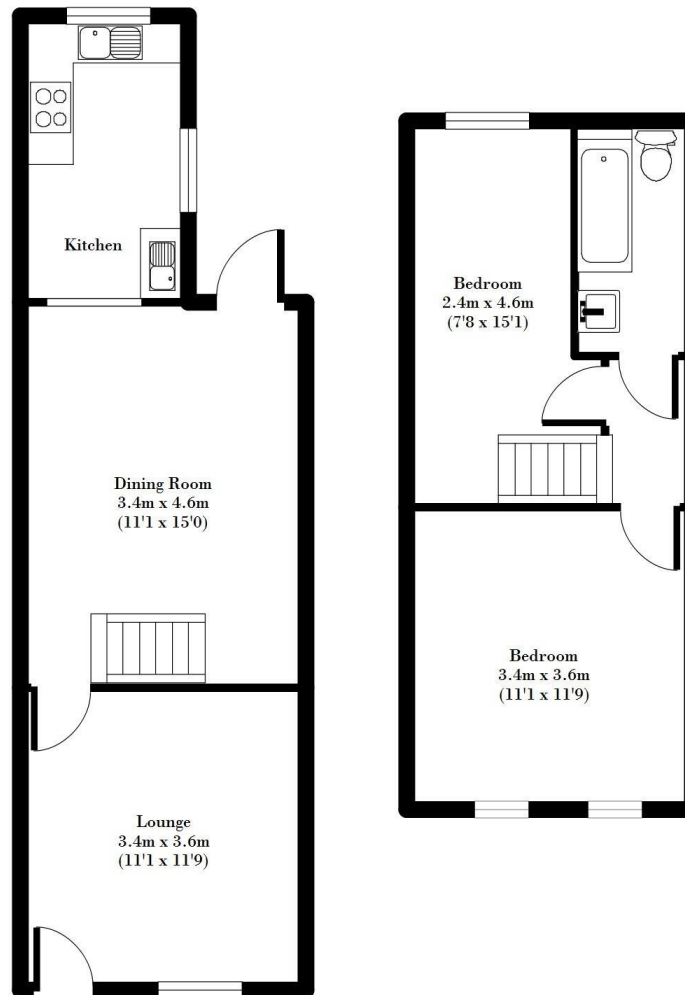
EPC Rating C

- Victorian 2 Bedroom Cottage
- Potential to Loft Convert and Side Extend (Stpp)
- Courtyard Garden
- Wood Flooring Throughout
- 700m from Twickenham Station
- Close to Twickenham Green



Norcott Road TW2 6SR

APPROX GROSS INTERNAL FLOOR AREA: 672 sq. ft / 63 sq. m



**a** Websters Estate Agents 164 Heath Road, Twickenham, Middlesex TW1 4BN

**t** 020 8892 3343

**e** sales@mywebsters.co.uk **w** mywebsters.co.uk

**Disclaimer**

These particulars, whilst believed to be accurate are set out as a general outline only for guidance and do not constitute any part of an offer or contract. Intending purchasers should not rely on them as statements of representation of fact, but must satisfy themselves by inspection or otherwise as to their accuracy. We have not carried out a detailed survey nor tested the services, appliances and specific fittings. Room sizes should not be relied upon for carpets and furnishings. The measurements given are approximate. No person in this firm's employment has the authority to make or give any representation or warranty in respect of the property.



