



Websters
estate agents

Fifth Cross Road, Twickenham, TW2 5LG

Mid Terrace Victorian 2 double bedroom cottage just 50 metres from Waldegrave Girls School/Sixth Form, 0.2 miles from St James Primary, 0.4 miles from Stanley and Archdeacon Primary.

Tastefully presented throughout with original period features, modern fixtures and fittings and light neutral decor. Offering 775 sq ft of well proportioned living space over 2 floors with potential to loft convert (subject to Planning Permission and Building Regulations).

Front door opens into the open plan living/dining room with a door to the conservatory at the side and access into the fitted kitchen. To the rear is a utility area and the family bathroom. Doors from the utility and conservatory open onto the 45ft paved rear garden with gated rear access.

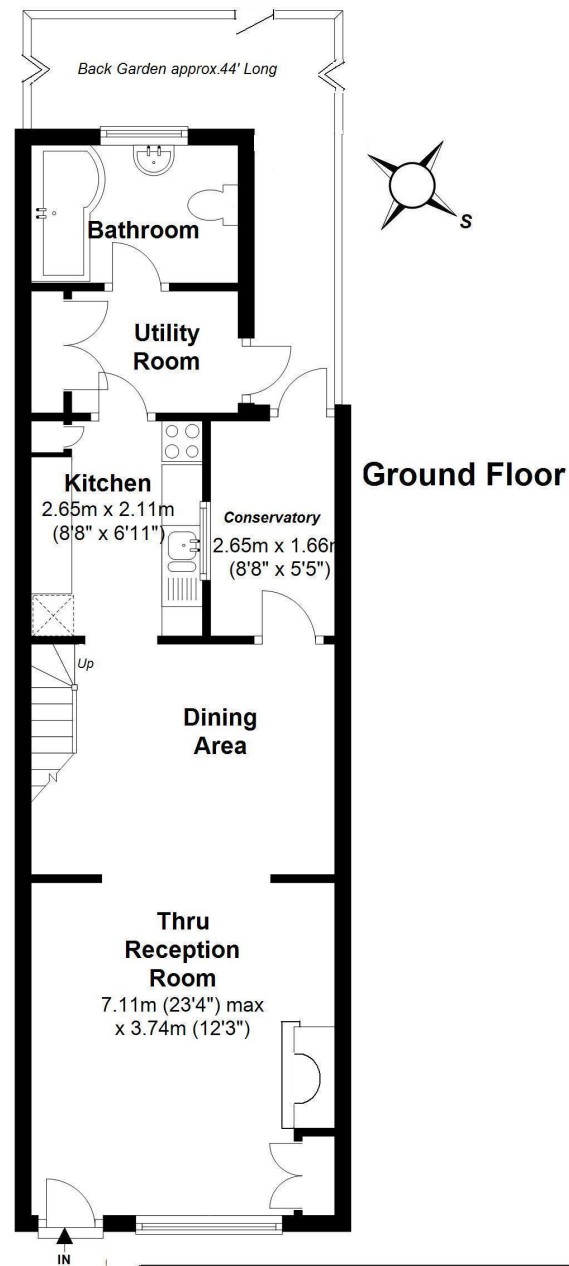
On the first floor are 2 double bedrooms. Wooden steps in the rear bedroom lead upto the loft storage room with flooring, power and velux window.

Unrestricted road parking and located 0.4 miles from Twickenham Green and local shops and only 0.5 miles from Fulwell and Strawberry Hill train stations.

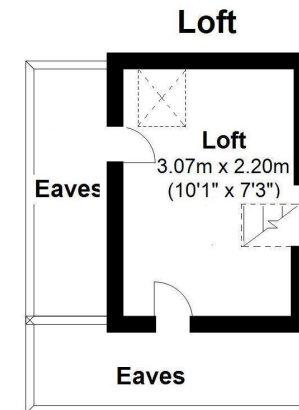
EPC Rating E

- Mid Terrace Victorian Cottage
- 2 Double Bedrooms and Loft Room
- Potential to Loft Convert (stpp)
- Open Plan Living/Dining Room
- Separate Kitchen, Conservatory and Utility Room
- Well Presented Throughout
- 0.5 Miles from Fulwell and Strawberry Hill Stations

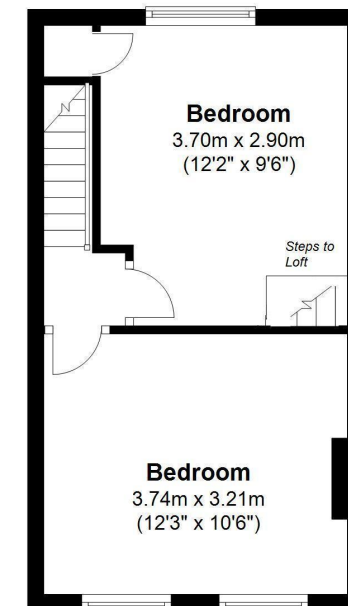




Ground Floor



First Floor



Total Floor Area approx. = 775 Sq. Feet (72sq.metres)
[inclds Conservatory ,excludes Loft 73sq.feet]

a Websters Estate Agents 36 Broad Street, Teddington, Middlesex TW11 8QY

t 020 8614 6000

e sales@mywebsters.co.uk **w** mywebsters.co.uk

Disclaimer

These particulars, whilst believed to be accurate are set out as a general outline only for guidance and do not constitute any part of an offer or contract. Intending purchasers should not rely on them as statements of representation of fact, but must satisfy themselves by inspection or otherwise as to their accuracy. We have not carried out a detailed survey nor tested the services, appliances and specific fittings. Room sizes should not be relied upon for carpets and furnishings. The measurements given are approximate. No person in this firm's employment has the authority to make or give any representation or warranty in respect of the property.

