



Mon-Sat  
8am-6.30pm  
No loading  
Mon-Fri  
8.00-9.30am  
4.30-6.30pm

003

17

Websters  
estate agents



# Staines Road, Twickenham, TW2 5BG

End of Terrace 2 double bedroom Victorian Cottage with a south facing garden less than 0.1 mile from Twickenham Green, local shops, bars and restaurants and just 0.3 miles from Trafalgar and Archdeacon Primary Schools and Kneller Gardens with a cycle/footpath along the river Crane to Crane Park.

With no onward chain and tastefully presented to offer 667 sq ft of living space over 2 floors with a study/playroom/occasional bedroom in the loft, high specification fixtures, fittings and flooring, double glazed windows, under floor heating in the kitchen and bathroom and pleasing neutral decor throughout.

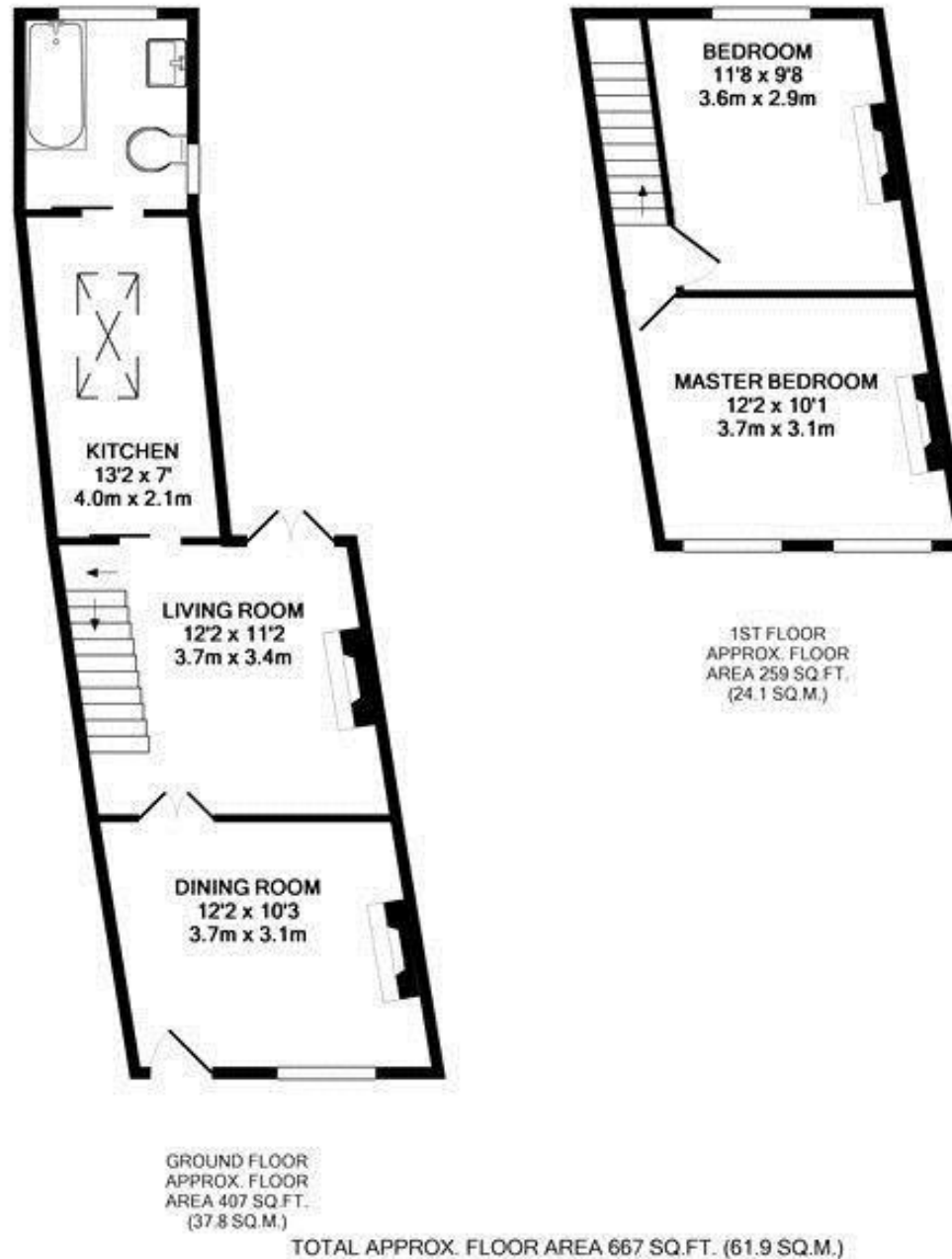
Front door opens to the living room with wood flooring, a feature fireplace and built in storage. Doors lead to the dining room with a wood burning stove, doors onto the garden and access to the fitted kitchen and family bathroom at the rear. On the first floor are 2 double bedrooms with built in wardrobes and hatch access to the stylish converted loft room. This light filled room is suitable as a study, playroom or occasional bedroom with a feature brick wall and velux roof windows.

Located just 0.6 miles from Strawberry Hill village shops and train station and Twickenham town centre and just 0.5 miles from Waldegrave Girls School/Co-ed Sixth Form.

EPC Rating D

- End of Terrace Victorian Cottage
- 2 Double Bedrooms and a Loft Room
- South Facing Garden and No Chain
- 2 Living Rooms and Separate Kitchen
- Tastefully Presented Throughout
- 0.5 Miles from Strawberry Hill Station
- 0.1 Mile from Twickenham Green





[a](#) Websters Estate Agents 164 Heath Road, Twickenham, Middlesex TW1 4BN    [t](#) 020 8892 3343    [e](#) [sales@mywebsters.co.uk](mailto:sales@mywebsters.co.uk)    [w](#) [mywebsters.co.uk](http://mywebsters.co.uk)

**Disclaimer**

These particulars, whilst believed to be accurate are set out as a general outline only for guidance and do not constitute any part of an offer or contract. Intending purchasers should not rely on them as statements of representation of fact, but must satisfy themselves by inspection or otherwise as to their accuracy. We have not carried out a detailed survey nor tested the services, appliances and specific fittings. Room sizes should not be relied upon for carpets and furnishings. The measurements given are approxiamte. No person in this firms employment has the authority to make or give any representation or warranty in respect of the property.



