



11

15

17

Websters
estate agents

Norcutt Road, Twickenham ,TW2 6SR

End of Terrace 2 bedroom Victorian cottage in a popular and quiet cul-de-sac location 0.3 miles from Twickenham Green, local shops and restaurants and 0.8 miles from Strawberry Hill and Twickenham mainline train station.

Tastefully presented throughout with modern fixtures and fittings, period features, part wood flooring and pleasing neutral decor. With vacant possession and no onward chain, this charming property offers 796 sq ft of light and airy living space over 3 floors with a west facing courtyard garden.

Side entrance opens into the living room with a door to the kitchen at the rear. This spacious room has modern fitted units and appliances, wooden flooring and space for a table. A door opens onto the courtyard garden with decking and secure gated access at the rear. On the first floor is a double bedroom and the large family bathroom with stairs leading up to the second bedroom with built in storage.

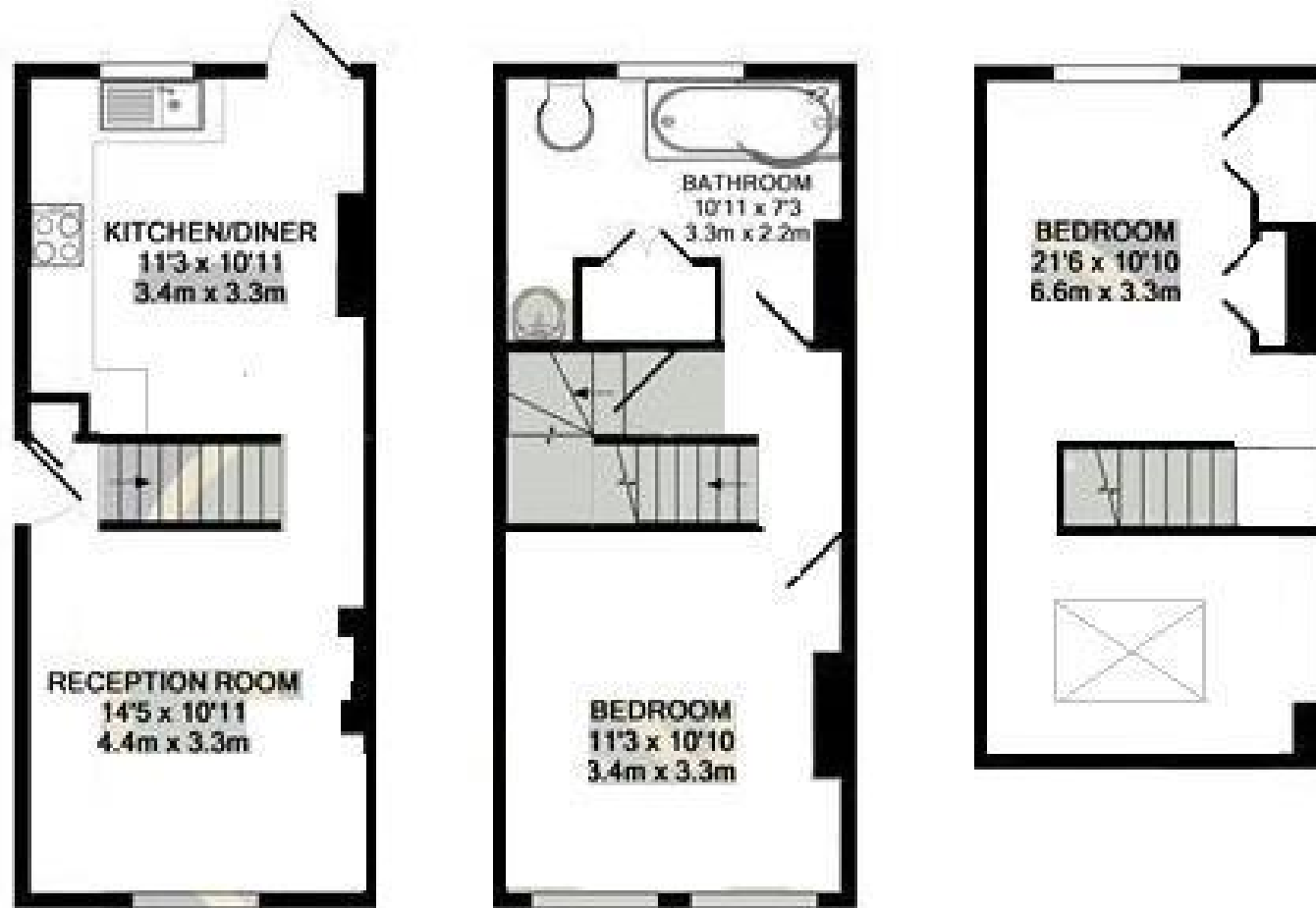
Located 0.3 miles from Archdeacon Primary School and just 0.6 miles from Trafalgar Primary, St Richard Reynolds Primary/Secondary School, numerous private Schools and Nurseries and Twickenham town centre.

EPC Rating D

- End of Terrace Victorian Cottage
- Popular Twickenham Green Location
- 2 Double Bedrooms and Upstairs Bathroom
- West Facing Garden with Rear Access
- Living Room and Separate Kitchen/Breakfast Room
- Vacant Possession and No Chain
- 0.3 Miles from Twickenham Green



13 Norcutt Rd



Disclaimer

These particulars, whilst believed to be accurate are set out as a general outline only for guidance and do not constitute any part of an offer or contract. Intending purchasers should not rely on them as statements of representation of fact, but must satisfy themselves by inspection or otherwise as to their accuracy. We have not carried out a detailed survey nor tested the services, appliances and specific fittings. Room sizes should not be relied upon for carpets and furnishings. The measurements given are approximate. No person in this firm's employment has the authority to make or give any representation or warranty in respect of the property.

