



Websters
estate agents

Cranmer Road, Hampton Hill, TW12 1DW

Semi Detached 3 storey Victorian Home with a garage, driveway parking and a 100ft landscaped garden just 0.5 miles from Hampton Hill High Street, Bushy Park and Carsile Primary School and only 0.3 miles from Hampton Hill Primary School.

Extended to the rear and side by the current owners and refurbished to an impressive standard with high specification fixtures and a blend of modern and traditional decor. Offering 2573 sq ft of adaptable light and airy living space over 3 floors with wood sash windows, high ceilings, period features and original fireplaces.

The tiled entrance hallway leads to the bay fronted living room, an inner hallway to the garage, utility room, a w.c and into the fabulous open plan kitchen/family/dining room at the rear. This stunning room has a fully integrated bespoke fitted kitchen, a dining area, family living and study area, limestone flooring, underfloor heating, a vaulted ceiling and access to the utility room. Feature folding doors open directly onto the 100ft garden with 2 large patio areas, lawn and mature planting.

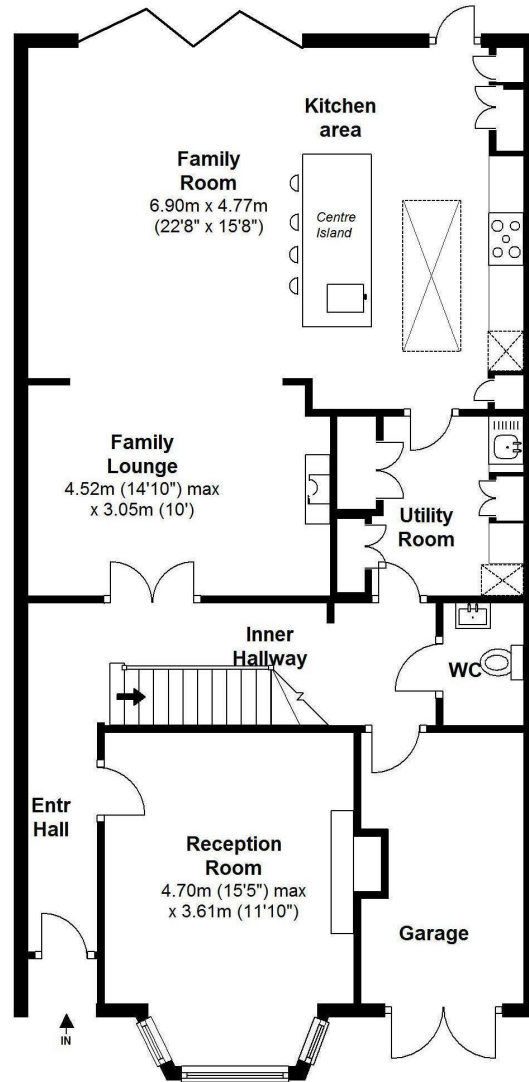
On the first floor are 2 double bedrooms, the master with a luxury en-suite bathroom and a study room/bedroom. The front bedroom is currently being used as a family sitting room. Stairs lead up to the second floor with 4 bedrooms, one with an en-suite shower room and the family shower room.

Located 0.7 miles from Hampton Boys and Lady Eleanor Hollis Schools and 0.8 miles from Fulwell train station and the A316 with direct access to the M3/M25 and into central London. EPC Rating D

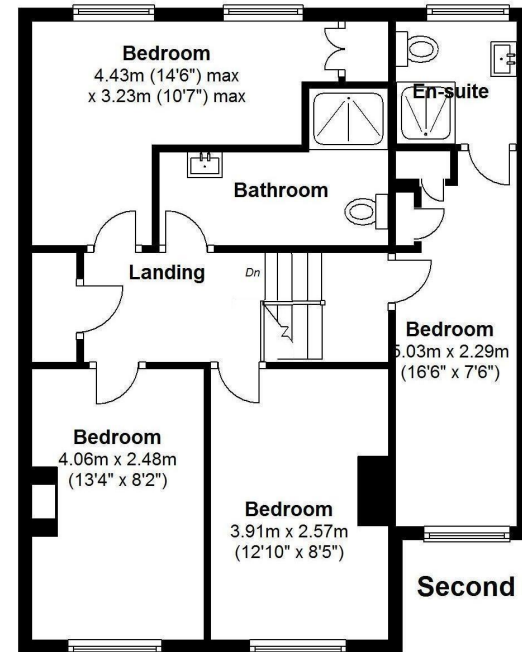
- Three Storey Victorian Family Home
- 6 Bedrooms and a Study Room
- 2573 Sq Ft of Living Space
- Stunning Open Plan Kitchen/Dining/Family Room
- Extended and Refurbished
- 100 Ft Landscaped Rear Garden
- Garage and Driveway Parking for 2 Cars



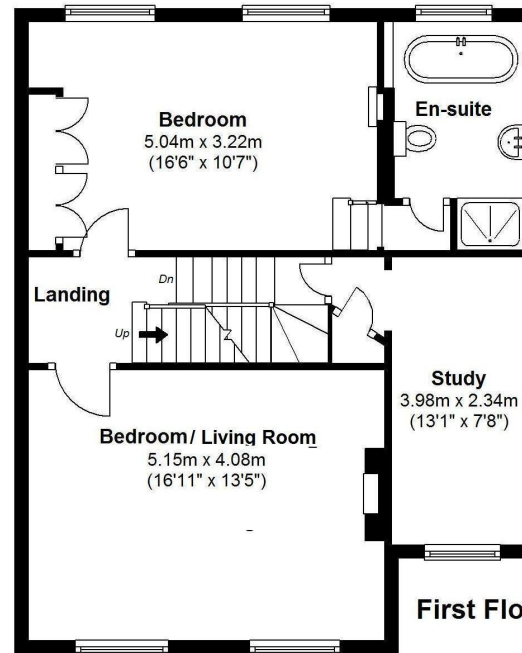
Total Floor Area approx.=2,573 Sq.Feet (239sq.metres)



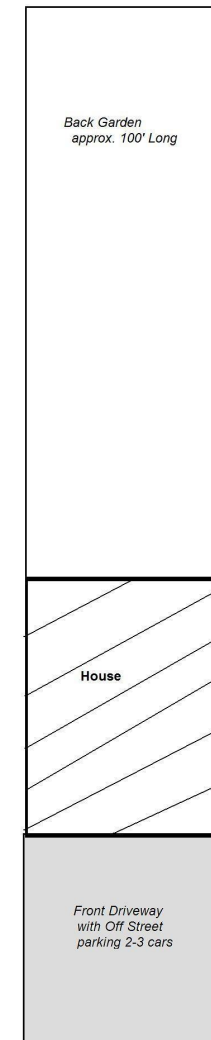
Ground Floor



Second Floor



First Floor



Site Layout
(Not to Scale)

