



Websters
estate agents
01223 332124
www.websters.co.uk
For Sale

126

128

Websters
estate agents

Third Cross Road, Twickenham, TW2 5EA

Ground Floor 1 bedroom maisonette with a private west facing garden and a Share of Freehold. Situated in a highly regarded location 0.2 miles from Twickenham Green, local shops, restaurants and bus stops and only 0.6 miles from Strawberry Hill village and train station.

With no onward chain and tastefully presented to offer 552 sq ft of well proportioned living space with a charming period features, modern fixtures, fittings and floorings, double glazed windows and door and neutral decor throughout.

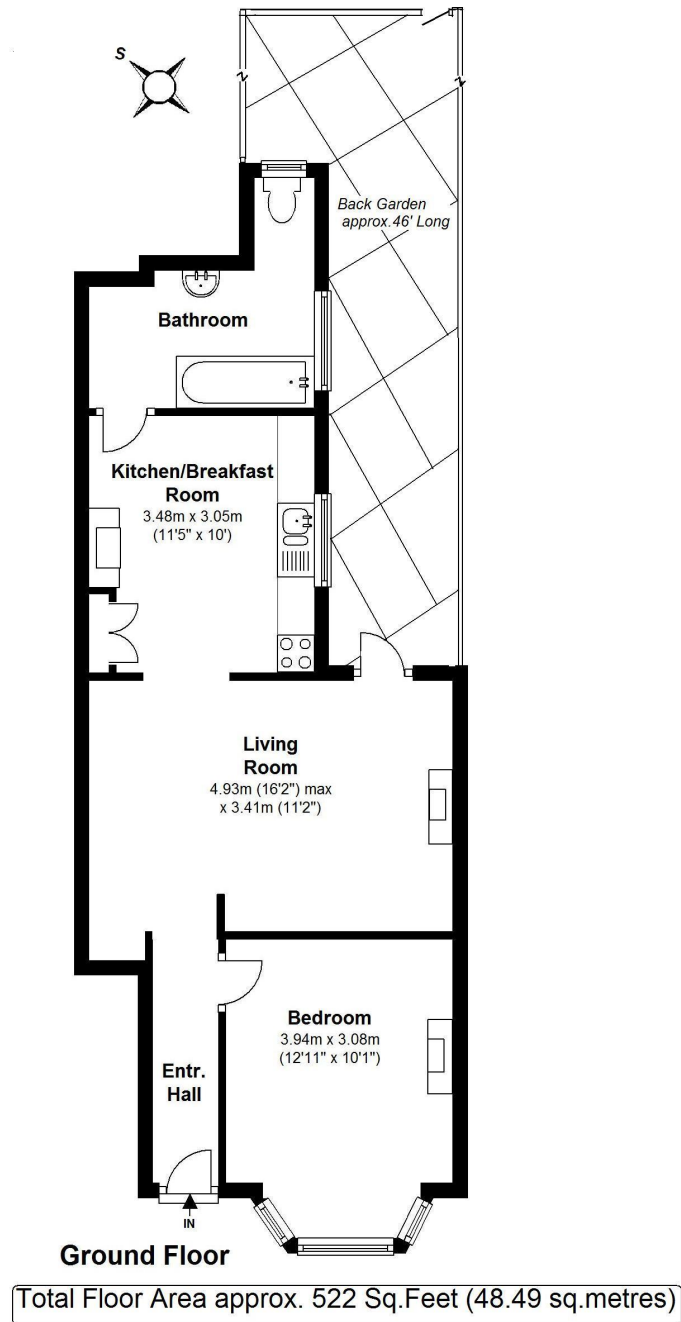
The private front door leads to the hallway with access to the bay fronted double bedroom and the open plan living room with oak flooring, a feature fireplace, high ceilings, space for seating and dining and access to the fitted kitchen and bathroom at the rear. A door in the living room opens onto the low maintenance garden with mature shrubs and rear gated access.

Located less than 1 mile from Twickenham town centre, mainline train station and the A316 with direct access to the M3/M25 and into central London.
EPC Rating D

- Ground Floor One Bedroom Maisonette
- West Facing Private Garden
- Open Plan Living Room/Kitchen
- No Chain and Share of Freehold
- 552 Sq Ft of Living Space
- 0.6 Miles from Strawberry Hill Station
- 0.2 Miles from Twickenham Green



Third Cross Road



a Websters Estate Agents 36 Broad Street, Teddington, Middlesex TW11 8QY

t 020 8614 6000

e sales@mywebsters.co.uk **w** mywebsters.co.uk

Disclaimer

These particulars, whilst believed to be accurate are set out as a general outline only for guidance and do not constitute any part of an offer or contract. Intending purchasers should not rely on them as statements of representation of fact, but must satisfy themselves by inspection or otherwise as to their accuracy. We have not carried out a detailed survey nor tested the services, appliances and specific fittings. Room sizes should not be relied upon for carpets and furnishings. The measurements given are approxiamte. No person in this firms employment has the authority to make or give any representation or warranty in respect of the property.

