



Websters
estate agents

Campbell Road, Twickenham, TW2 5BY

Semi detached 3 bedroom Victorian home in a quiet cul-de-sac location just 0.2 miles from Trafalgar Nursery and Primary School and less than 0.5 miles from Archdeacon Primary and Waldegrave Girls Secondary/Sixth Form.

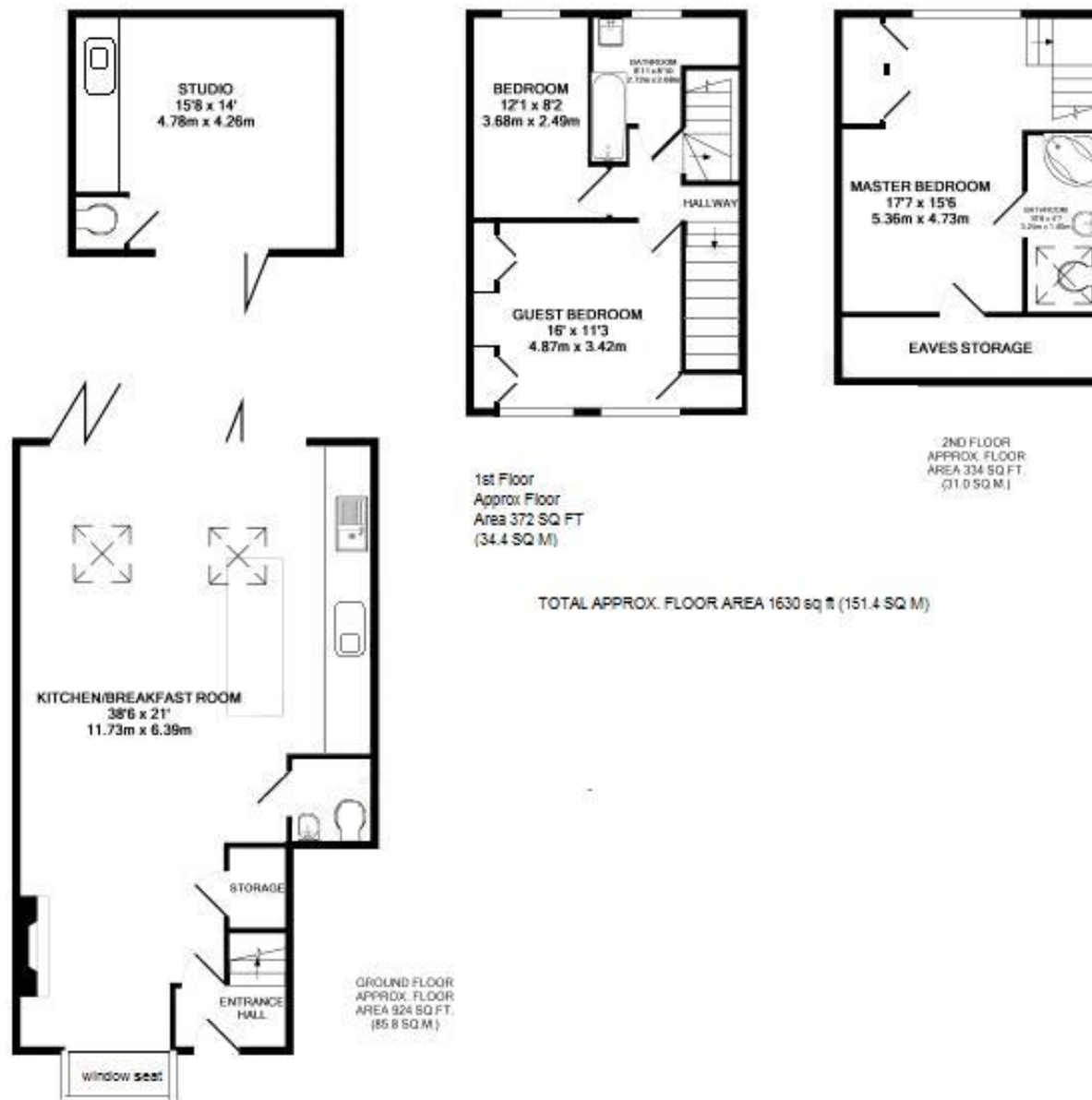
Extended to the rear/side, loft converted and refurbished to an impressive standard, this delightful home offers 1630 sq ft of living space over 3 floors with a separate fully powered home office. Immaculately presented throughout with contemporary high specification fixtures, fittings, flooring and lighting, double glazed windows and doors and plantation shutters.

Entrance hallway leads into the stunning open plan family room with the living area to the front and the fabulous fitted kitchen and dining area to the rear. This stylish room has a feature fireplace, tiled flooring, w.c, storage, granite worktops and velux roof windows. Full width folding doors open onto the south west facing landscaped garden with a large sun deck, lawn and footpath to the home office with a w/c and kitchen area. On the first floor are 2 double bedrooms and the family bathroom with stairs up to the master bedroom with built in storage, en-suite bathroom and eaves storage.

With unrestricted road parking and a walk in storage/bike shed to the front. Located 0.3 miles from Twickenham Green, local shops and restaurants and 0.8 miles from Strawberry Hill Station. EPC Rating D

- Semi Detached Victorian Home
- 3 Double Bedrooms and 2 Bathrooms
- Stunning Family Living Space
- Separate Home Office/Studio
- 1630 Sq Ft of Living Space over 3 Floors
- Quiet Twickenham Cul-de-Sac Location
- South West Facing Garden
- Within 0.5 Miles of Popular Schools





a Websters Estate Agents 164 Heath Road, Twickenham, Middlesex TW1 4BN t 020 8892 3343 e sales@mywebsters.co.uk w mywebsters.co.uk

Disclaimer
 These particulars, whilst believed to be accurate are set out as a general outline only for guidance and do not constitute any part of an offer or contract. Intending purchasers should not rely on them as statements of representation of fact, but must satisfy themselves by inspection or otherwise as to their accuracy. We have not carried out a detailed survey nor tested the services, appliances and specific fittings. Room sizes should not be relied upon for carpets and furnishings. The measurements given are approximate. No person in this firm's employment has the authority to make or give any representation or warranty in respect of the property.

