



Websters
estate agents

Norcutt Road, Twickenham, TW2 6SR

Mid Terrace new build 'Victorian style' cottage in a small development with a private parking space. Situated in a popular and quiet cul-de-sac location 0.3 miles from Twickenham Green, local shops and restaurants and 0.8 miles from Strawberry Hill and Twickenham mainline train station.

NHBC guaranteed, this delightful modern home offers 1084 sq ft of well proportioned living space over 3 floors with high specification fixtures, fittings and floorings, light neutral decor and a pleasing welcoming feel.

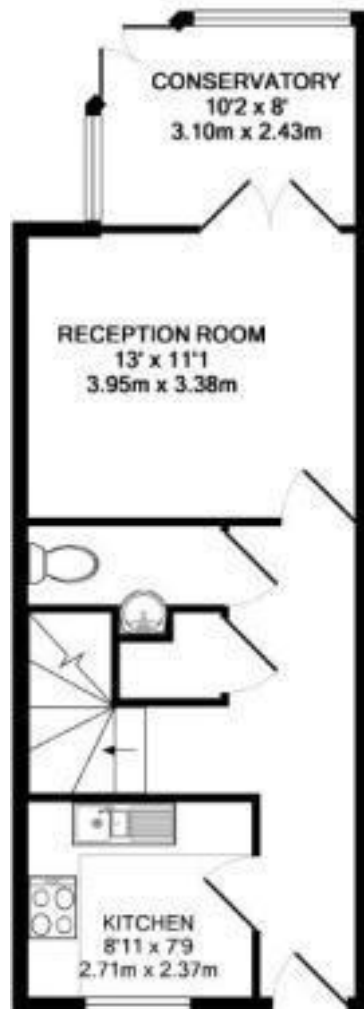
Entrance hallway leads to the fitted kitchen at the front, a w.c, storage and the family living room at the rear. Doors open into the conservatory at the rear with access onto the patio. On the first floor are 2 double bedrooms and the family bathroom with stairs upto the 3rd bedroom with a velux window, built in cupboards and eaves storage.

Located 0.3 miles from Archdeacon Primary School and just 0.6 miles from Trafalgar Primary, St Richard Reynolds Primary/Secondary School, numerous private Schools and Nurseries and Twickenham town centre.

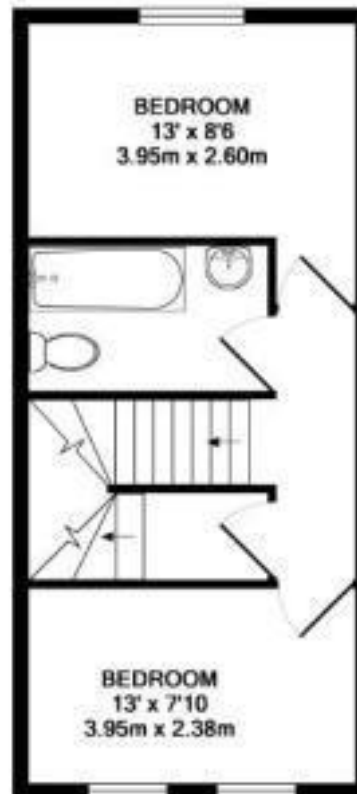
EPC Rating B

- Mid Terrace New Build Home
- 3 Bedrooms and Upstairs Bathroom
- Living Room, Conservatory and Separate Kitchen
- Private Parking Space
- Popular Residential Location
- 1084 Sq Ft of Living Space over 3 Floors
- 0.3 Miles from Twickenham Green
- Close to Popular Borough Schools





GROUND FLOOR
APPROX. FLOOR
AREA 455 SQ. FT.
(42.3 SQ. M.)



1ST FLOOR
APPROX. FLOOR
AREA 380 SQ. FT.
(35.3 SQ. M.)



2ND FLOOR
APPROX. FLOOR
AREA 249 SQ. FT.
(23.1 SQ. M.)

NORCUTT MEWS, TW2
TOTAL APPROX. FLOOR AREA 1084 SQ. FT. (100.7 SQ. M.)

All measurements taken to RICS Guidelines for Domestic Areas. Whilst every attempt has been made to ensure the accuracy of the floor plan contained herein, all measurements are approximate and no responsibility is taken for any error, omission or misstatement. This plan is for illustrative purposes only and should be used as such by any prospective purchaser. The services, systems and appliances shown have not been tested and no guarantee as to their operability or efficiency can be given.

Issue with Mapbox ©2013

Disclaimer

These particulars, whilst believed to be accurate are set out as a general outline only for guidance and do not constitute any part of an offer or contract. Intending purchasers should not rely on them as statements of representation of fact, but must satisfy themselves by inspection or otherwise as to their accuracy. We have not carried out a detailed survey nor tested the services, appliances and specific fittings. Room sizes should not be relied upon for carpets and furnishings. The measurements given are approximate. No person in this firm's employment has the authority to make or give any representation or warranty in respect of the property.

