



Websters  
estate agents



# Woffington Close, Hampton Wick, KT1 4EF

Purpose built maisonette on the ground and first floor of a well maintained development with 2 residents parking spaces, an external storage cupboard and lovely communal gardens. Situated just 0.4 miles from Bushy Park and only 0.2 miles from Hampton Wick station and local shops.

This lovely spacious property offers 839sq ft of adaptable, light and airy living space over 2 floors with modern fittings, neutral decor, storage, large double glazed windows and delightful garden views.

External private front door opens into the hallway with access to the kitchen/breakfast room, storage cupboards and the living room with a pleasing garden aspect. Stairs lead up to the 2 double bedrooms and the family bathroom.

Located just 0.6 miles from Kingston town centre and the River Thames with delightful towpath walks to Hampton Court Palace and Richmond upon Thames.

EPC Rating E

- Purpose Built Duplex Maisonette
- Private Ground Floor Front Door
- 2 Bedrooms and Bathroom Upstairs
- Spacious Living Room and Separate Kitchen
- 839 Sq Ft of Living Space
- Well Maintained Communal Grounds
- 0.2 Miles from Hampton Wick Station

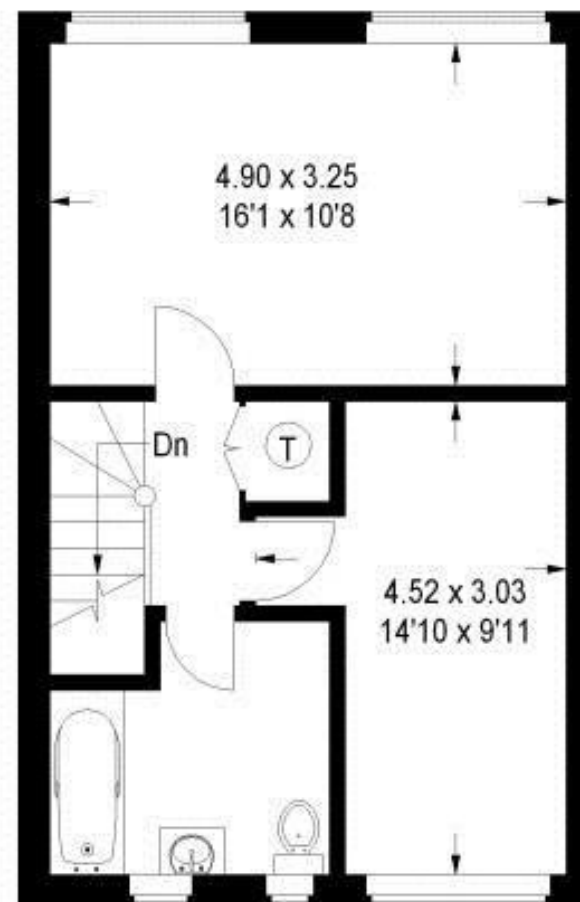


# Woffington Close, Teddington

Approximate Gross Internal Area = 78 sq m / 839 sq ft



**Ground Floor**



**First Floor**

**a** Websters Estate Agents 36 Broad Street, Teddington, Middlesex TW11 8QY

**t** 020 8614 6000

**e** sales@mywebsters.co.uk **w** mywebsters.co.uk

**Disclaimer**

These particulars, whilst believed to be accurate are set out as a general outline only for guidance and do not constitute any part of an offer or contract. Intending purchasers should not rely on them as statements of representation of fact, but must satisfy themselves by inspection or otherwise as to their accuracy. We have not carried out a detailed survey nor tested the services, appliances and specific fittings. Room sizes should not be relied upon for carpets and furnishings. The measurements given are approximate. No person in this firm's employment has the authority to make or give any representation or warranty in respect of the property.



