



Websters
estate agents

May Road, Twickenham, TW2 6RL

Viewings by appointment from Monday 24th August.

Mid terrace 4 bedroom Victorian home in a popular residential location just 0.2 miles from Twickenham Green, local shops and restaurants and less than 0.4 miles from Trafalgar and Archdeacon Cambridge Primary schools.

Extended, loft converted and refurbished to an impressive standard to provide 1150 sq ft of contemporary family living space over 3 floors with high specification fixtures, fittings and flooring and charming original period features.

Entrance hallway leads into the spacious open plan living/dining room with a door to the stunning designer styled fully integrated kitchen at the rear. With velux roof windows and folding doors opening directly onto the south west facing garden.

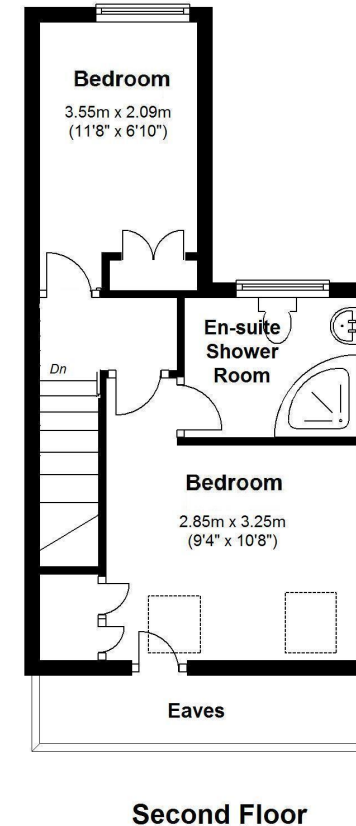
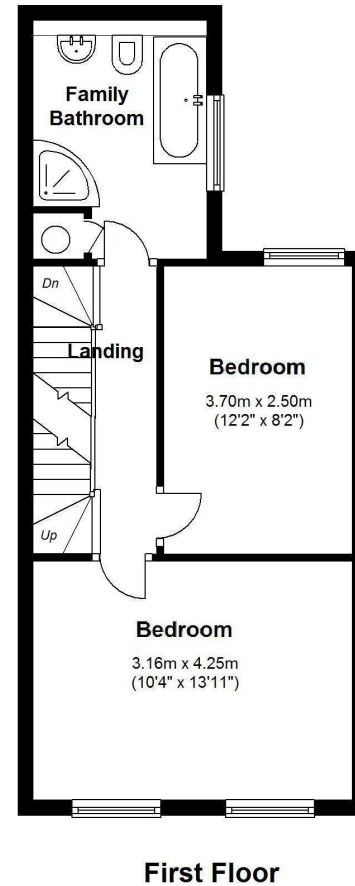
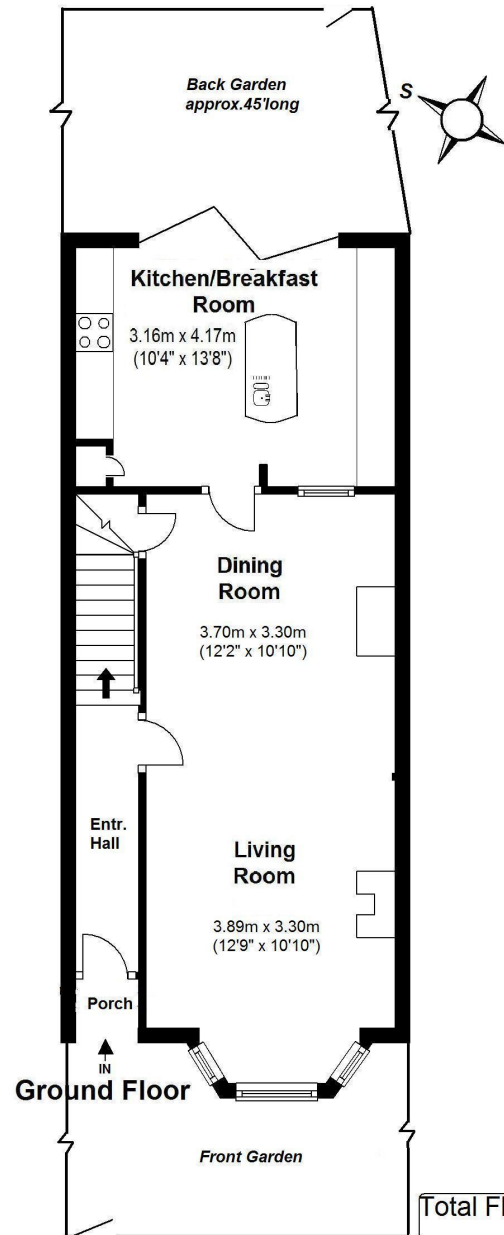
On the first floor are 2 bedrooms and the luxury family bathroom with stairs up to 2 further bedrooms an en-suite shower room and eaves storage

Unrestricted road parking and located less than 1 mile from Strawberry Hill and Twickenham mainline train stations and only 0.8 miles from highly regarded Waldegrave Girls School/Sixth Form. EPC Rating D

- Mid Terrace 4 Bedroom House
- Extended and Loft Converted
- Luxury Fitted Kitchen with Doors onto Garden
- Period Features and Contemporary Style
- Luxury Bathroom and En-Suite Shower Room
- South West Facing 50ft Garden
- Open Plan Family Living Room
- 0.8 Miles from Waldegrave Girls School
- Popular Twickenham Green Location



May Road, Twickenham



Total Floor Area approx. = 1,150 Sq. Feet (106.87sq.metres)

Copyright epcertificate.com

a Websters Estate Agents 164 Heath Road, Twickenham, Middlesex TW1 4BN

t 020 8892 3343

e sales@mywebsters.co.uk w mywebsters.co.uk

Disclaimer

These particulars, whilst believed to be accurate are set out as a general outline only for guidance and do not constitute any part of an offer or contract. Intending purchasers should not rely on them as statements of representation of fact, but must satisfy themselves by inspection or otherwise as to their accuracy. We have not carried out a detailed survey nor tested the services, appliances and specific fittings. Room sizes should not be relied upon for carpets and furnishings. The measurements given are approximate. No person in this firm's employment has the authority to make or give any representation or warranty in respect of the property.

