



Websters  
estate agents  
0203 8892 3343  
www.websters.co.uk  
To Let

Websters  
estate agents



# Riverview Gardens, Strawberry Hill, TW1 4RT

Semi detached modern build 4 bedroom family home in a desirable residential location 0.3 miles from Strawberry Hill Village and Station, only 50 metres from Radnor Gardens and the River Thames and 0.8 miles from Twickenham mainline train station.

With no onward chain and tastefully presented to offer 1390sq ft of spacious, well proportioned living space over 3 floors with high specification fixtures, fittings and floorings, energy efficient lighting, heating and appliances, double glazed windows and doors and tasteful neutral decor throughout.

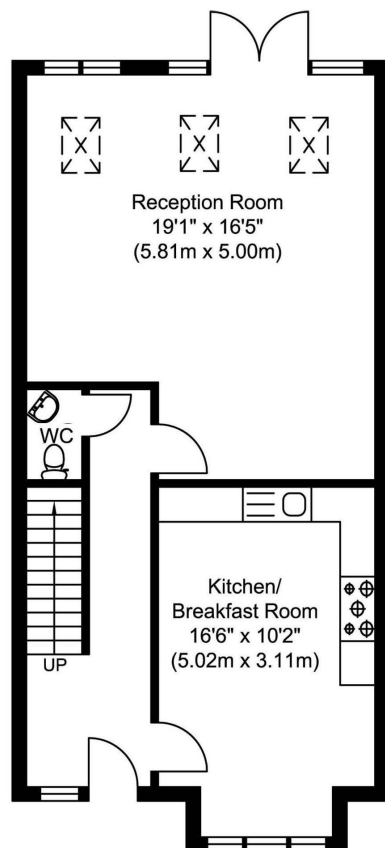
Entrance hallway leads to the fully integrated kitchen/breakfast room, a w.c and the living/family room at the rear. Doors open onto the garden with patio, lawn, shed storage and side access. On the first floor are three bedrooms and the family bathroom with stairs up to the master bedroom with an en-suite shower room and eaves storage.

Located 0.5 miles from Twickenham town centre and Archdeacon Primary and less than 0.8 miles from Trafalgar, St James Primary, Waldegrave Girls/Co-ed Sixth Form and Orleans Park Primary/ Secondary Schools.

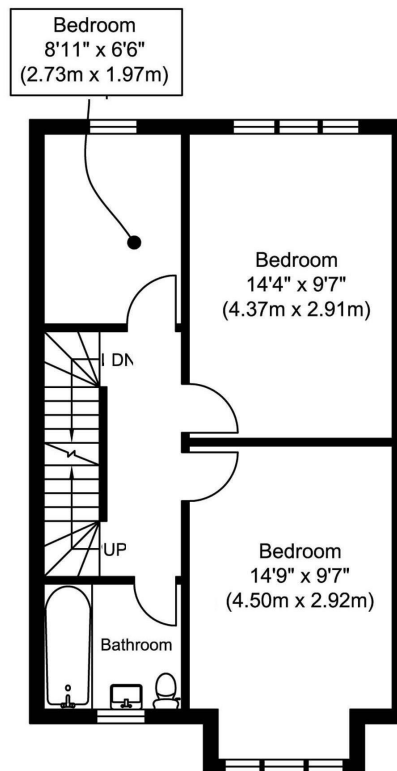
EPC Rating C

- Semi Detached Recent Build Home
- 4 Bedrooms and 2 Bathrooms
- Spacious Family/Living Room and Seperate Kitchen
- High Specification Throughout
- Vacant Possession and No Chain
- 1390 Sq Ft Living Space over 3 Floors
- 0.3 Miles from Strawberry Hill Station
- 50 Metres from Radnor Gardens and the River Thames

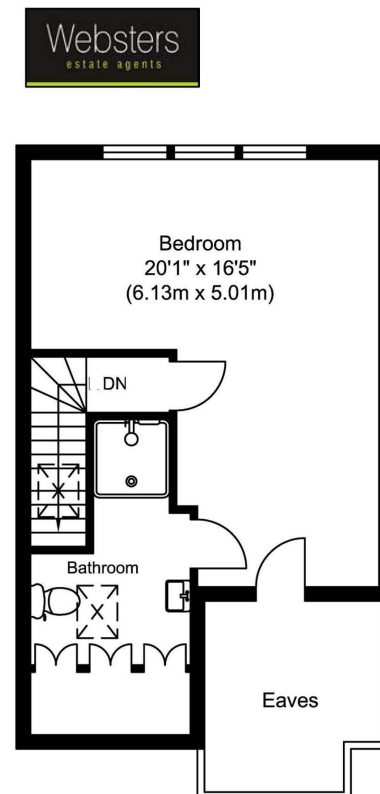




Ground Floor  
Approximate Floor Area  
554 sq. ft.  
(51.4 sq.m)



First Floor  
Approximate Floor Area  
462 sq. ft.  
(43.0 sq.m)



Second Floor  
Approximate Floor Area  
374.0 sq. ft.  
(34.8 sq.m)

Total Gross Internal Area  
1390 sq. ft.  
(129.2 sq. m)

Whilst every attempt has been made to ensure the accuracy of the floor plan contained here, measurements of doors, windows, rooms and any other items are approximate and no responsibility is taken for any error, omission, or misstatement. This plan is for illustrative purposes only and should be used as such by any prospective purchaser. The services, systems and appliances shown have not been tested and no guarantee as to their operability or efficiency can be given.

**Disclaimer**

These particulars, whilst believed to be accurate are set out as a general outline only for guidance and do not constitute any part of an offer or contract. Intending purchasers should not rely on them as statements of representation of fact, but must satisfy themselves by inspection or otherwise as to their accuracy. We have not carried out a detailed survey nor tested the services, appliances and specific fittings. Room sizes should not be relied upon for carpets and furnishings. The measurements given are approximate. No person in this firm's employment has the authority to make or give any representation or warranty in respect of the property.



