



Websters  
estate agents



# 30 Belmont Road, Twickenham, TW2 5DA

Viewings from Saturday 27th June

Ground Floor 2 bedroom apartment in a brand new development of 8 luxury apartments in a stunning period property in a quiet residential cul-de-sac 0.4 miles from Twickenham Green, local shops, bars and restaurants and only 0.1 mile from closest bus stop with excellent transport links towards Heathrow and London.

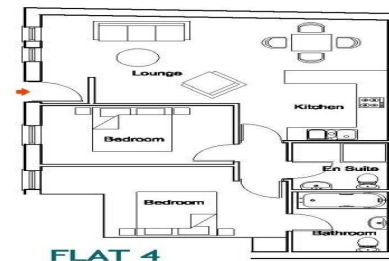
Private front door access from the courtyard at the rear of the property leads into this superb 700 sq ft property with large open plan kitchen/living area leading to a lobby area with doors to 2 bedrooms and 2 bathrooms (one en-suite)  
Currently unfinished with the option to choose kitchen unit/appliance layout (from the units provided)

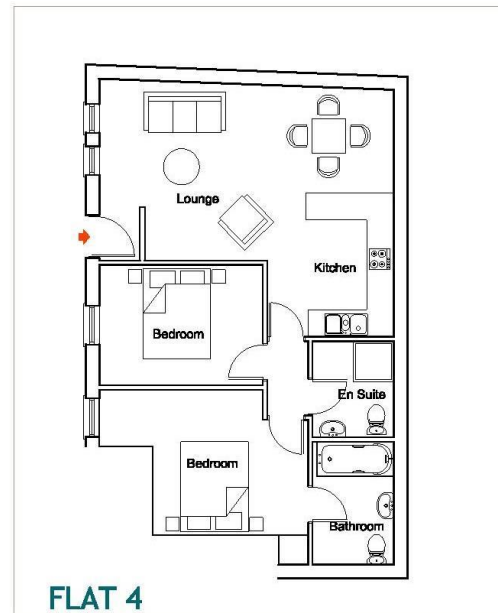
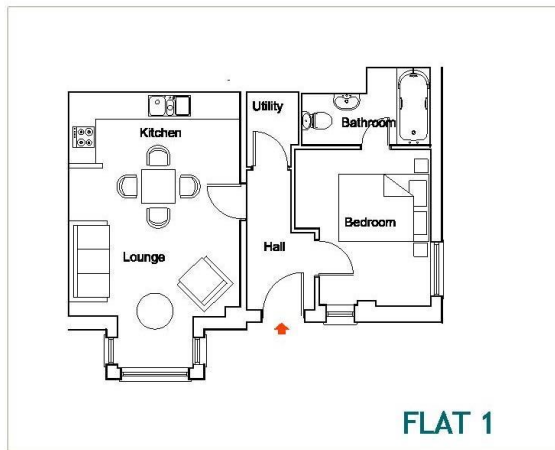
Service building to the rear provides for bike and refuse/recycling storage for the apartments and there is a shared courtyard garden area to the rear of the building.

Final finish options are available (selection to be confirmed)

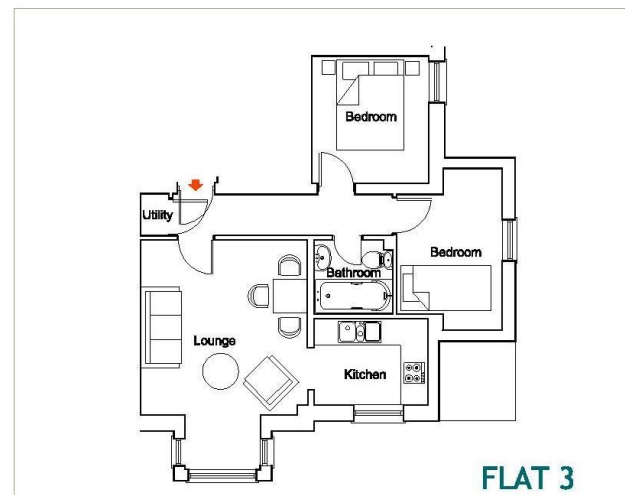
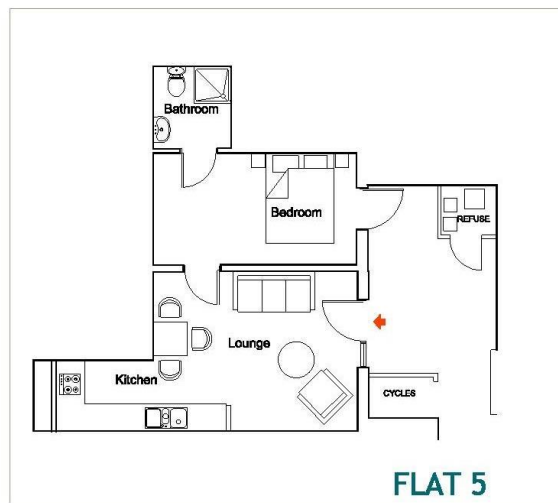
Located 0.8 miles from Strawberry Hill train station and the A316 with direct links into London and the M3

- Ground Floor 2 Bedroom Apartment
- Stunning Period Conversion Property
- 700 Sq Ft of Living Space
- Private Entrance from Rear Courtyard
- Final Finish Options Available
- Residential Twickenham Location





FLAT	FLOOR	m2	ft²
1	ground	42	452
2		74	800
	ground	25	270
	first	25	270
	second	24	260
3	ground	42	452
4	ground	65	700
5	ground	35	377
6	first	46	495
7	first	62	667
8	area	100	1076
	first	4	43
	second	96	1033



**Belmont House**  
**Belmont Road**  
**Twickenham**  
**TW1 5DA**

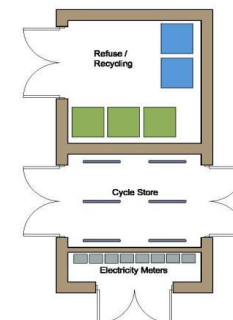
**GROUND FLOOR FLATS**

**a** Websters Estate Agents 164 Heath Road, Twickenham, Middlesex TW1 4BN **t** 020 8892 3343 **e** sales@mywebsters.co.uk **w** mywebsters.co.uk

**Disclaimer**  
 These particulars, whilst believed to be accurate are set out as a general outline only for guidance and do not constitute any part of an offer or contract. Intending purchasers should not rely on them as statements of representation of fact, but must satisfy themselves by inspection or otherwise as to their accuracy. We have not carried out a detailed survey nor tested the services, appliances and specific fittings. Room sizes should not be relied upon for carpets and furnishings. The measurements given are approximate. No person in this firm's employment has the authority to make or give any representation or warranty in respect of the property.



Belmont House  
Belmont Road  
Twickenham  
TW2 5DA



Belmont House  
Belmont Road  
Twickenham  
TW2 5DA