



Websters
estate agents

Gould Road, Twickenham, TW2 6RS

Viewings by appointment from Saturday 13th June

Mid terrace 3 double bedroom home in a popular Twickenham road just 0.2 miles from Twickenham Green and only 0.5 miles from the highly acclaimed Trafalgar and Archdeacon Primary Schools.

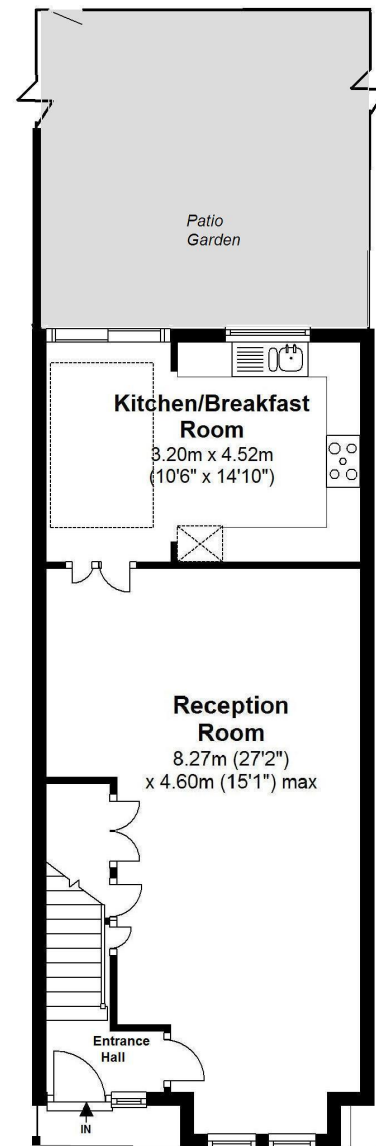
Extended to the rear and loft converted to provide 1210 sq ft of well planned family living space over 3 floors. This lovely home is tastefully presented with light neutral decor, high quality fixtures, fittings and floorings and a charming period feel.

Entrance hallway leads into the bay fronted open plan living room with wooden flooring, fitted units, room for a dining area and access into the kitchen/breakfast room at the rear with a stone tiled floor, modern fitted units and part glass roof. Doors open directly onto the delightful west facing paved garden with established planting and rear gated access. On the first floor are 2 double bedrooms, one with storage and the luxury 4 piece family bathroom with stairs leading up to the spacious master bedroom with an en-suite shower room and eaves storage.

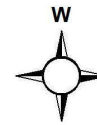
With unrestricted road parking and located 0.8 miles from Twickenham mainline and Strawberry Hill train stations.
EPC Rating D

- Mid Terrace Victorian House
- 3 Double Bedrooms and 2 Bathrooms
- Extended and Loft Converted to 1210 Sq Ft
- Popular Twickenham Green Location
- West Facing Patio Garden
- Open Plan Living/Dining Room and Kitchen/Breakfast Room
- 0.5 Miles from Archdeacon and Trafalgar Primary Schools

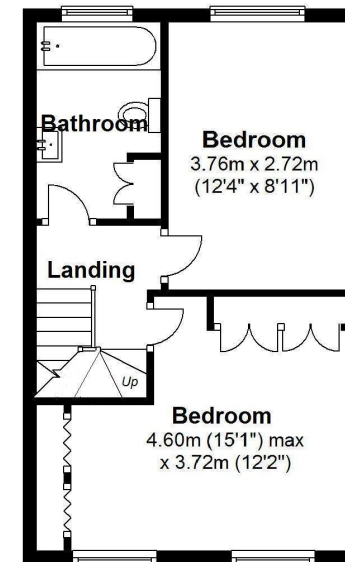
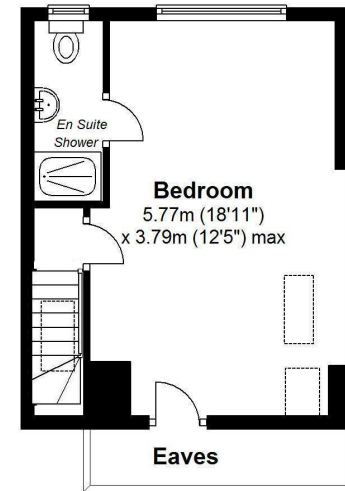




Ground Floor



Second Floor



First Floor

Total Floor Area approx.= 1,210 Sq.Feet (112.43 sq.metres)

Copyright epcertificate.com

