



Websters
estate agents

Elmfield Avenue, Teddington, TW11 8BU

Stunning modern build 4 bedroom semi detached family home in a central Teddington location just 0.2 miles from Teddington Station and only 0.5 miles from Bushy Park.

Fabulous architect designed contemporary home with driveway parking and a landscaped west facing garden with side access, storage and a home office/play room. Incorporating a lightwell, large double glazed windows and doors, high specification fixtures, fittings and flooring, luxury bathrooms, stylish integrated kitchen and underfloor heating throughout to produce 2077sq ft of stylish family living space over 4 floors.

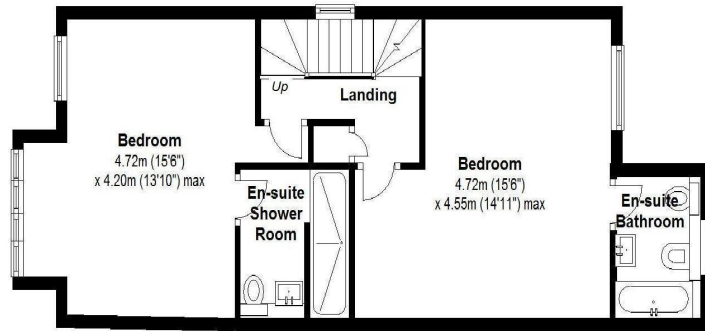
Main entrance hallway features an impressive lightwell with views down to the lower level dining room and a door to the reception hall/study area with a w.c and doors into the living room. This delightful room has 2 sets of doors overlooking the lower decked area, with one set leading via an enclosed walkway to the west facing lawned garden. Downstairs is the superb open plan dining room and fully integrated kitchen/family room. Doors lead to the utility room and onto the sun deck with storage and steps up to the lovely garden, with a path to the fully powered 'log cabin' style home office/playroom. On the first floor are 2 double bedrooms both with luxury en-suite facilities. On the second floor is the family bathroom and 2 double bedrooms, both with eaves storage and one with a mezzanine level platform accessed by a fixed steps.

Located within 0.6 miles of the most popular Primary schools in Richmond Borough and only 0.5 miles from Teddington Lock, the River Thames and towpath walks to Hampton Court and Richmond. EPC Rating C

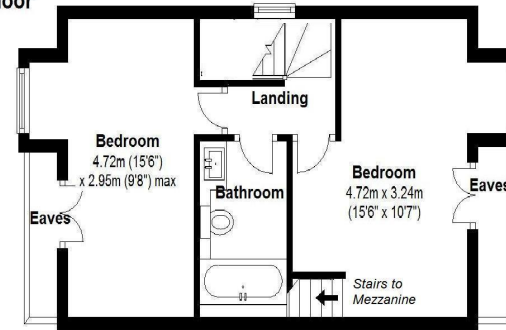
- Contemporary Semi Detached Family Home
- 4 Bedrooms and 3 Bathrooms
- 2077 Sq Ft of Fabulous Living Space
- Driveway Parking and West Facing Garden
- High Specification Fixtures and Fittings
- Stunning Kitchen/Family/Dining Room
- 0.2 Miles from Teddington Station



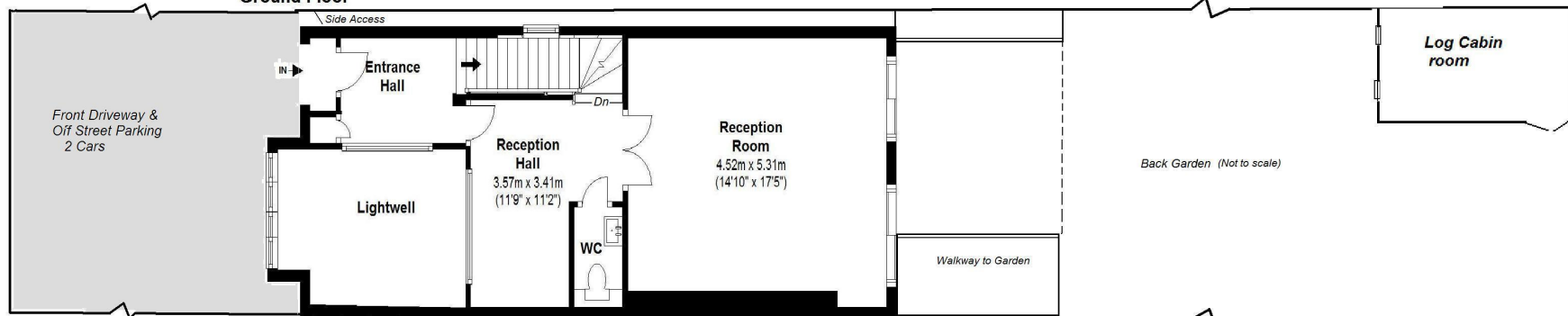
First Floor



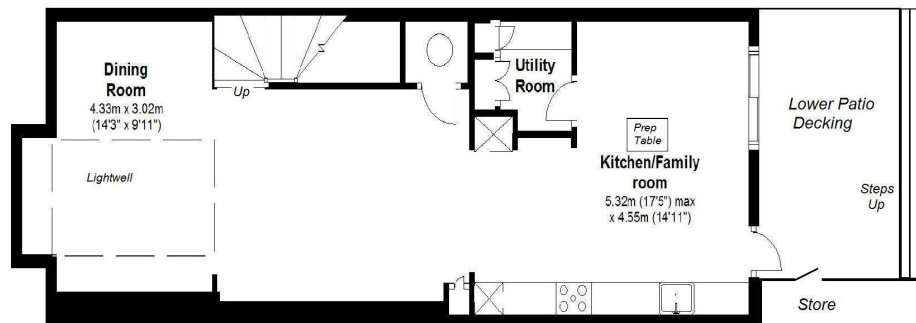
Second Floor



Ground Floor



Basement Floor



Total Floor Area approx.= 2,077 Sq.Feet (192.96sq.metres)

Copyright epcertificate.com

a Websters Estate Agents 164 Heath Road, Twickenham, Middlesex TW1 4BN **t** 020 8892 3343 **e** sales@mywebsters.co.uk **w** mywebsters.co.uk

Disclaimer

These particulars, whilst believed to be accurate are set out as a general outline only for guidance and do not constitute any part of an offer or contract. Intending purchasers should not rely on them as statements of representation of fact, but must satisfy themselves by inspection or otherwise as to their accuracy. We have not carried out a detailed survey nor tested the services, appliances and specific fittings. Room sizes should not be relied upon for carpets and furnishings. The measurements given are approximate. No person in this firm's employment has the authority to make or give any representation or warranty in respect of the property.

