



Websters
estate agents

Warwick Road, Twickenham, TW2 6SW

Attractive mid terrace, 2 double bedroom Victorian Cottage on a highly regarded road only 0.2 miles from Twickenham Green, shops and restaurants.

Tastefully presented throughout with modern high specification fittings but retaining period charm and character. Extended on the ground floor, this lovely welcoming home offers 782 sq ft of living space with light neutral décor.

Entrance hallway leads into the open plan living/dining room with solid wood flooring, feature fireplace, open staircase and double doors onto the garden. A door opens into the extended kitchen at the rear, complete with fully fitted units, slate flooring and a further door onto the courtyard garden.

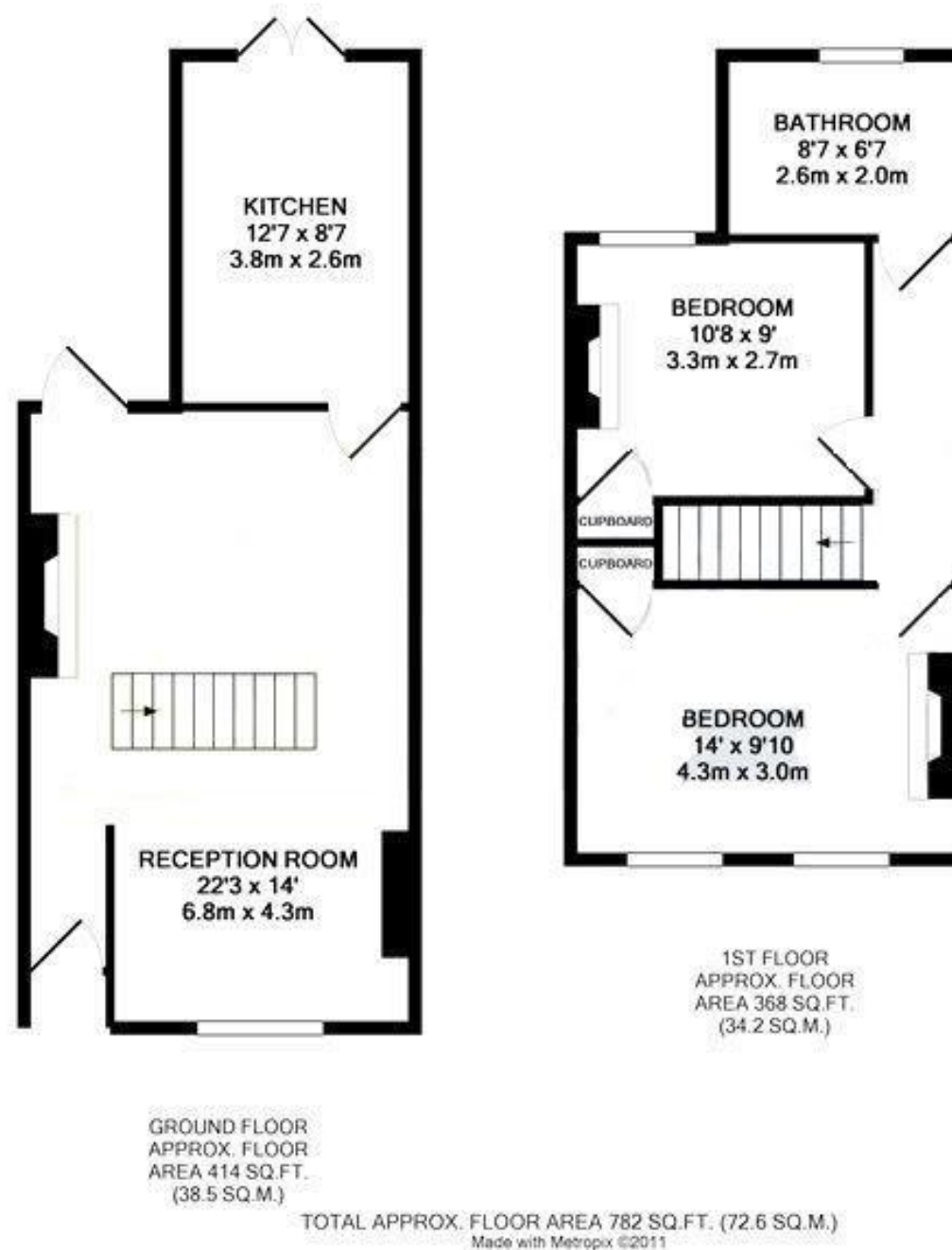
Upstairs are 2 double bedrooms and the luxury period style family bathroom.

With unrestricted parking on the road and just 0.6 miles from Twickenham mainline and Strawberry Hill stations.

EPC Rating E

- Mid Terrace Victorian Cottage
- 200 Metres from Twickenham Green
- Open Plan Living/Dining Area
- Extended Fully Fitted Kitchen
- Impressive Courtyard Garden
- 2 Double Bedrooms
- Upstairs Period Style Luxury Bathroom
- 0.6 Miles from Twickenham Mainline Station





a Websters Estate Agents 36 Broad Street, Teddington, Middlesex TW11 8QY

t 020 8614 6000

e sales@mywebsters.co.uk w mywebsters.co.uk

Disclaimer

These particulars, whilst believed to be accurate are set out as a general outline only for guidance and do not constitute any part of an offer or contract. Intending purchasers should not rely on them as statements of representation of fact, but must satisfy themselves by inspection or otherwise as to their accuracy. We have not carried out a detailed survey nor tested the services, appliances and specific fittings. Room sizes should not be relied upon for carpets and furnishings. The measurements given are approximate. No person in this firm's employment has the authority to make or give any representation or warranty in respect of the property.

