



Websters
estate agents

22 Radnor Gardens, Strawberry Hill, TW1 4NA

Pretty Victorian red brick 2 bedroom cottage in popular and hugely desirable Strawberry Hill.

A tastefully presented home retaining period features, charm and character.

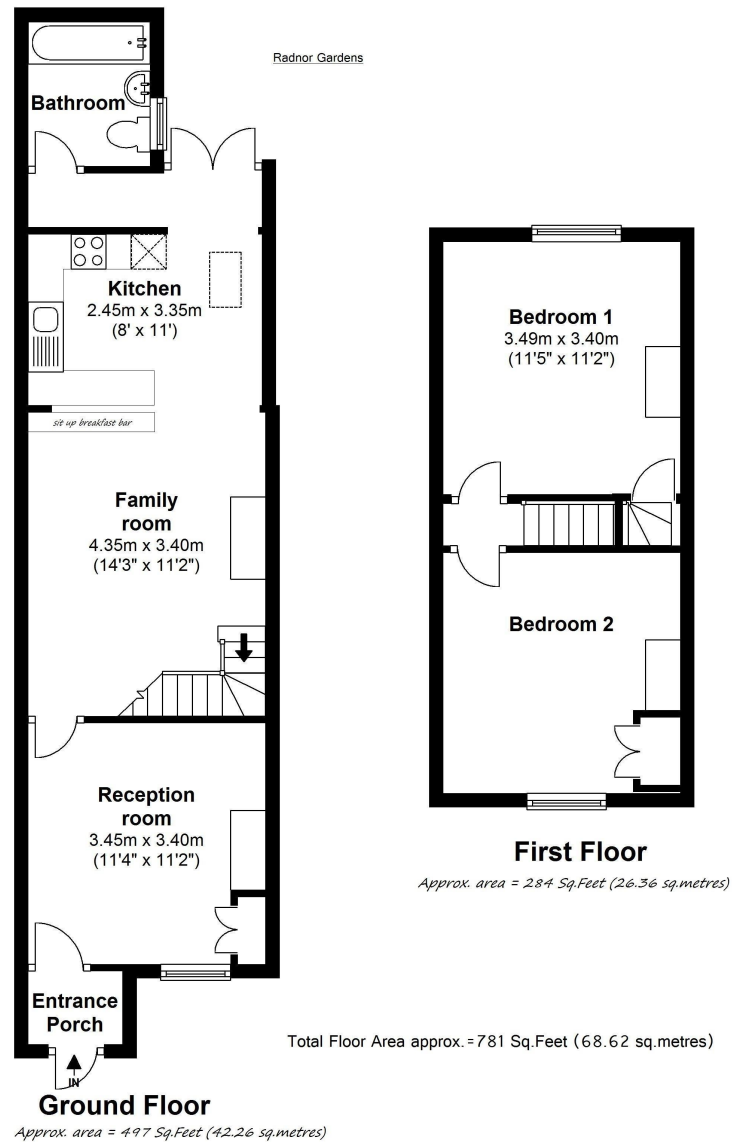
Entrance porch leads to the lovely front reception room. The rear family/dining room is open plan with the modern fully fitted kitchen and bathroom at the rear. Double doors from the kitchen open directly onto the mature, well kept 50 ft patio and garden with a block built storage shed with power, lighting and rear pedestrian access.

Upstairs, the 2 double bedrooms are light, bright and airy with the potential to loft convert and create extra living/bedroom 3 (subject to planning consents).

Radnor Gardens is 0.7 miles from Twickenham mainline station, 0.5 miles from Strawberry Hill station and is idyllically located for Twickenham shops, restaurants and excellent schools.

- Victorian Cottage
- 2 Double Bedrooms
- Modern Open Plan Kitchen/Family Room
- White Bathroom Suite
- Mature 50ft + Garden
- Less than 0.7 Miles from Twickenham Mainline Station
- Potential to Loft Convert (stpp)





a Websters Estate Agents 36 Broad Street, Teddington, Middlesex TW11 8QY

t 020 8614 6000

e sales@mywebsters.co.uk **w** mywebsters.co.uk

Disclaimer

These particulars, whilst believed to be accurate are set out as a general outline only for guidance and do not constitute any part of an offer or contract. Intending purchasers should not rely on them as statements of representation of fact, but must satisfy themselves by inspection or otherwise as to their accuracy. We have not carried out a detailed survey nor tested the services, appliances and specific fittings. Room sizes should not be relied upon for carpets and furnishings. The measurements given are approximate. No person in this firm's employment has the authority to make or give any representation or warranty in respect of the property.

